



HEALTH & FITNESS BUSINESSES REOPENING GUIDELINES

1

In Phase III only
1:1 personal
training and
outdoor classes
of 10 or less



2

Face coverings
AND maintain
distance 6ft



3

Sanitize equipment
& exercising areas
before & after
each use



4

Ancillary
accommodations
(e.g., saunas,
hot tubs, pools)
are closed



5

Only touchless water
bottler refilling stations
or single use water
bottles; other fountains
must be turned off/
blocked



6

Sanitization
of common
areas



7

Outdoor Fitness
classes limited to
maximum of
10 participants



8

Reservations
only, no walk-ins
permitted





MANUFACTURING REOPENING GUIDELINES

1

Face coverings
AND maintain 6ft
distance



2

Frequent hand
washing required



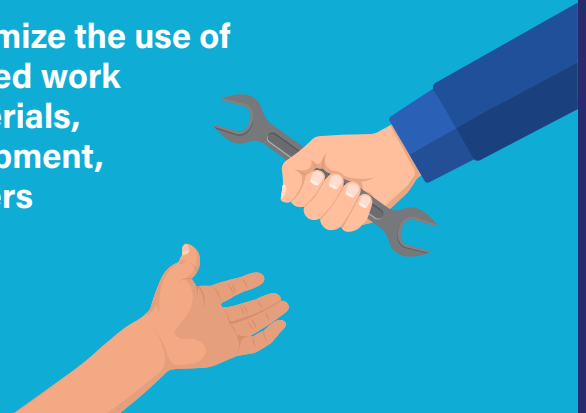
3

Disinfect vending
machines after
each use



4

Minimize the use of
shared work
materials,
equipment,
papers



5

Disinfect
workstations
between every
shift & in
between
employee
handoffs



6

Minimize
in-person
meetings
whenever
possible; if
necessary,
limit to 10
people with
social distancing





OFFICES REOPENING GUIDELINES

1

Wear face coverings in presence of others Maintain social distance of at least 6-ft.



2

Stagger start and end times to reduce congestion at elevators and on public transit



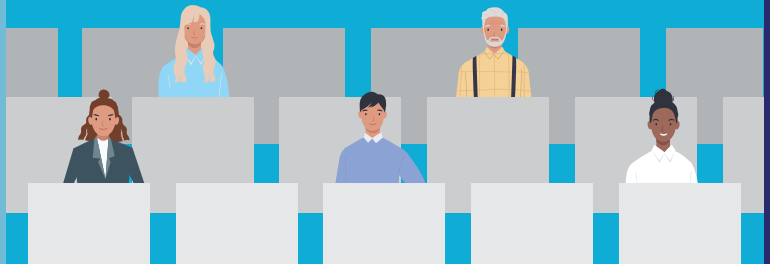
3

Keep your desk free of personal items for easy cleaning



4

Limit to 50% of office occupancy and encourage telework



5

Disinfect workstations upon entering office & before leaving



6

Use tele- & video-conferencing & minimize in-person meetings whenever possible; if in-person meetings are needed, limit to 10 people with social distancing





PERSONAL CARE SERVICES REOPENING GUIDELINES

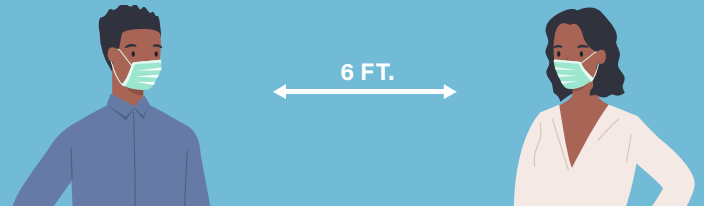
1

Customers and employees must wear face coverings during service



2

work stations should be configured to keep customers 6ft apart



3

Remove magazines and any shared items from waiting areas



4

No food or beverages will be served



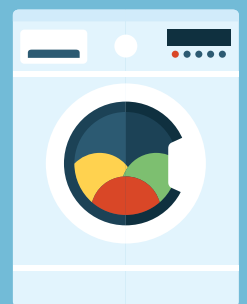
5

Fully disinfect workstations before + serving each customer and at closing time



6

Sanitize reusable customer articles (e.g. towels, blankets, capes, robes) after use



7

No more than 50% of occupancy or 5 customers per 1,000 square feet



8

Reservations only, no walk-ins permitted





RESTAURANTS & BARS REOPENING GUIDELINES

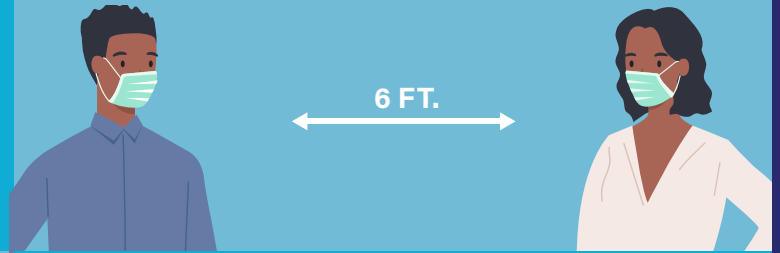
1

Wear face coverings in presence of others



2

Maintain social distance. Keep at least 6-ft. between tables and no more than 6 people to a party



3

Outdoor drinking and dining only



4

Wash hands for 20 seconds, at least every 30 minutes



5

Eliminate refilling customer beverages, close self-service beverage stations and water fountains



6

Clean and disinfect common areas and high-touch surfaces every 30 minutes, multi-use items after each use, and tables and chairs between parties





RETAIL BUSINESS REOPENING GUIDELINES

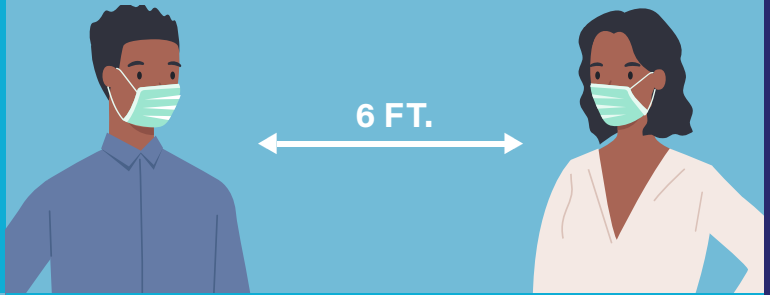
1

Wear face coverings in presence of others



2

Maintain social distance of at least 6-ft.



3

Sanitize common areas and/or commonly touched areas every 2 hours +



4

Checkout keypads, self-checkout stations, shopping carts/baskets disinfected after every use



5

Maximum of 50% of store capacity OR 5 customers allowed per 1000 sq. ft. of retail space



6

Customers cannot bring in reusable shopping bags & must bag own goods





SERVICE COUNTER REOPENING GUIDELINES

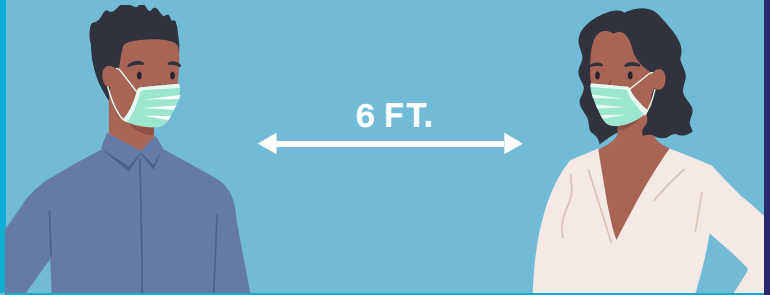
1

Wear face coverings in presence of others



2

Maintain social distance of at least 6-ft.



3

Frequent hand washing required



4

Remove magazines and any shared items from waiting areas



5

Incoming items must be kept separate from finished items



6

No more than 50% of occupancy or 5 customers per 1,000 square feet





YOUTH SPORTS REOPENING GUIDELINES

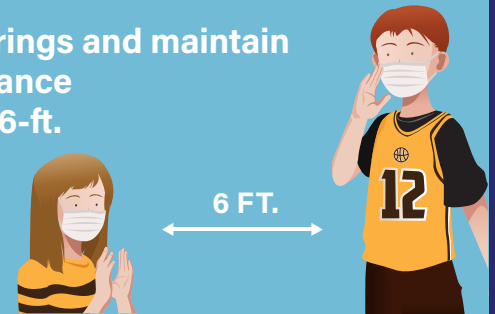
1

Drills only, no contact sports or games



2

Face coverings and maintain social distance of at least 6-ft.



3

Water fountains, except for touchless water bottle refill stations, should be made unavailable for use (e.g. turned off, covered, area blocked) if no touchless fountain is available, water may be served in sealed, single-use water bottles



4

Groups must be 10 or less for each adult



5

A designated employee is responsible for monitoring social distancing at all times



6

No walk-ins, no pick-up games



7

Participants must wash hands with soap and water or use hand sanitizer before participating



8

Groups of 10 participants must be 30 ft apart

