

---

**THE CITY OF BLUE ISLAND  
COOK COUNTY, ILLINOIS**

---

**RESOLUTION  
NUMBER 2023- 022**

---

**A RESOLUTION OF THE CITY OF BLUE ISLAND,  
COOK COUNTY, ILLINOIS, TO AUTHORIZE AND APPROVE  
THE PROPOSAL FROM PLAY ILLINOIS FOR PLAYGROUND  
EQUIPMENT AT THE JOHN D. RITA RECREATION CENTER**

---

**FRED BILOTTO, Mayor  
RAEANN CANTELO-ZYLMAN, City Clerk  
JAIRO FRAUSTO, City Treasurer**

**DEXTER JOHNSON  
LUIZ MONTOYA  
NANCY RITA  
BILL FAHRENWALD  
GABRIEL McGEE  
CANDACE CARR  
JOSH ROLL**

**Alderman**

---

**RESOLUTION NUMBER 2023-022**

**A RESOLUTION OF THE CITY OF BLUE ISLAND,  
COOK COUNTY, ILLINOIS, AUTHORIZE AND APPROVE THE PROPOSAL FROM  
PLAY ILLINOIS FOR PLAYGROUND EQUIPMENT AT THE JOHN D. RITA  
RECREATION CENTER**

---

**WHEREAS**, the City of Blue Island, Cook County, Illinois (the “City”) is a duly organized and existing City created under the provisions of the laws of the State of Illinois and operating under the provisions of the Illinois Municipal Code, and all laws amendatory thereof and supplementary thereto, with full powers to enact ordinances and adopt resolutions for the benefits of the residents of the City; and

**WHEREAS**, the City desires to approve the proposal from Play Illinois relating to a new playground at the John D. Rita Recreation Center, a copy of which is attached hereto and made a part hereof, as Exhibit A (the “*Proposal*”); and

**WHEREAS**, the City expects, once the Proposal is approved, to receive a contract relating to the installation of the playground from Play Illinois with costs similar to that in the Proposal; and

**WHEREAS**, the Mayor and Aldermen of the City of Blue Island deem it advisable and in the best interests of the health, safety and welfare of the residents to authorize the proposal from Play Illinois.

**NOW, THEREFORE, BE IT RESOLVED** by the Mayor and the Aldermen of the City of Blue Island, Cook County, Illinois as follows:

**Section 1.** That the above recitals and legislative findings are found to be true and correct and are hereby incorporated herein and made a part hereof, as if fully set forth in their entirety.

**Section 2.** The Proposal for a playground at John D. Rita Recreation Center, attached

hereto as **Exhibit A**, is hereby approved in substantially the same form with such necessary non-material changes as may be authorized by the Mayor to execute the purchase of the insurance coverage, the execution of which constitutes the approval by the City of any and all changes or revisions therein contained.

**Section 3.** The officials and officers of the City are hereby authorized to undertake actions on the part of the City as contained in the Proposal and subsequent contract to complete satisfaction of the provisions, terms or conditions stated therein.

**Section 4.** If any section, paragraph, clause or provision of this Resolution shall be held invalid, the invalidity thereof shall not affect any other provision of this Resolution.

**Section 5.** All ordinances, resolutions, motions or orders in conflict with this Resolution are hereby repealed to the extent of such conflict.

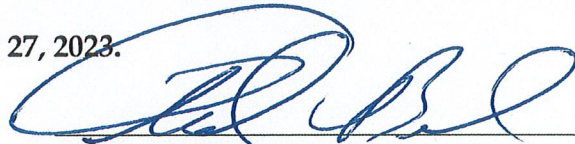
**Section 6.** This Resolution shall be in full force and effect immediately upon its passage, approval, and publication as required by law.

*(Left intentionally blank)*

ADOPTED this 27<sup>TH</sup> day of JUNE, 2023, pursuant to roll call as follows:

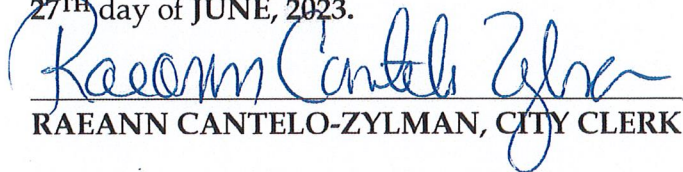
	YES	NO	ABSENT	PRESENT	ABSTAIN
Alderman JOHNSON	X				
Alderman FAHRENWALD	X				
Alderman RITA			X		
Alderman MONTOYA	X				
Alderman MCGEE	X				
Alderman CARR			X		
Alderman ROLL	X				
Mayor BILOTTO					
	5		2		

APPROVED by the Mayor on JUNE 27, 2023.



FRED BILOTTO  
MAYOR OF THE CITY OF BLUE ISLAND,  
COUNTY OF COOK AND STATE OF ILLINOIS

ATTESTED and Filed in my office this  
27<sup>TH</sup> day of JUNE, 2023.



RAEANN CANTELO-ZYLMAN, CITY CLERK

STATE OF ILLINOIS        )  
  )  
COUNTY OF COOK        )        ss.

**CERTIFICATION**

**I, RAEANN CANTELO-ZYLMAN, DO HEREBY CERTIFY THAT** I am the duly elected City Clerk of the City of Blue Island, Illinois, as such City Clerk, I am the keeper of the minutes and records of the Proceedings of the City Council of the said City and have in my custody the RESOLUTIONS and BOOKS of the records of said City.

**I DO FURTHER CERTIFY** that the attached and foregoing is a true and correct copy of the certain **RESOLUTION: A RESOLUTION OF THE CITY OF BLUE ISLAND, COOK COUNTY, ILLINOIS, TO AUTHORIZE AND APPROVE THE PROPOSAL FROM PLAY ILLINOIS FOR PLAYGROUND EQUIPMENT AT THE JOHN D. RITA RECREATION CENTER.**

**RESOLUTION NO. 2023-022** which was adopted at a regular meeting of the City Council of the City of Blue Island, Illinois held on the **27<sup>TH</sup> of June, 2023**; that at said meeting **5** Alderman were present; that at said meeting, on motion duly made and seconded that the Resolution did pass and on the roll being called the vote of each Aldermen present on the question of the passage of said Resolution was duly and separately taken by Ayes and Nays and their names and votes recorded in the minutes of **5** Alderman voted Aye and **0** Alderman voted Nay and **0** Alderman voted Abstain and **2** Alderman Absent.

**I DO FURTHER CERTIFY** that the original Resolution which the foregoing is a true copy, is entrusted to my care for safe keeping, and that I am the lawful keeper of the same.

**IN WITNESS WHEREOF**, I have hereunto set my hand and affixed the Corporate Seal of the City of Blue Island aforesaid, at the said City in the County and State aforesaid, this **27<sup>th</sup>** day of **June, 2023**.

CORPORATE SEAL

  
City Clerk

*Exhibit A*  
Proposal

**John Rita Recreation Playground  
Blue Island Park District**

March 30, 2023

Tom Wogan  
Blue Island Park District  
12804 Highland Ave  
Blue Island, IL 60406

Dear Tom Wogan:

Play Illinois is delighted to provide Blue Island Park District with this playground equipment proposal.

This design was developed with your specific needs in mind, and we look forward to discussing this project further with you to ensure your complete satisfaction. Play Illinois is confident that this proposal will satisfy Blue Island Park District's functional, environmental, and safety requirements - and most importantly, bring joy and excitement to the children and families directly benefiting from your new playground.

You have our personal commitment to support this project and your organization in every manner possible. We look forward to continuing to develop a long-standing relationship with Blue Island Park District. We appreciate your consideration and value this opportunity to earn your business.

Sincerely,

Landscape Architect: Mike Maloney  
Sales Representative: Shaun Winston

Play Illinois  
310 N Grant Street  
Westmont, IL 60559

# DESIGN SUMMARY

Play Illinois is very pleased to present this proposal for consideration for the John Rita Recreation Playground located in Blue Island. BCI Burke Company, LLC has been providing recreational playground equipment for over 90 years and has developed the right mix of world-class capabilities to meet the initial and continuing needs of Blue Island Park District. We believe our proposal will meet or exceed your project's requirements and will deliver the greatest value to you.

The following is a summary of some of the key elements of our proposal:

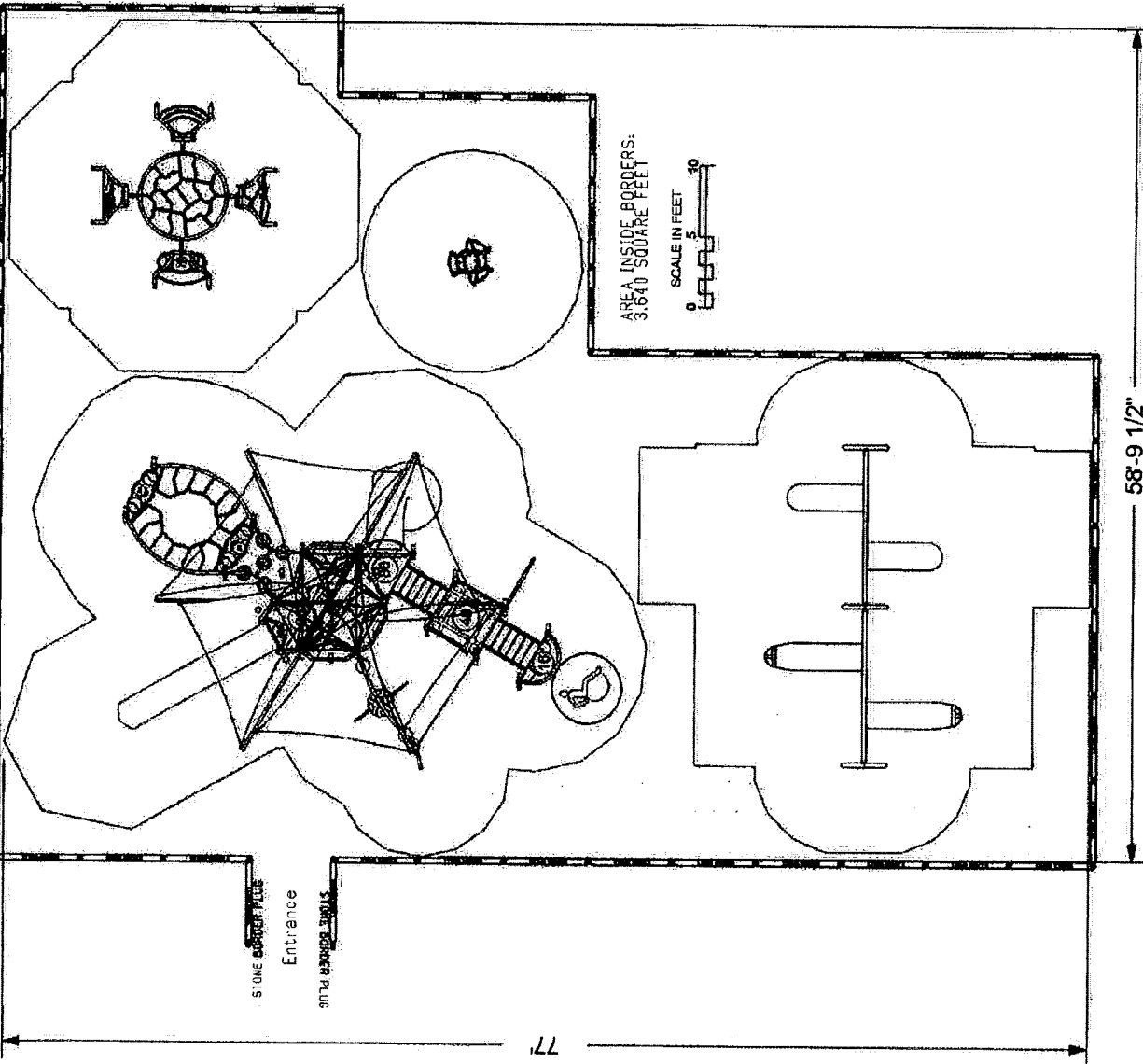
- **Project Name:** John Rita Recreation Playground
- **Project Number:** 129-166703-1
- **User Capacity:** 116
- **Age Groups:** Ages 5-12 years
- **Dimensions:** 77' 0" x 58' 9"
- **Designer Name:** Stevie Rosenkranz

Play Illinois has developed a custom playground configuration based on the requirements as they have been presented for the John Rita Recreation Playground playground project. Our custom design will provide a safe and affordable playground environment that is aesthetically pleasing, full of fun for all users and uniquely satisfies your specific requirements. In addition, proposal # 129-166703-1 has been designed with a focus on safety, and is fully compliant with ASTM F1487 and CPSC playground safety standards.

We invite you to review this proposal for the John Rita Recreation Playground playground project and to contact us with any questions that you may have.

Thank you in advance for giving us the opportunity to make this project a success.





**INFORMATION**  
**MINIMUM FALL ZONE**  
 SURFACED WITH  
 RESILIENT MATERIAL  
**AREA**  
 2583 SQ.FT.  
**PERIMETER**  
 401 FT.

**STRUCTURE SIZE**  
 77' 0" x 58' 9"

**STRUCTURE IS DESIGNED FOR CHILDREN AGES:**

6-23 MONTH OLDS  
 2-5 YEAR OLDS  
 5-12 YEAR OLDS  
 13 + YEAR OLDS

**NSF** **NSF** **NSF**

**IPENMA CERTIFIED**

The play components identified in this plan are IPENMA certified. The use and layout of these components conform to the requirements of ASTM F1487. To verify product certification, visit [www.ipenma.org](http://www.ipenma.org)

The space requirements shown here are to ASTM standards. Requirements for other standards may be different.

The use and layout of play components identified in this plan conform to the CPSC guidelines. U.S. CPSC recommends the separation of age groups in playground layouts.

**WARNING!**

ACCESSIBLE SAFETY SURFACING MATERIAL IS REQUIRED BENEATH AND AROUND THIS EQUIPMENT.

FOR SLIDE FALL ZONE SURFACING AREA SEE CPSC's Handbook for Public Playground Safety.

PLATFORM HEIGHTS ARE IN INCHES ABOVE RESILIENT MATERIAL.

**ADA ACCESSIBILITY GUIDELINE (ADAAG CONFORMANCE)**

NUMBER OF PLAY EVENTS:	27
NUMBER OF ELEVATED PLAY EVENTS:	5
NUMBER OF ELEVATED PLAY EVENTS ACCESSIBLE BY RAMP:	PROVIDED: 0
NUMBER OF ELEVATED PLAY EVENTS ACCESSIBLE BY TRANSFER SYSTEM:	PROVIDED: 4
NUMBER OF ELEVATED PLAY EVENTS ACCESSIBLE BY RAMP OR TRANSFER SYSTEM:	PROVIDED: 18
NUMBER OF GROUND LEVEL PLAY EVENTS:	PROVIDED: 7
NUMBER OF TYPES OF GROUND LEVEL PLAY EVENTS:	RECD: 0
	RECD: 4
	RECD: 2
	RECD: 2
	RECD: 3

**Burke.**

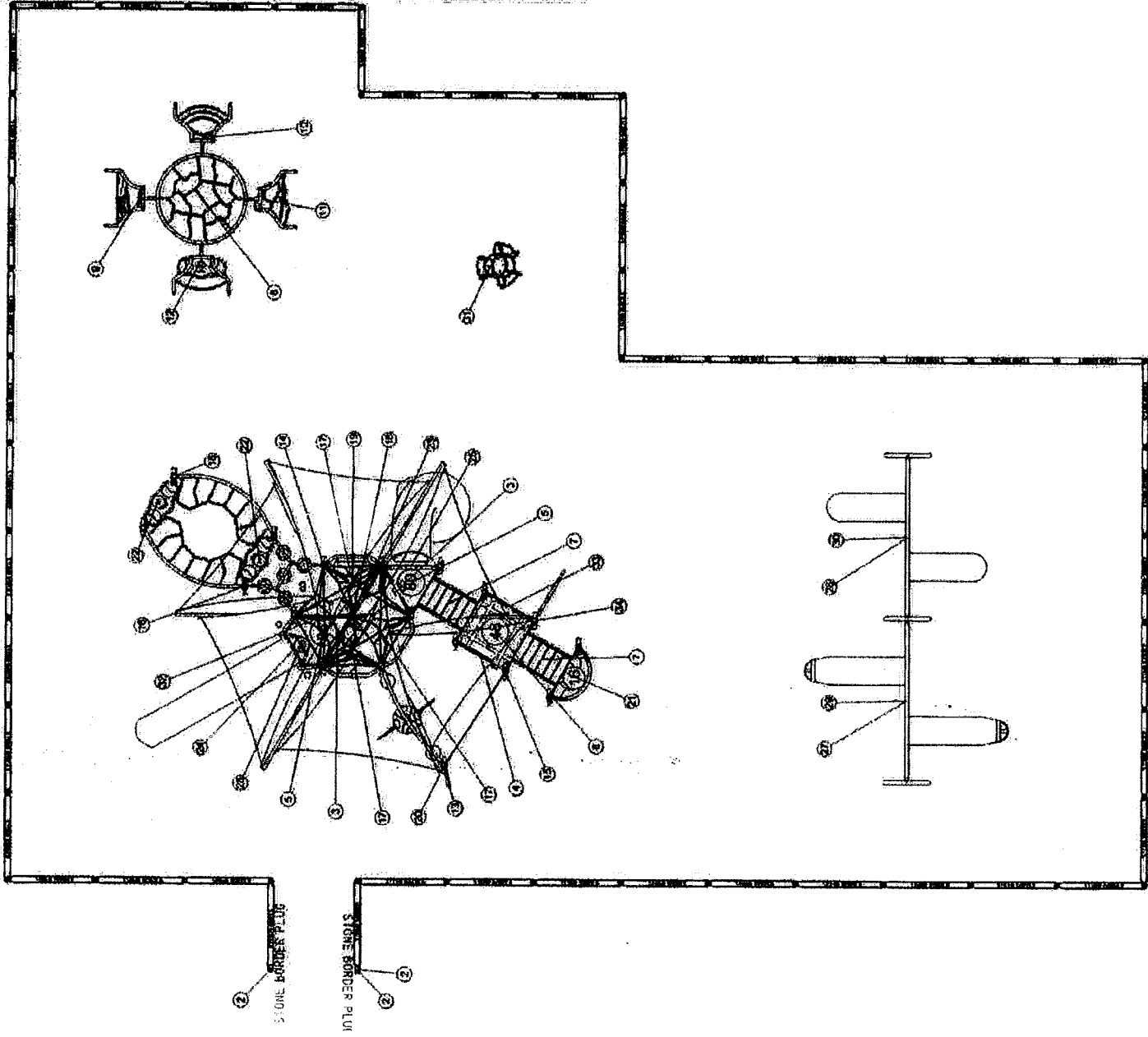
March 30, 2023

SERIES: Basics, Intensity, Nucleus  
 SITE PLAN  
 DRAWN BY: Stevie Rosenkranz

John Rita Recreation Playground  
 2805 W 141st Street  
 Blue Island, IL 60406

Play Illinois  
 129-166703-1

ITEM	COMP.	DESCRIPTION
1	046-0083	BT STONE BORDER/2 DRIVE PINS
2	046-0084	PLUG
3	270-0120	EVOLUTION UNITARY ENCLOSURE
4	270-0122	EVOLUTION OFFSET ENCLOSURE
5	470-0129	TRIANGLE PLATFORM
6	270-0130	SQUARE PLATFORM
7	370-0040	EVOLUTION 32" TRANSITION SL
8	370-0029	PLEXUS OVERHEAD
9	370-0030	PLEXUS HOLE CLIMBER
10	370-0031	PLEXUS RING CLIMBER
11	370-0032	PLEXUS TANGLE CLIMBER
12	370-0033	PLEXUS STEP CLIMBER
13	370-0064	VERTO CLIMBER 1
14	370-1024	INTENSITY BOOSTER CLIMBER
15	370-1055	TRANGO TWO POST TO POST
16	370-1070	STRAIGHT HORIZONTAL ABSE
17	370-1700	NUCLEUS CORE CROSS SUPPO
18	370-1705	NUCLEUS CORE CLIMBER 8'
19	370-1709	NUCLEUS CORE TRANSFER BEE
20	370-1713	TAKTIKS BOW CLIMBER
21	470-0075	CRESSCENT PLATFORM
22	470-0101	DYNAMIC PAD
23	470-0678	ARA HEX SHADE CANOPY
24	470-0756	VELO XL SLIDE, 65" 36" W/O HO
25	470-0672	EXTREME TWIST SPIRAL SLIDE
26	470-0675	CORE SLIDE ARCH
27	550-0100	TOT SEAT, 7' 8" PAIR, STD CH
28	550-0112	BELT SEAT, 6' PAIR, STD CHAIN
29	550-0156	3 1/2' OD ARCH SWING
30	550-0159	3 1/2' OD ARCH SWING ADD-ON
31	560-2069	COMET II
32	570-0100	EVOLUTION BARRIER
33	570-1058	3-IN-A-RROW PANEL ABOVE PLA
34	570-2729	CLASSIC GAME RING PANEL



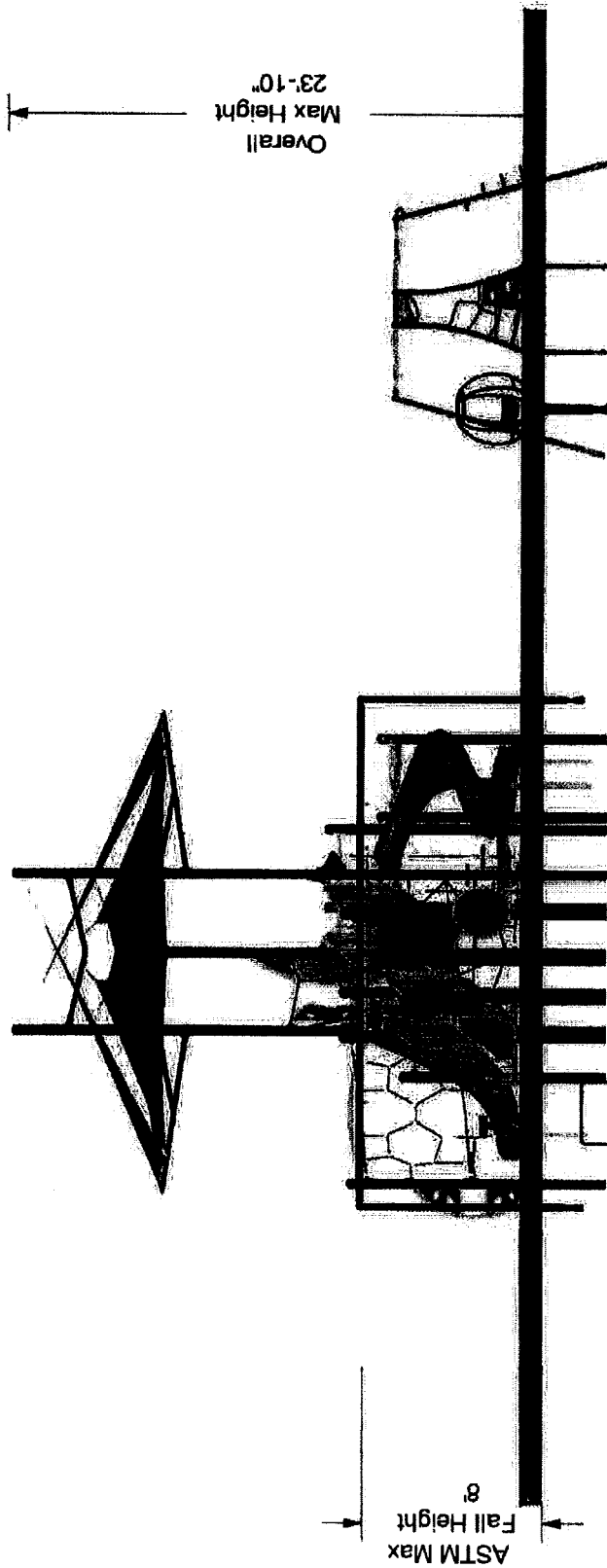
**Burke**

March 30, 2023

SERIES: Basics, Intensity, Nucleus  
 COMPONENT PLAN  
 DRAWN BY: Stevie Rosenkranz

John Rita Recreation Playground  
 2805 W 141st Street  
 Blue Island, IL 60406

Play Illinois  
 129-166703-1



The protective surfacing for this design must accommodate the critical fall height.

**Burke.**

March 30, 2023

SERIES: Basics, Intensity, Nucleus  
 ELEVATION PLAN  
 DRAWN BY: Stevie Rosenkranz

John Rita Recreation Playground  
 2805 W 141st Street  
 Blue Island, IL 60406

Play Illinois  
 129-166703-1



**Burke**

March 30, 2023

SERIES: Basics, Intensity, Nucleus  
ISOMETRIC PLAN  
DRAWN BY: Stevie Rosenkranz

John Rita Recreation Playground  
2805 W 141st Street  
Blue Island, IL 60406

Play Illinois  
129-166703-1

BCI Burke Company, LLC PO Box 549 Fond du Lac, Wisconsin 54936-0549 Telephone 920-921-9220



# Proposal # 129-166703-1

March 30, 2023

2023 Pricing

**Proposal Prepared for:**

Tom Wogan  
Blue Island Park District  
12804 Highland Ave  
Blue Island, IL 60406  
Phone:

**Project Location:**

John Rita Recreation Playground  
2805 W 141st Street  
Blue Island, IL 60406

**Proposal Prepared by:**

Play Illinois  
310 N Grant Street  
Westmont, IL 60559  
Phone:  
Fax:

Mike Maloney  
Phone: 630-514-5405  
Fax:  
mike@playil.com

Component No.	Description	Qty	User Cap	Ext. User Cap	Weight	Ext. Weight
<b>6' Stone Borders</b>						
046-0053	6ft STONEBORDER/2 DRIVE PINS	47	0	0	32	1,504
046-0054	PLUG	3	0	0	1	3
<b>Burke Basics</b>						
550-0100	TOT SEAT, 7' & 8' PAIR, STD ...	1	2	2	23	23
550-0112	BELT SEAT, 8' PAIR, STD CHAIN	1	2	2	20	20
550-0158	3 1/2" OD ARCH SWING	1	0	0	264	264
550-0159	3 1/2" OD ARCH SWING ADD-ON	1	0	0	160	160
560-2589	COMET II	1	6	6	147	147
660-0101	INSTALL KIT, BURKE BASICS - P...	1	0	0	2	2
<b>Intensity</b>						
370-0829	PLEXUS OVERHEAD	1	14	14	96	96
370-0830	PLEXUS HOLE CLIMBER	1	2	2	97	97
370-0831	PLEXUS RUNG CLIMBER	1	2	2	83	83
370-0832	PLEXUS TANGLE CLIMBER	1	2	2	89	89
370-0833	PLEXUS STEP CLIMBER	1	2	2	121	121
370-1624	INTENSITY PODSTEP CLIMBER	1	10	10	105	105
370-1655	TRANGO TWO, POST TO POST 5 TO...	1	5	5	10	10
370-1676	STRAIGHT HORIZONTAL LADDER; N...	2	6	12	58	116
370-1718	TAKTIKS BOW CLIMBER	1	7	7	103	103
470-0101	DYNAMIC PAD	2	2	4	27	54
<b>Nucleus</b>						
072-0500-108C	5" OD X 108" CAPPED POST	2	0	0	57	114
072-0500-120C	5" OD X 120" CAPPED POST	2	0	0	63	126
072-0500-124C	5" OD X 124" CAPPED POST	1	0	0	65	65
072-0500-136C	5" OD X 136" CAPPED POST	1	0	0	71	71
072-0500-140C	5" OD X 140" CAPPED POST	3	0	0	74	222
072-0500-148C	5" OD X 148" CAPPED POST	2	0	0	78	156
072-0500-156C	5" OD X 156" CAPPED POST	1	0	0	82	82
072-0500-172C	5" OD X 172" CAPPED POST	1	0	0	90	90
072-0502-216S	5" OD X 216" SWAGED POST	6	0	0	113	678
270-0120	EVOLUTION UNITARY ENCLOSURE	2	0	0	34	68
270-0122	EVOLUTION OFFSET ENCLOSURE	1	0	0	34	34
270-0129	TRIANGLE PLATFORM	2	2	4	48	96
270-0130	SQUARE PLATFORM	1	6	6	106	106



# Proposal # 129-166703-1

March 30, 2023

2023 Pricing

370-0040	EVOLUTION 32" TRANSITION STAI...	2	6	12	239	478
370-0854	VERTO CLIMBER 1	1	1	1	35	35
370-1703	NUCLEUS CORE CROSS SUPPORT	3	0	0	32	96
370-1705	NUCLEUS CORE CLIMBER, 8'	1	12	12	161	161
370-1709	NUCLEUS CORE TRANSFER BELT	1	2	2	60	60
470-0075	CRESCENT PLATFORM	1	1	1	52	52
470-0678	ARA HEX SHADE CANOPY	1	0	0	576	576
470-0758	VELO XL SLIDE, 88"-96" W/O HO...	1	2	2	134	134
470-0872	EXTREME TWIST SPIRAL SLIDE	1	2	2	217	217
470-0875	CORE SLIDE ARCH	1	0	0	174	174
570-0100	EVOLUTION BARRIER	1	0	0	52	52
570-1858	3-IN-A-ROW PANEL, ABOVE PLATF...	1	2	2	45	45
570-2729	CLASSIC GAME RING PANEL	1	2	2	80	80
600-0104	NPPS SUPERVISION SAFETY KIT	1	0	0	3	3
660-0103	MAINTENANCE KIT, STRUCTURE	1	0	0	7	7
660-0104	INSTALLATION KIT, STRUCTURE	1	0	0	5	5

Total User Capacity: 116

Total Weight: 7,080 lbs.

Lump Sum Proposal: Includes removal of existing playground equipment and borders, purchase, installation, safety surfacing, borders and complete landscape restoration

**\$157,690.00**

### Special Notes:

Prices do not include sales tax (if applicable). Prices are based on standard colors per CURRENT YEAR BCI Burke Catalog. Custom colors, where available, would be an extra charge. Pricing is valid for 30 days from the date of this proposal.

# PLAY THAT MOVES YOU

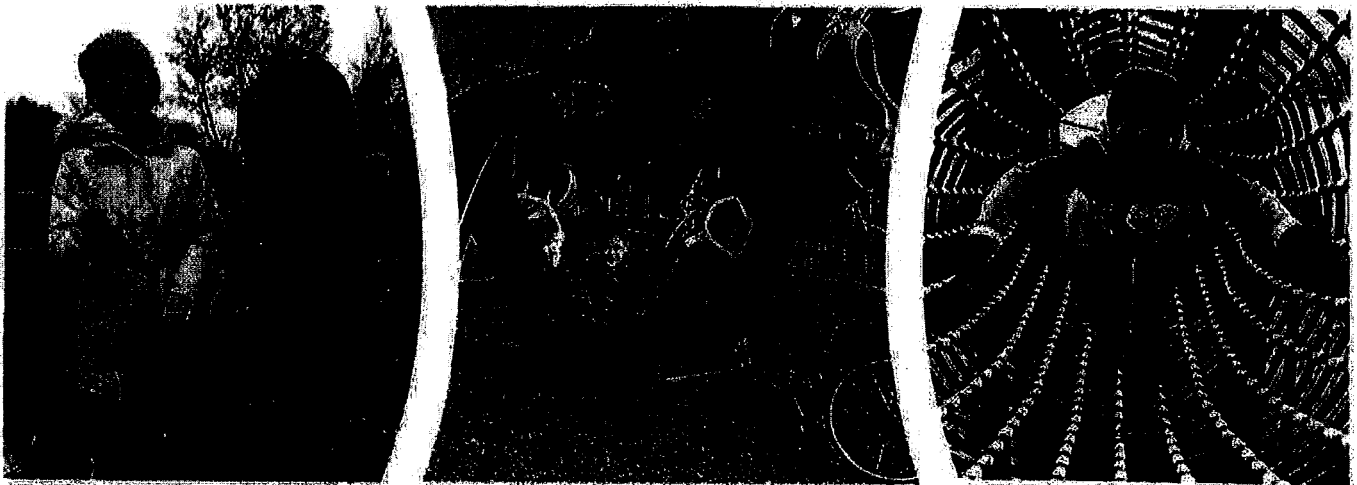
At Burke, movement is our mantra. It drives our purpose and ignites our passion to bring the best in playground design and the most innovative, developmentally rich play, outdoor fitness and recreation products. Our research and testing push us to create new and unique ways to challenge children, families, schools, communities, teams and individuals to move, to grow and to play. Play fosters opportunities for connection between generations and with our peers, provides growth and togetherness and moves us in so many ways. Join Our Movement® and experience the many ways play can move you.

## PLAY FOR HEALTH

Movement is life and is one of the most important aspects in overall health and wellness for people of all ages and abilities. Burke has playground and fitness offerings that engage everyone in all stages of life to move. Our Nucleus® and Intensity® playgrounds feature a fusion of play that helps children engage in active play throughout the day for enhanced growth and developmental opportunities. ELEVATE® Fitness Course brings obstacle course fitness to a whole new level and is poised to engage children 5-12, teenagers and adults. ACTIVATE® Fitness Circuit and INVIGORATE® Dynamic Fitness are a great way to add events to a fitness trail or create a space for outdoor exercise. Our variety of fitness equipment will meet you where you are in your fitness journey and challenge you to be more.

## PLAY FOR YOUR MIND

Playful experiences are learning experiences and children at play are developing a wide-variety of skills that range from problem solving and cognitive planning to memory and self-regulation. Each and every time a child plays they are contributing positively to their cognitive development and setting themselves up for future success.



## PLAY FOR CONNECTION

Play provides us with common experiences, shared laughter and true connection. It brings communities together and helps us return to the simplicity of basic human connection and kindness. Parks and recreation spaces are critical because they lay the groundwork for the intergenerational engagement, interaction and development we all seek. Products such as Novo® Playful Furniture, with interesting pieces that can be used in a variety of ways, foster those opportunities by creating a space where everyone can interact and play together in their own way. The Konnection® Swing revolutionizes connection by promoting face-to-face connections and playing together. Every person of every age and ability brings their own unique experiences that enhance the collective and moves us all through play.

## PLAY FOR MOTION

Motion play creates a childhood experience like no other by creating movement for children of all abilities and providing developmental benefits, including increased spatial awareness, inner ear stimulation and balance. Motion can be a source of calm for children with sensory processing differences while providing delight and excitement for children of all ages.

## PLAY FOR DEVELOPMENT

Play is the work of childhood and helps children express themselves, monitor their emotions and develop a sense of identity that fuels their self-esteem and shapes their world view. Creating environments that foster this growth is at the heart of what we do at Burke and helps to teach resiliency and perseverance, all skills that transcend the playground and help children to develop into successful and healthy adults.

# WORK THAT MOVES US

Our mission is simple – to bring Play That Moves You® to communities around the world. This mission drives us each and every day to innovate the best in play, playgrounds, recreation and outdoor fitness equipment that help everyone find the best of themselves through play. We are passionate about our legacy of customer service and craftsmanship while looking to the future and always striving to be better.

At Burke, play inspires us to create a community of people that are invested in growth, aren't afraid to commit to positive change and seek to enrich and enhance the lives of the people in communities where we serve and live. Researching, innovating and creating products that help communities and people grow and thrive is the core of our purpose. In our own community, we partner with organizations such as the YMCA and Boys and Girls Club of Fond du Lac and we support, on a larger scale, organizations, municipalities, schools, churches and associations to Join Our Movement® and help let play lead the way for change. This is work that moves us and we hope the results move you.

## HANDCRAFTED IN AMERICA'S HEARTLAND

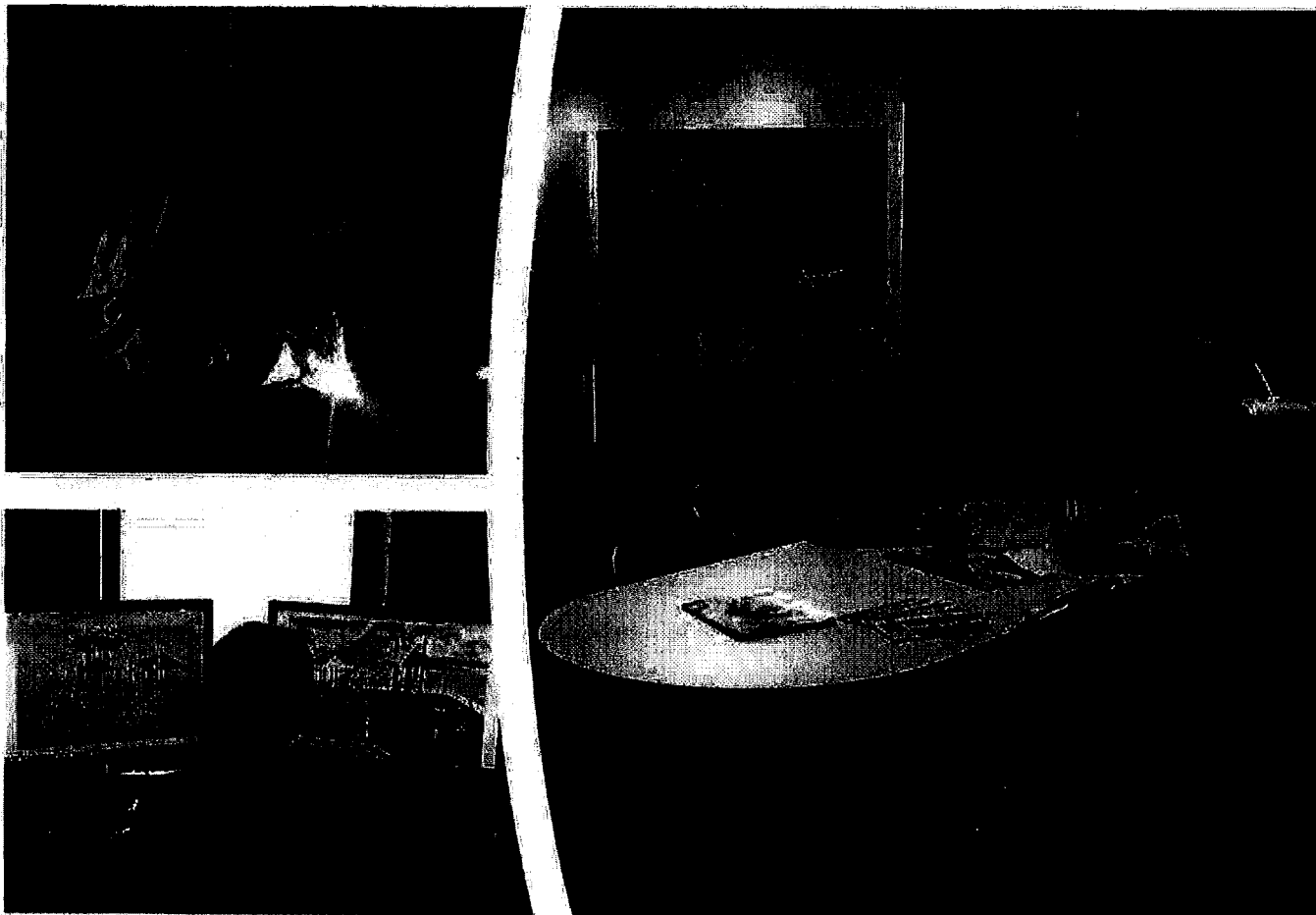
Walk through our Fond du Lac, WI manufacturing facility and you will see playgrounds coming to life through the hands of our people. In the age of assembly lines, we work to combine efficiency with a personal touch that makes every playground special. Bringing quality playgrounds to communities like yours is Work That Moves Us, and we hope the playgrounds we make move you too.

## SUPERIOR SERVICE

Customer Service is a hallmark of Burke and we take pride in the fact that when you call, we answer. We have factory-direct customer service representatives that are available to answer questions, help with replacement parts or field inquiries about installations.

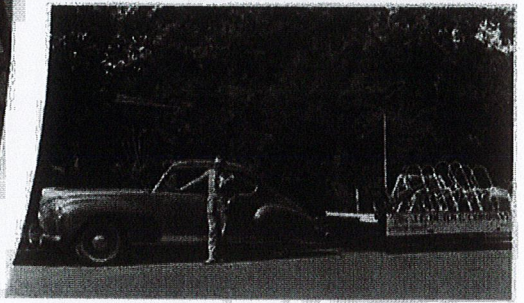
## YOUR BURKE REPRESENTATIVE

We as Burke Representatives are passionate about bringing play to your community and helping you design your perfect play environment! We are knowledgeable and experienced about the entire playground process from site evaluation to design to maintenance and will work with you beyond installation to make sure your playground is, and remains, all you dreamed!



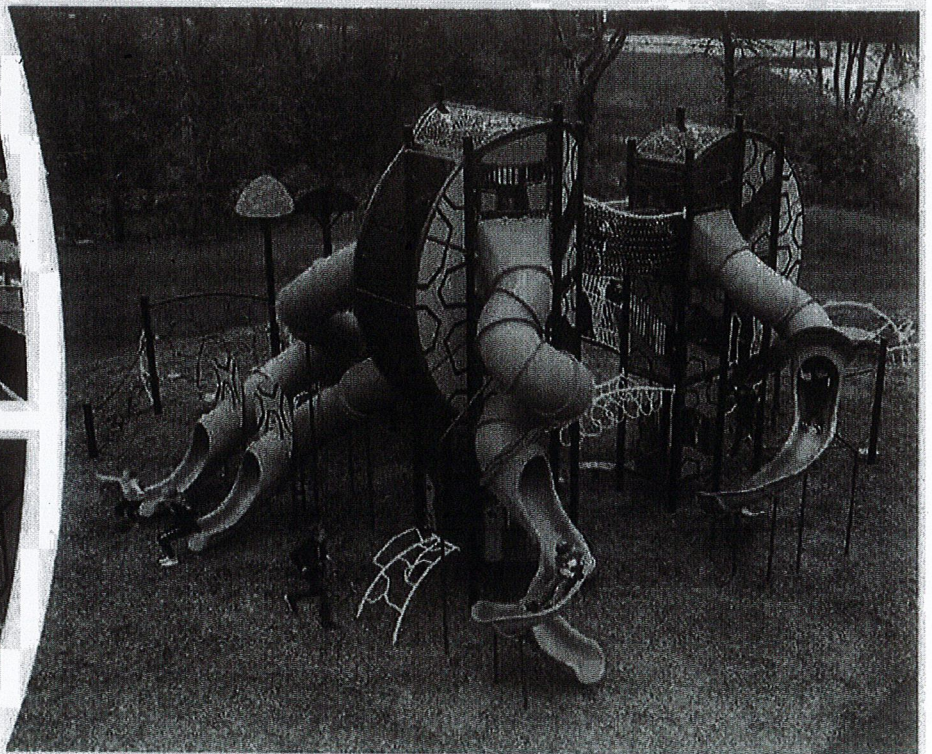


# BURKE'S HISTORY



## MORE THAN A CENTURY OF PLAY

Guided by our legacy of innovation, customer service and creativity, we are making the very best and most innovative playground, outdoor fitness and recreation products in our history! Our founder J.E. Burke set the course more than a century ago and we're taking his vision and making it even bigger! Through research, analysis and continuous improvement, we're designing products and playspaces that bring Play That Moves You® to communities for more fun, movement, engagement and development! Play is our passion, our mission and our business and we can't wait for you to Join Our Movement.



# BURKE BUILT QUALITY

Discover the value of investing in a **Burke Playground:**

## **KOREKONNECT® DIRECT-BOLT CLAMP SYSTEM:**

Nucleus® features our Industry-leading KoreConnect direct-bolt clamp system resulting in the strongest and most accurate connection system ever. Factory located connection points make for easy, precise installation and an error-free fit. Best of all, KoreConnect is covered for 100 years under our non-prorated Generations Warranty®.

## **DIRECT-BOLT CONNECTION SYSTEM:**

Intensity®, ELEVATE® Fitness Course, ACTIVATE® Fitness Circuit and Synergy® feature Burke's trusted direct-bolt connection that uses a durable, straightforward direct-bolt system to ensure a trouble-free installation and provide the necessary strength to accommodate the demands of playing children. Like our KoreConnect system, Direct-Bolt connections are covered for 100 years under our Generations Warranty.

## **EZKONNECT® DECK MOUNTING SYSTEM:**

Our exclusive self-leveling deck attachment and factory CNC construction allows for faster and more precise location of decks during installation. The 2-bolt per corner deck attachment increases overall structure strength and stability.

## **PLATFORMS:**

Burke's oversized non-slip platforms are constructed of heavy-duty punched steel that can support more than 2 tons. Our vinyl coating is California compliant, free of lead and other hazardous heavy metals.

## **TAMPER-RESISTANT STAINLESS STEEL HARDWARE:**

All hardware is covered for 100 years under our Generations Warranty.

## **PREMIUM POWDER COATINGS:**

Our industry-leading powder coatings and finishes prevent fading, last longer and deter rust. We also offer a "coastal package" powder coat system. This special powder coat system for metal components and upright posts will provide additional corrosion and chemical protection along with added longevity to the color and gloss retention of the powder coated parts. Contact your Burke Representative for more information on colors, price and warranty.

## **COMPOUND PLASTICS WITH UV-20:**

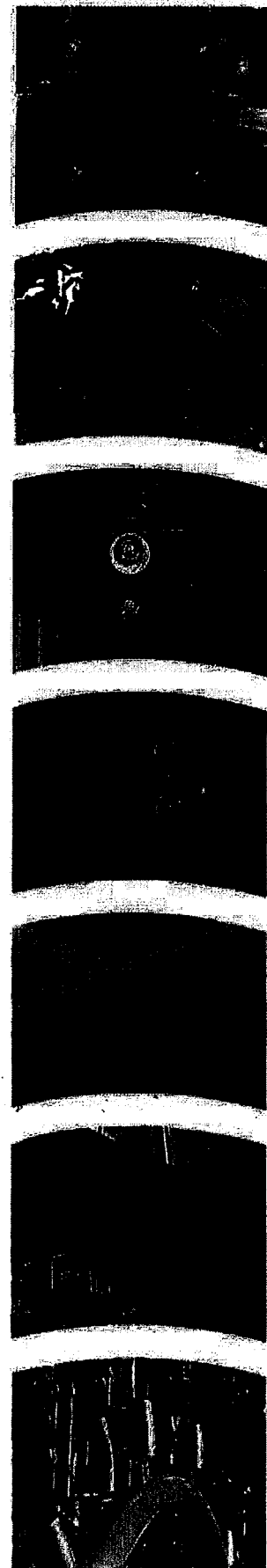
You'll get long wear and bright, vibrant colors that hold up for years thanks to our thick, durable rotomolded plastics with UV-20 protection. This is why we can cover them for 15 years under our non-prorated Generations Warranty.

## **CLIMBING CABLES:**

Our climbing cables are flexible enough to provide movement, yet strong enough to last. Our ropes are made from 6 polyester cords with steel reinforcement wrapped around a synthetic fiber core. Each cord contains 8 galvanized steel strands tightly covered with polyester multi-fibers. Our RopeVenture® cables consist of 6 strands, each containing 24 stainless steel reinforcing strands within a nylon sleeve, wrapped around a solid nylon core.

## **ALUMINUM CONNECTORS:**

Swivel connectors at the end of our ropes allow assembly at any angle with no unwanted twists in the net. The aluminum fittings used to secure the joints are swaged in place to prevent any movement between the rope and fittings that could cause wear.



# FREE RESOURCES

## NPPS SAFETY KIT

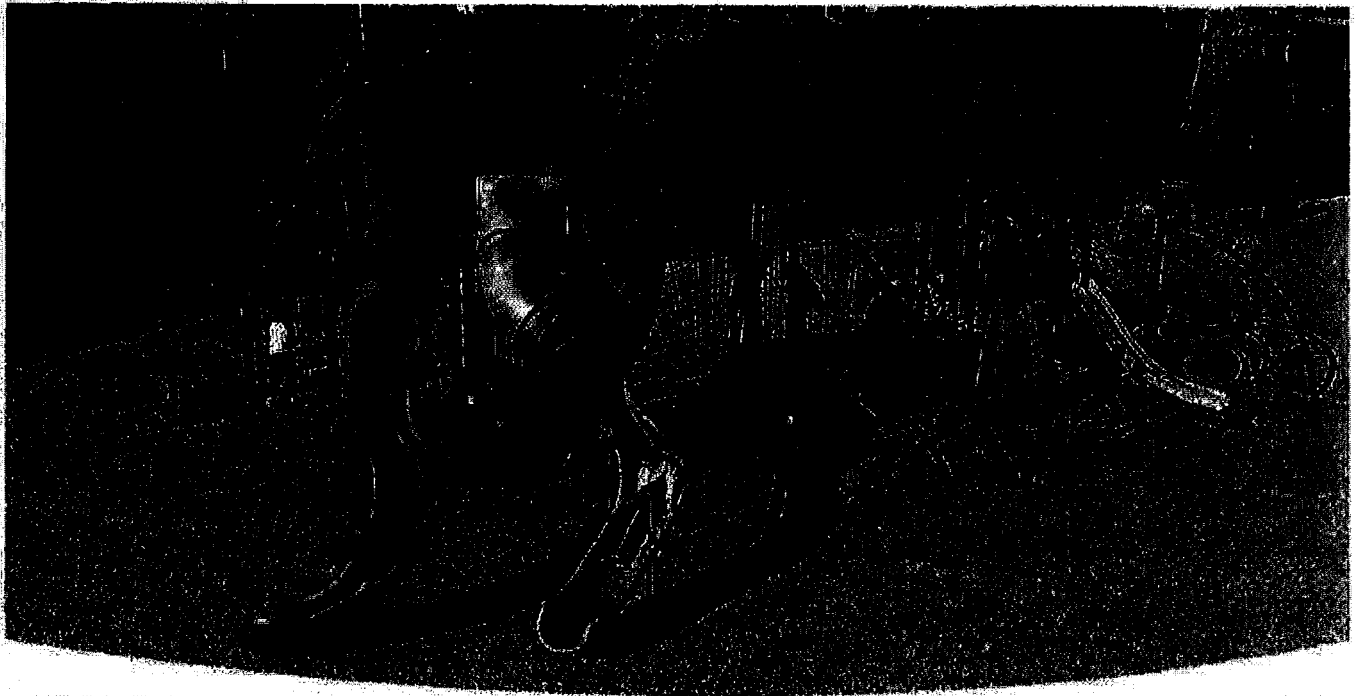
Burke truly gives you the most value for your money. As part of our Total Cost of Ownership Package, we offer value-added resources FREE with every playground structure purchase. The National Program for Playground Safety (NPPS) Playground Supervision Safety Kit helps supervisors and educators be prepared on the playground. Learn more at [bciburke.com/safety](http://bciburke.com/safety).

## CUSTOM MAINTENANCE KIT

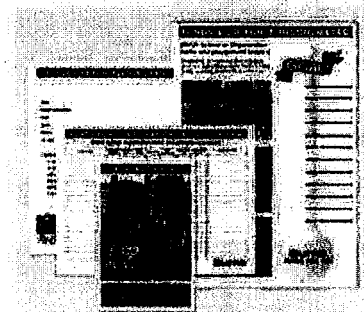
To help maintain a safe, functioning playground we include a custom maintenance schedule, touch-up paint, graffiti remover and carrying case FREE with every playground structure purchase.

## PLANNING & FUNDING TOOLS

We provide you with FREE tools to plan your playground from fundraising and design to installing a community build playground. At Burke, we understand the dedication and hard work it takes to raise the funds for playground equipment. That's why we created Funds for Fun, a direct donation fundraising program to help your organization raise the funds it needs for your new playground. We've also partnered with The School Funding Center to provide up-to-date grant information along with expert grant writing services. Learn more at [bciburke.com/funding](http://bciburke.com/funding).



**FREE WITH EVERY BURKE  
PLAY STRUCTURE PURCHASE**



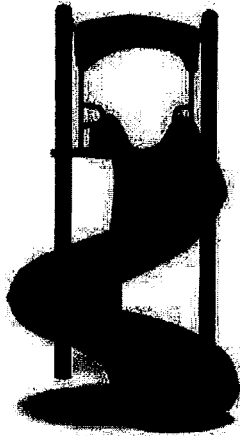
**FREE FUNDRAISING TOOLS!**

BCIBURKE.COM

**Burke**

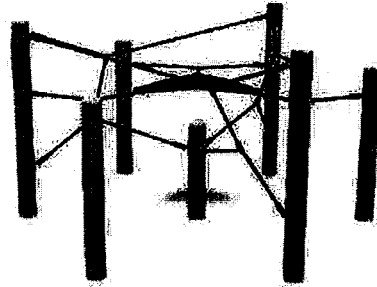
800.266.1250

# FEATURED PLAY EVENTS



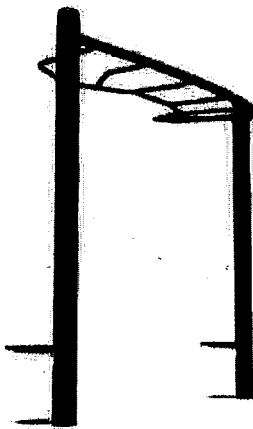
## Extreme Twist Spiral Slide

The Extreme Twist is designed with a minimal footprint so there's more room for more play. Don't be fooled by the small footprint though, it's huge on fun and development. Sliding is an incredible way to enhance balance and coordination while developing turn taking and cooperation skills.



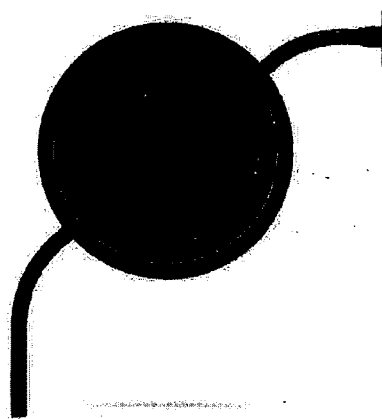
## Nucleus Core Climber

Nucleus Core is the beginning of an incredible play experience that will keep children moving, discovering and surprising themselves at every turn. Core lays the foundation for exploration with multiple climbing paths and challenge levels that link children to slides, towers, climbers and more.



## Straight Horizontal Ladder

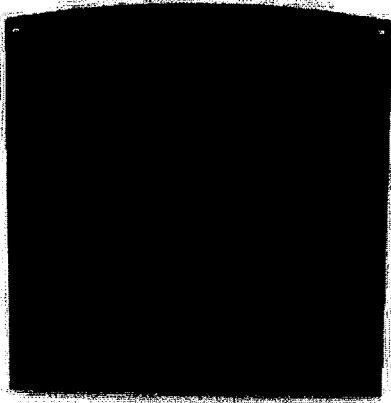
Overhead Ladders offer so many opportunities for play and development within a playspace. These new overheads embody Burke's energetic design language, are loads of fun and promote upper body strength and teach resilience!



## Pinball/Piston Ring Panel

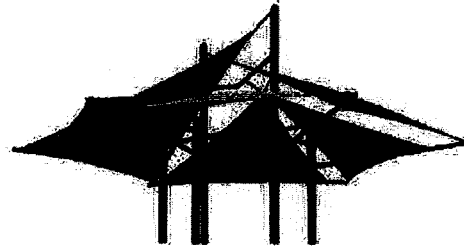
Interactive and fun, our new Pinball/Piston Panel enhances cognitive development and fine motor skills while adding visual interest to your playspace, outdoor classroom or anywhere you need more play.

# FEATURED PLAY EVENTS



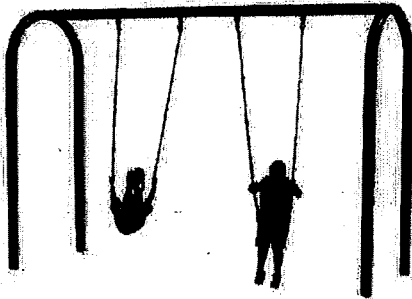
## 3-In-A-Row Panel

Play panels offer opportunities for all children to develop skills, have fun and spend time learning outside. 3-In-A-Row is a way to bring games to the playground and teach cooperation.



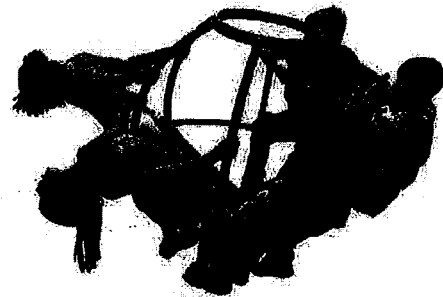
## Ara Hex Shade

The Ara Shade System provides protection from the sun with 97% UV screen protection and is designed to withstand up to 90mph winds. The addition of Ara can change the entire look of the space and elevate the design to a whole new level!



## 3.5" Arch Swing

Swings help children develop coordination and balance while providing an engaging sensory experience.



## COMET II

It challenges children to utilize their strength, balance and coordination. It can be used by a single child or by a group of children for maximum play ability. Children can sit or stand on the outside or inside of the comet.



# Proposal # 129-166703-1

March 30, 2023  
2023 Pricing

## Selected Color List

<u>Color Group</u>	<u>Color</u>
<i>Phase 1</i>	
Accessory	Lemon
Platform	Gray
2 Color Extruded/Flat (outer)	Orange
2 Color Extruded/Flat (inner)	Black
Post	Navy
1 Color Extruded/Flat	Orange
Rotomolded	Lime
Intensity/Rocky Mountain	Lime
Kore Konnect	Navy
<i>Phase 2</i>	
Accessory	Lemon
1 Color Extruded/Flat	Orange
Intensity/Rocky Mountain	Lime
<i>Phase 3</i>	
Contemporary Swing Fittings	Navy
Accessory	Lemon
1 Color Extruded/Flat	Orange
<u>Overridden Colors</u>	
<i>560-2589 COMET II</i>	
Accessory	Navy
<i>370-0829 PLEXUS OVERHEAD</i>	
Accessory	Lemon
<i>370-0830 PLEXUS HOLE CLIMBER</i>	
Accessory	Lime
<i>370-0831 PLEXUS RUNG CLIMBER</i>	
Accessory	Orange
<i>370-0833 PLEXUS STEP CLIMBER</i>	
Accessory	Orange
<i>370-0832 PLEXUS TANGLE CLIMBER</i>	
Accessory	Lime

# BURKE GENERATIONS WARRANTY®

BCI Burke Company, LLC ("Burke") warrants that all standard products are warranted to be free from defects in materials and workmanship, under normal use and service, for a period of one (1) year from the date of shipment.

## We stand behind our products.

In addition, the following products are warranted, under normal use and service from the date of shipment as follows:

- One Hundred (100) Year Limited Warranty on aluminum and steel upright posts (including Intensity®, Synergy®, Nucleus®, Voltage®, Little Buddies®, ELEVATE®, ACTIVATE®, INVIGORATE®) against structural failure due to corrosion, deterioration or workmanship.
- One Hundred (100) Year Limited Warranty on KoreKconnect® clamps against structural failure due to corrosion, deterioration or workmanship.
- One Hundred (100) Year Limited Warranty on Hardware (nuts, bolts, washers)
- One Hundred (100) Year Limited Warranty on bolt-through fastening and clamp systems (Synergy®, Intensity®, Nucleus®, Voltage®, Little Buddies®, ELEVATE®).
- Twenty-Five (25) Year Limited Warranty on spring assemblies and aluminum cast animals.
- Fifteen (15) Year Limited Warranty on structure platforms and decks, metal roofs, table tops, bench tops, railings and barriers against structural failure due to materials or workmanship.
- Fifteen (15) Year Limited Warranty on all plastic components including StoneBorders against structural failure due to materials or workmanship.
- Ten (10) Year Limited Warranty on ShadePlay® Canopies fabric, threads, and cables against degradation, cracking or material breakdown resulting from ultra-violet exposure, natural deterioration or manufacturing defects. This warranty is limited to the design loads as stated in the specifications.
- Ten (10) Year Limited Warranty on NaturePlay® Boulders and GFRC products against structural failure due to natural deterioration or workmanship. Natural wear, which may occur with any concrete product with age, is excluded from this warranty.
- Ten (10) Year Limited Warranty on Full Color Custom Signage against manufacturing defects that cause delamination or degradation of the sign. Full Color Custom Signs also carry a two (2) year warranty against premature fading of the print and graphics on the signs.
- Five (5) Year Limited Warranty on Intensity® and RopeVenture® cables and LEVEL X® flex bridge against premature wear due to natural deterioration or manufacturing defects. Determination of premature wear will be at the manufacturer's discretion.
- Five (5) Year Limited Warranty on moving parts, including swing components, against structural failure due to materials or workmanship.
- Five (5) Year Limited Warranty on PlayEnsemble® cables and mallets against defects in materials and workmanship.
- Three (3) Year Limited Warranty on electronic panel speakers, sound chips and circuit boards against electronic failure caused by manufacturing defects.

The warranty stated above is valid only if the equipment is erected in conformity with the layout plan and/or installation instructions furnished by BCI Burke Company, LLC using approved parts; have been maintained and inspected in accordance with BCI Burke Company, LLC instructions. Burke's liability and your exclusive remedy hereunder will be limited to repair or replacement of those parts found in Burke's reasonable judgment to be defective. Any claim made within the above stated warranty periods must be made promptly after discovery of the defect. A part is covered only for the original warranty period of the applicable part. Replacement parts carry the applicable warranty from the date of shipment of the replacement from Burke. After the expiration of the warranty period, you must pay for all parts, transportation and service charges.

Burke reserves the right to accept or reject any claim in whole or in part. Burke will not accept the return of any product without its prior written approval. Burke will assume transportation charges for shipment of the returned product if it is returned in strict compliance with Burke's written instructions.

**THE FOREGOING WARRANTIES ARE EXCLUSIVE AND IN LIEU OF ANY OTHER WARRANTY, EXPRESS OR IMPLIED, INCLUDING BUT NOT LIMITED TO ANY IMPLIED WARRANTY OR MERCHANTABILITY OR FITNESS FOR A PARTICULAR PURPOSE. IF THE FOREGOING DISCLAIMER OF ADDITIONAL WARRANTIES IS NOT GIVEN FULL FORCE AND EFFECT, ANY RESULTING ADDITIONAL WARRANTY SHALL BE LIMITED IN DURATION TO THE EXPRESS WARRANTIES AND BE OTHERWISE SUBJECT TO AND LIMITED BY THE TERMS OF BURKE'S PRODUCT WARRANTY. SOME STATES DO NOT ALLOW THE EXCLUSION OF CERTAIN IMPLIED WARRANTIES, SO THE ABOVE LIMITATION MAY NOT APPLY TO YOU.**

**Warranty Exclusions:** The above stated warranties do not cover: "cosmetic" defects, such as scratches, dents, marring, or fading; damage due to incorrect installation, vandalism, misuse, accident, wear and tear from normal use, exposure to extreme weather; immersion in salt or chlorine water, unauthorized repair or modification, abnormal use, lack of maintenance, or other cause not within Burke's control; and

**Limitation of Remedies:** Burke is not liable for consequential or incidental damages, including but not limited to labor costs or lost profits resulting from the use of or inability to use the products or from the products being incorporated in or becoming a component of any other product. If, after a reasonable number of repeated efforts, Burke is unable to repair or replace a defective or nonconforming product, Burke shall have the option to accept return of the product, or part thereof, if such does not substantially impair its value, and return the purchase price as the buyer's entire and exclusive remedy. Without limiting the generality of the foregoing, Burke will not be responsible for labor costs involved in the removal of products or the installation of replacement products. Some states do not allow the exclusion of incidental damages, so the above exclusion may not apply to you.

The environment near a saltwater coast can be extremely corrosive. Some corrosion and/or deterioration is considered "normal wear" in this environment. Product installed within 500 yards of a saltwater shoreline will only be covered for half the period of the standard product warranty, up to a maximum of five years, for defects caused by corrosion. Products installed in direct contact with saltwater or that are subjected to salt spray are not covered by the standard warranty for any defects caused by corrosion.

Contact your local Burke Representative for warranty information regarding Burke Turf® and Burke Tile products.

## Terms of Sale

**Pricing:** Prices published in this catalog are in USD, are approximate and do not include shipping & handling, surfacing, installation nor applicable taxes. All prices are subject to change without notice. Contact your Burke representative for current pricing. Payments are to be made in USD.

**Weights:** Weights are approximate and may vary with actual orders.

**Installation:** All equipment is shipped unassembled. For a list of factory-certified installers in your area, please contact your Burke representative.

**Specifications:** Product specifications in this catalog were correct at the time of publication. However, product improvements are ongoing at Burke, and we reserve the right to change or discontinue specifications without notice.

**Loss or Damage in Transit:** A signed bill of lading is our receipt from a carrier that our shipment to you was complete and in good condition upon arrival. Before you sign, please check the Bill of Lading carefully when the shipment arrives to make sure nothing is missing and there are no damages. Once the shipment leaves our plant, we are no longer responsible for any damage, loss or shortage.

For more information regarding the warranty, call Customer Service at 920-921-9220 or 1-800-356-2070.

01/2023