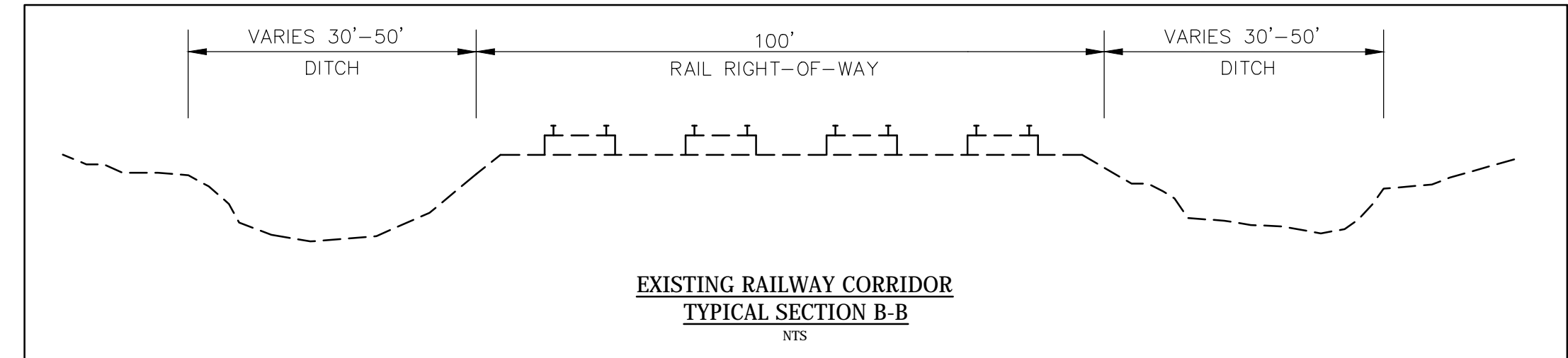
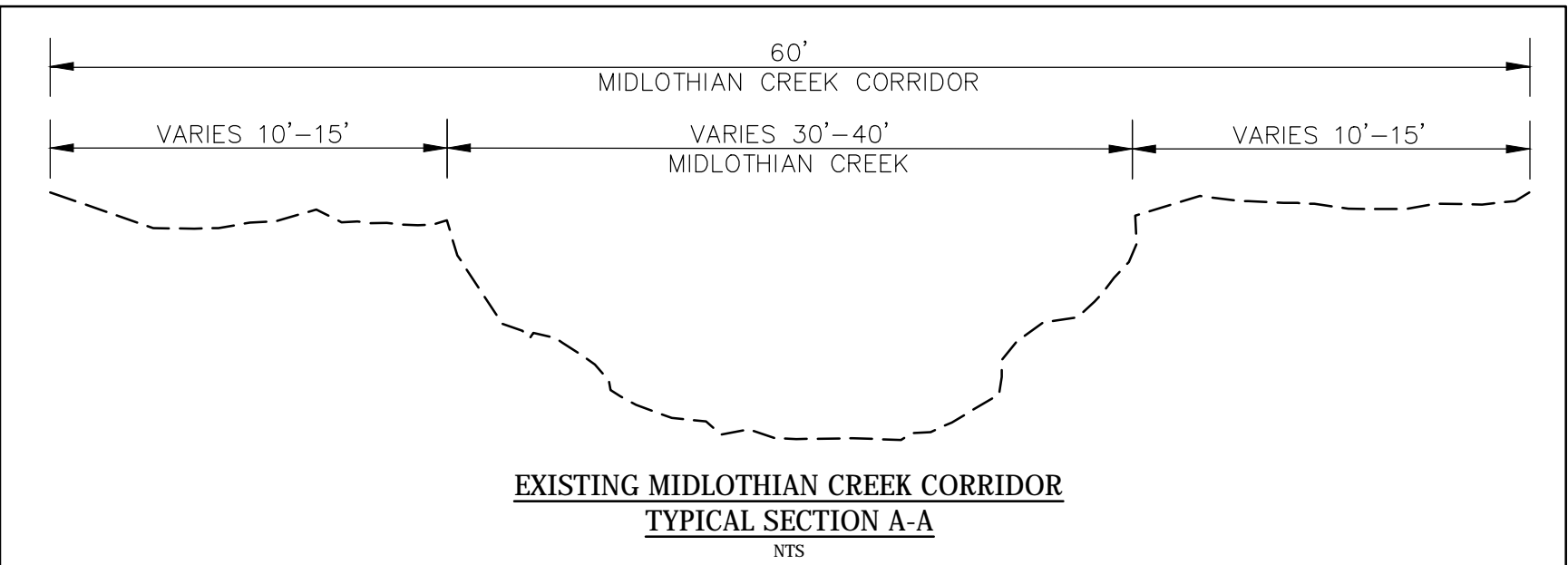


- LEGEND**
- MUNICIPAL BOUNDARY
 - - - PROPERTY LINE
 - MIDLOTHIAN CREEK
 - - - EXISTING BIKE ROUTE
 - - - EXISTING TRAIL
 - FLOW ARROW
 - WETLANDS
 - FLOODPLAIN
 - MUNICIPALITY OWNED LAND
 - UTILITY / RAILROAD EASEMENT
 - SEDIMENT SAMPLE LOCATION (03/07/13)



- INDEX OF SHEETS**
- SHEET 1 - MIDLOTHIAN CREEK EXISTING CONDITIONS
 - SHEET 2 - MIDLOTHIAN CREEK GREEN INFRASTRUCTURE OPPORTUNITIES
 - SHEET 3 - MIDLOTHIAN CREEK GREEN INFRASTRUCTURE OPPORTUNITIES - WEST BMP DETAILS
 - SHEET 4 - MIDLOTHIAN CREEK GREEN INFRASTRUCTURE OPPORTUNITIES - EAST BMP DETAILS
 - SHEET 5 - GREEN INFRASTRUCTURE CONCEPT PLANS

PREPARED FOR
CITY OF BLUE ISLAND
 13051 GREENWOOD AVENUE
 BLUE ISLAND, IL 60406

MIDLOTHIAN CREEK
 EXISTING CONDITIONS
 BLUE ISLAND, ILLINOIS

REVISION DESCRIPTION	DATE	NO.

**WEAVER
BOOS
CONSULTANTS**

35 EAST WACKER DRIVE
 CHICAGO, ILLINOIS
 (312)922-1030

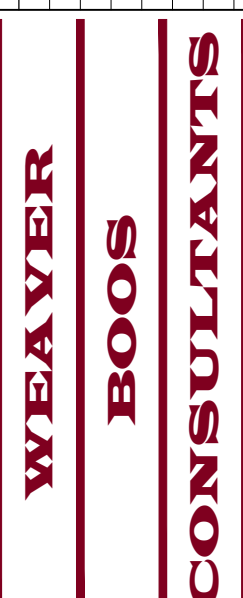
CLERMONT, FL COLUMBUS, OH
 DENVER, CO HOUSTON, TX
 GRAND RAPIDS, MI GREENVILLE, TN
 NAPERVILLE, IL SOUTH BEND, IN
 SPRINGFIELD, IL ST. LOUIS, MO
 www.weaverboos.com

REUSE OF DOCUMENTS
 This document, and the design incorporated herein, is an incorporation of professional services provided by Weaver Boos Consultants North Central, LLC, and is not to be used by other parties without the written authorization of Weaver Boos Consultants North Central, LLC.

DRAWN BY: JBE
 DESIGNED BY: JBE
 REVIEWED BY: EVN
 DATE: 01/10/2013
 FILE: 3199-301-32
 CAD:

SHEET 1 OF 6

REVISION DESCRIPTION	DATE	NO.



35 EAST WACKER DRIVE
 CHICAGO, ILLINOIS
 (312)922-1030

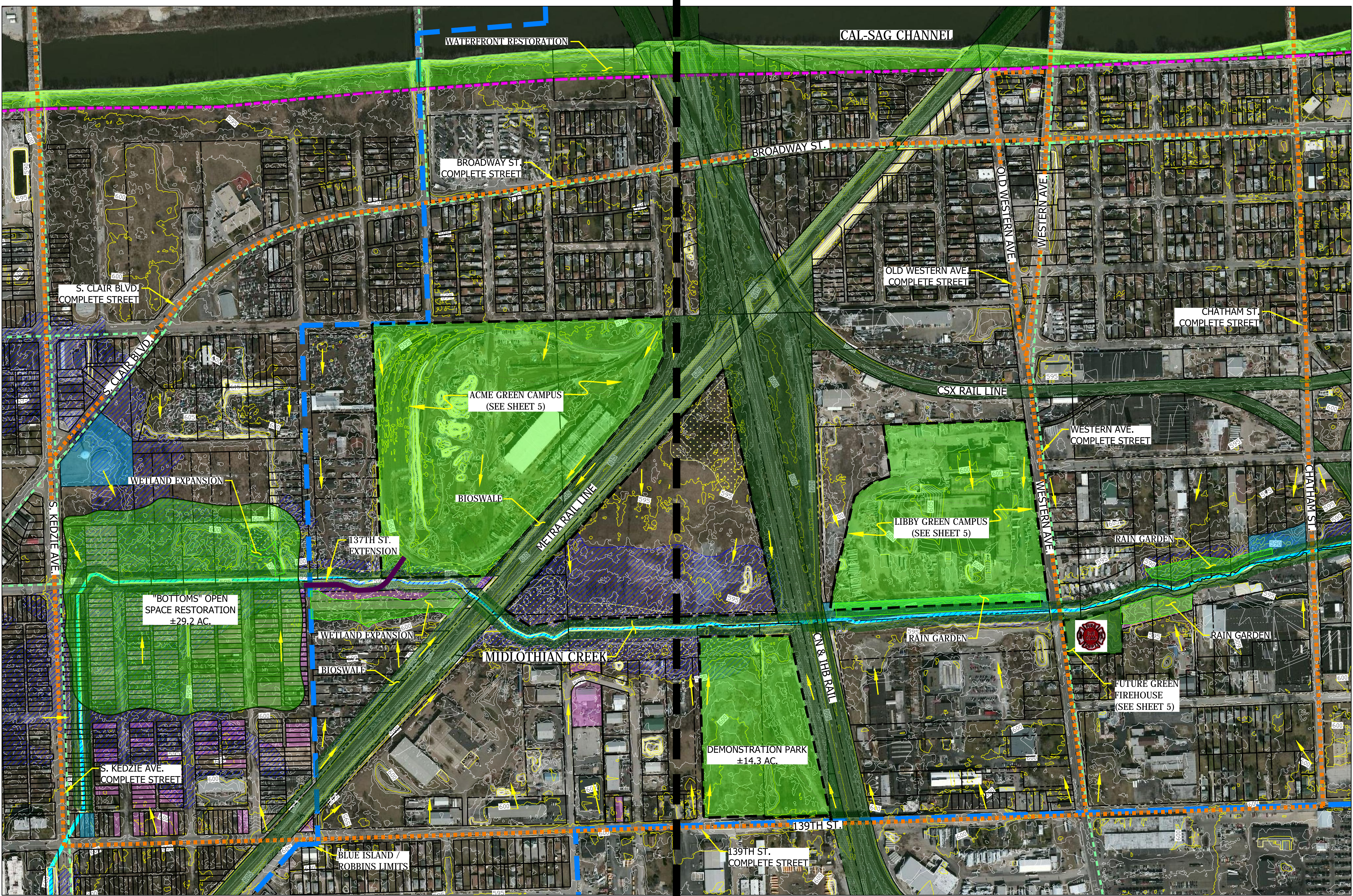
CLEVELAND, OH COLUMBUS, OH
 DENVER, CO HOUSTON, TX
 GRAND RAPIDS, MI GREENVILLE, TN
 NAPERVILLE, IL SOUTH BEND, IN
 SPRINGFIELD, IL ST. LOUIS, MO
 www.weaverboos.com

REUSE OF DOCUMENTS
 This document, and the design incorporated herein, is an incorporation of professional services provided by Weaver Boos Consultants North Central, LLC, and is not to be used by other parties without the written authorization of Weaver Boos Consultants North Central, LLC.

DRAWN BY: JBE
 DESIGNED BY: JBE
 REVIEWED BY: EVN
 DATE: 01/21/2013
 FILE: 3199-301-32
 CAD:

MATCHLINE WEST BMP
 DETAILS SEE SHEET 3

MATCHLINE EAST BMP
 DETAILS SEE SHEET 4



BENEFITS OF GREEN INFRASTRUCTURE BMPs

Water Quality:
 Green Infrastructure BMPs infiltrate runoff close to its source and help prevent pollutants from being discharged into the sewer system or Midlothian Creek. The native plantings within the BMPs filter out harmful pollutants such as Biochemical Oxygen Demand (BOD), Chemical Oxygen Demand (COD), Total Suspended Solids (TSS), Total Nitrogen, Total Phosphorous, and others.

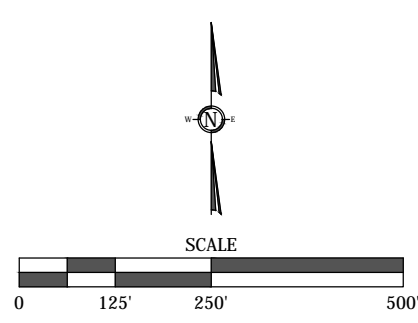
Groundwater Recharge:
 Due to infiltration capabilities of Green Infrastructure, groundwater aquifers are replenished. Groundwater contributes approximately 40% of the water needed to maintain normal base flows in rivers and streams. Midlothian Creek will benefit the most from groundwater recharge as will the Cal-Sag Channel.

Reduced Runoff:
 Green Infrastructure reduces stormwater peak flows and volumes by utilizing natural retention and absorption capabilities of vegetation and soils. This reduces the volume of water entering the sewer system or waterways and could help mitigate nearby flooding problems.

Wildlife Habitat:
 Green Infrastructure BMPs will incorporate native vegetation and create wetlands. This will attract wildlife to the area.

Human Health:
 Studies suggest that Green Infrastructure can have a positive impact on human health. Recent research has linked the presence of trees, plants, and green space to reduced levels of crime and violence, a stronger sense of community, and improved academic performance.

Increased Land Values:
 Case studies suggest that Green Infrastructure can increase surrounding property values. Green Infrastructure can beautify aesthetically distasteful vacant lots and create open space parks for the public to enjoy.



LEGEND

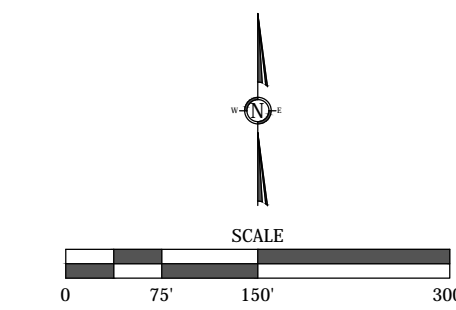
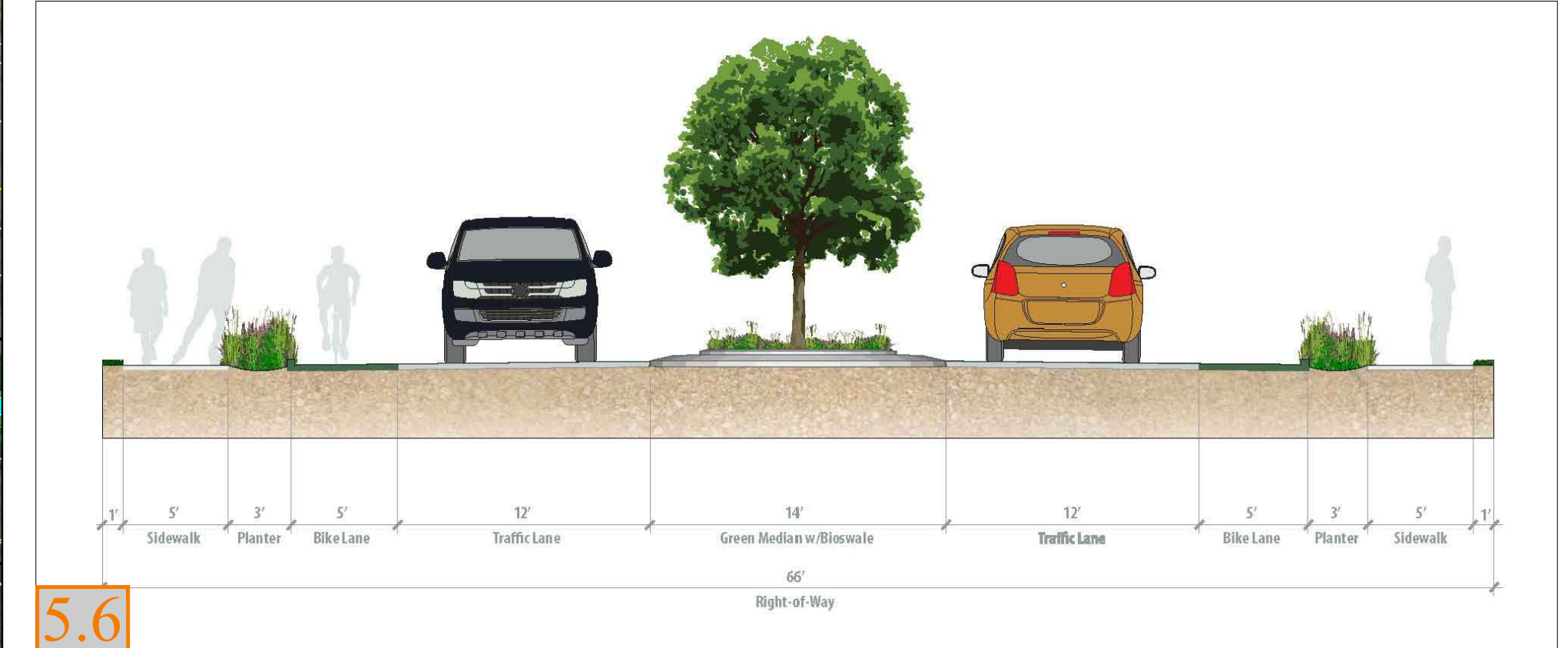
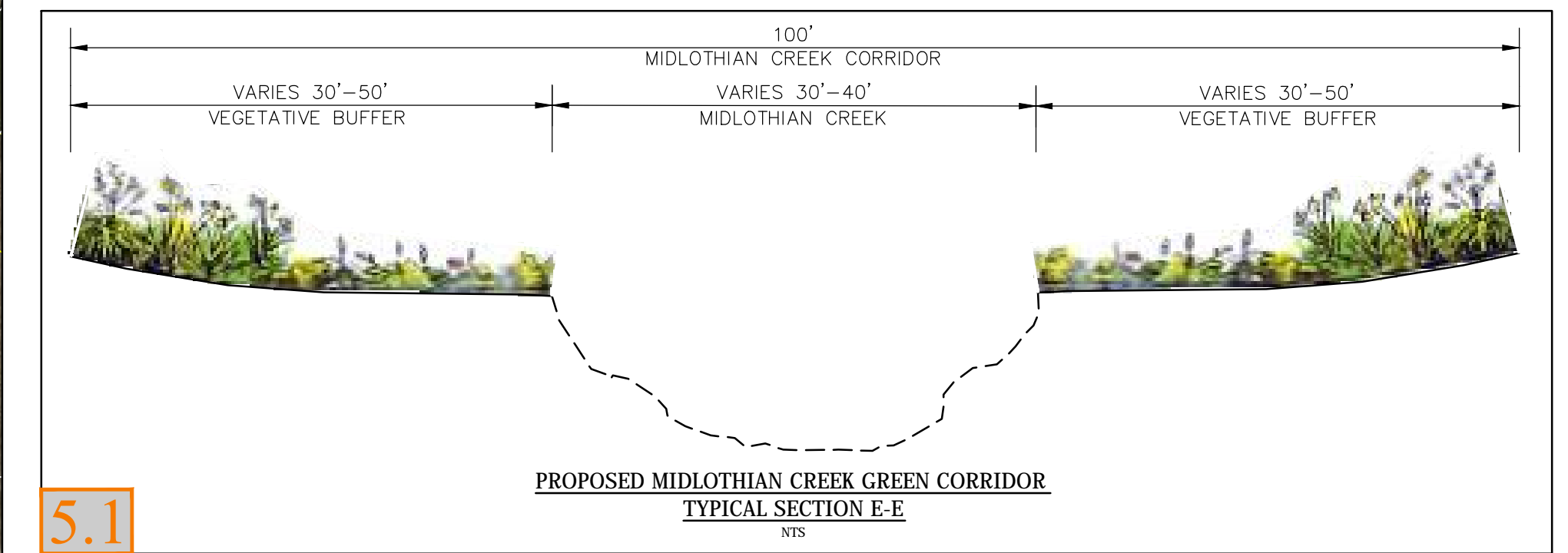
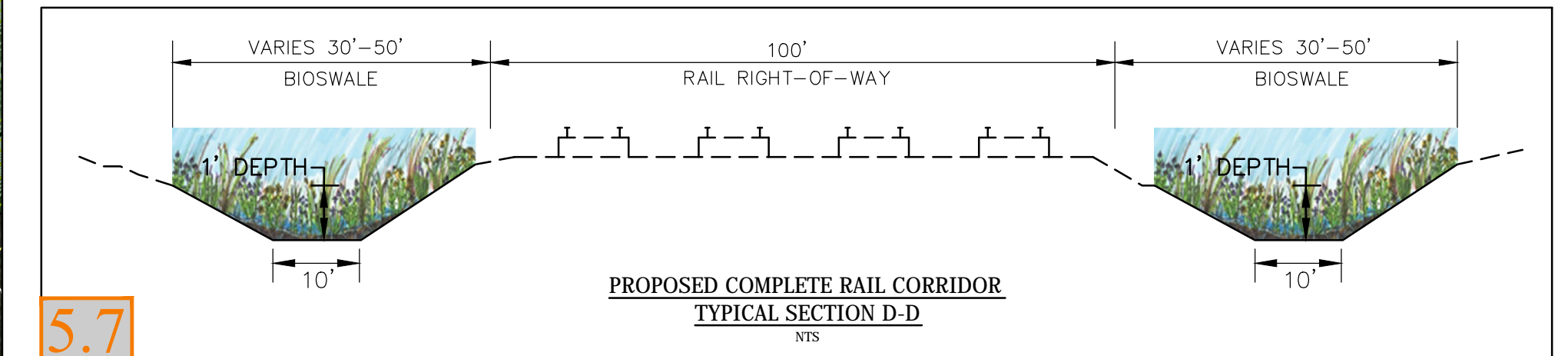
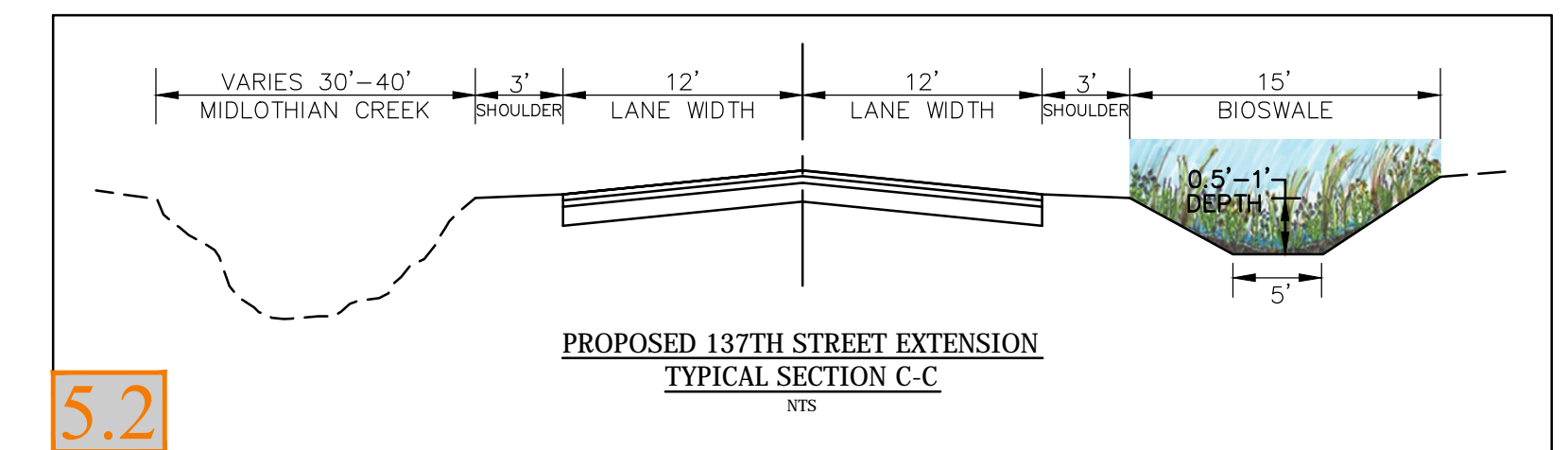
	MUNICIPAL BOUNDARY
	PROPERTY LINE
	MIDLOTHIAN CREEK
	EXISTING BIKE ROUTE
	EXISTING TRAIL
	FLOW ARROW
	WETLANDS
	FLOODPLAIN
	MUNICIPALITY OWNED LAND
	PROPOSED ROAD
	PROPOSED COMPLETE STREETS CORRIDOR
	PROPOSED GREEN CORRIDOR
	GREEN INFRASTRUCTURE OPPORTUNITY

MATCHLINE WEST BMP
 DETAILS SEE SHEET 3

MATCHLINE EAST BMP
 DETAILS SEE SHEET 4

MATCHLINE WEST BMP DETAILS - THIS SHEET

MATCHLINE EAST BMP DETAILS SEE SHEET 4



- LEGEND**
- MUNICIPAL BOUNDARY
 - EXISTING WETLANDS
 - PROPOSED ROAD
 - PROPOSED COMPLETE STREETS CORRIDOR
 - PROPOSED GREEN CORRIDOR
 - GREEN INFRASTRUCTURE
 - WETLANDS EXPANSION

5.1 SEE CONTENTS OF BLUE ISLAND MIDLOTHIAN CREEK GREEN INFRASTRUCTURE REPORT PREPARED BY WEAVER BOOS CONSULTANTS FOR ADDITIONAL INFORMATION.

PREPARED FOR
CITY OF BLUE ISLAND
13051 GREENWOOD AVENUE
BLUE ISLAND, IL 60406

MIDLOTHIAN CREEK GREEN
INFRASTRUCTURE OPPORTUNITIES
- WEST BMP DETAILS
MIDLOTHIAN, ILLINOIS

REVISION DESCRIPTION

DATE

No.

WEAVER BOOS CONSULTANTS

35 EAST WACKER DRIVE
CHICAGO, ILLINOIS
(312)922-1030

CLEVELAND, OH COLUMBUS, OH
DENVER, CO HOUSTON, TX
GRAND RAPIDS, MI GREENVILLE, TN
NAPERVILLE, IL SOUTH BEND, IN
SPRINGFIELD, IL ST. LOUIS, MO
www.weaverboos.com

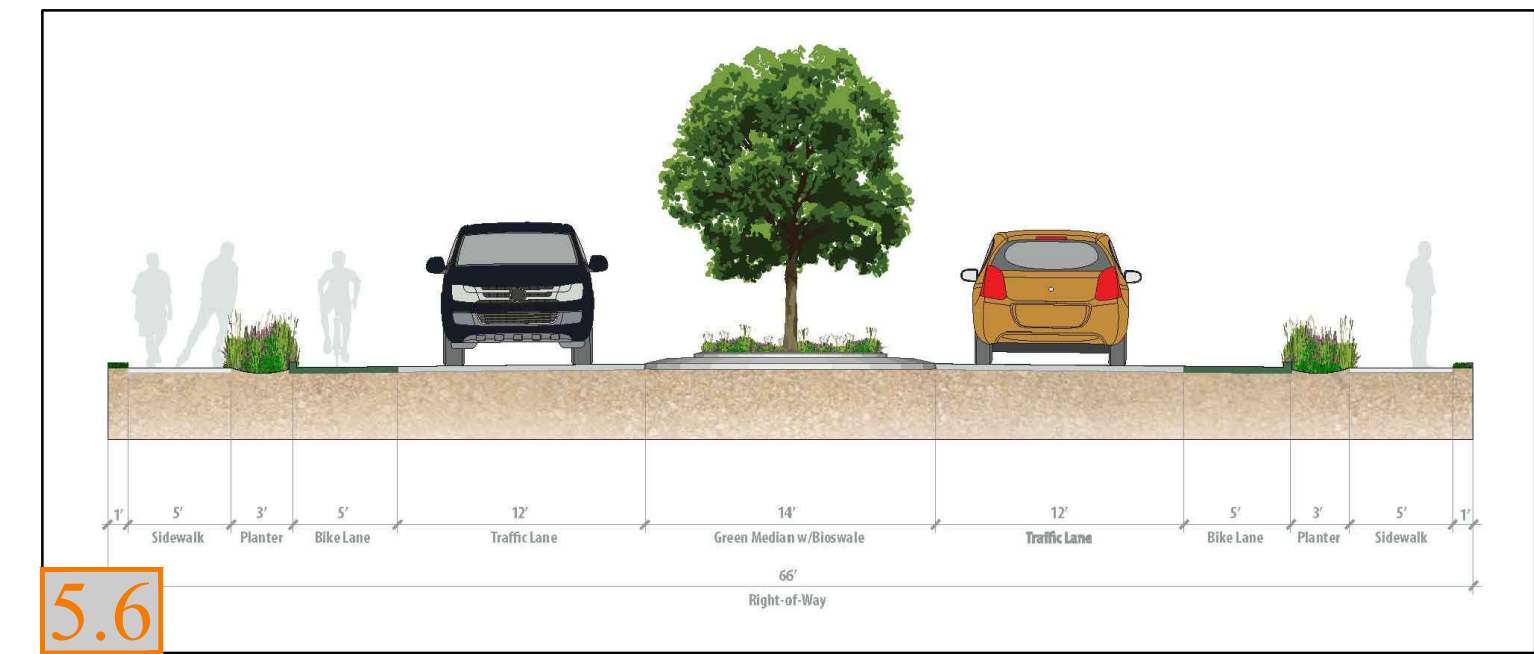
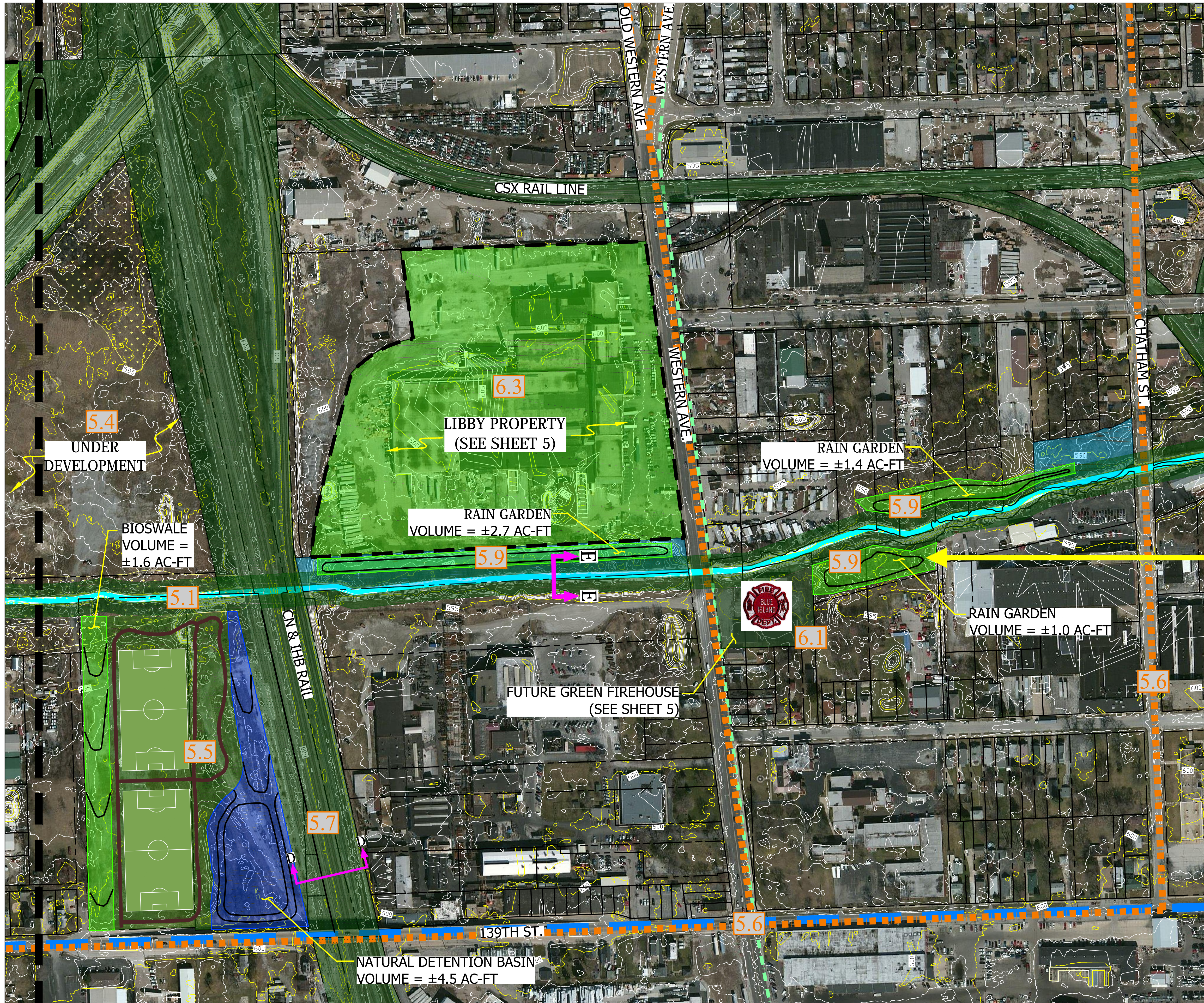
REUSE OF DOCUMENTS
This document, and the design incorporated herein, is an instrument of professional service prepared by Weaver Boos Consultants North Central, LLC, and is to be used by the client in its project, without the written authorization of Weaver Boos Consultants North Central, LLC.

DRAWN BY: JBE
DESIGNED BY: JBE
REVIEWED BY: EVN
DATE: 01/21/2013
FILE: 3199-301-32
CAD:

SHEET 3 OF 6

MATCHLINE WEST BMP DETAILS - THIS SHEET

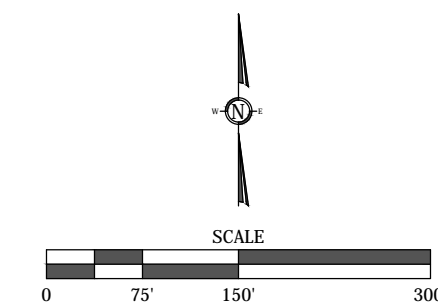
MATCHLINE EAST BMP DETAILS - SEE SHEET 4



5.6 COMPLETE STREETS CORRIDOR CONCEPT



5.9 RAIN GARDEN TRIBUTARY TO CREEK EXAMPLE

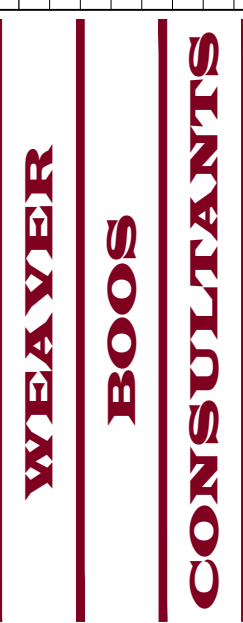


LEGEND

- MUNICIPAL BOUNDARY
- EXISTING WETLANDS
- PROPOSED COMPLETE STREETS CORRIDOR
- PROPOSED GREEN CORRIDOR
- RAIN GARDEN / BIOSWALE
- NATURAL DETENTION / WETLANDS EXPANSION

5.1 SEE CONTENTS OF BLUE ISLAND MIDLOTHIAN CREEK GREEN INFRASTRUCTURE REPORT PREPARED BY WEAVER BOOS CONSULTANTS FOR ADDITIONAL INFORMATION.

REVISION DESCRIPTION	DATE	No.



35 EAST WACKER DRIVE
CHICAGO, ILLINOIS
(312)922-1030

CLEVELAND, OH COLUMBUS, OH
DENVER, CO HOUSTON, TX
GRAND RAPIDS, MI GREENVILLE, TN
NAPERVILLE, IL SOUTH BEND, IN
SPRINGFIELD, IL ST. LOUIS, MO

www.weaverboos.com

This document, and the design incorporated herein, is an instrument of professional service, prepared by Weaver Boos Consultants North Central, LLC, and is to be used by the client in its entirety, without the written authorization of Weaver Boos Consultants North Central, LLC.

DRAWN BY:	JBE
DESIGNED BY:	JBE
REVIEWED BY:	EVN
DATE:	01/21/2013
FILE:	3199-301-32
CAD:	

