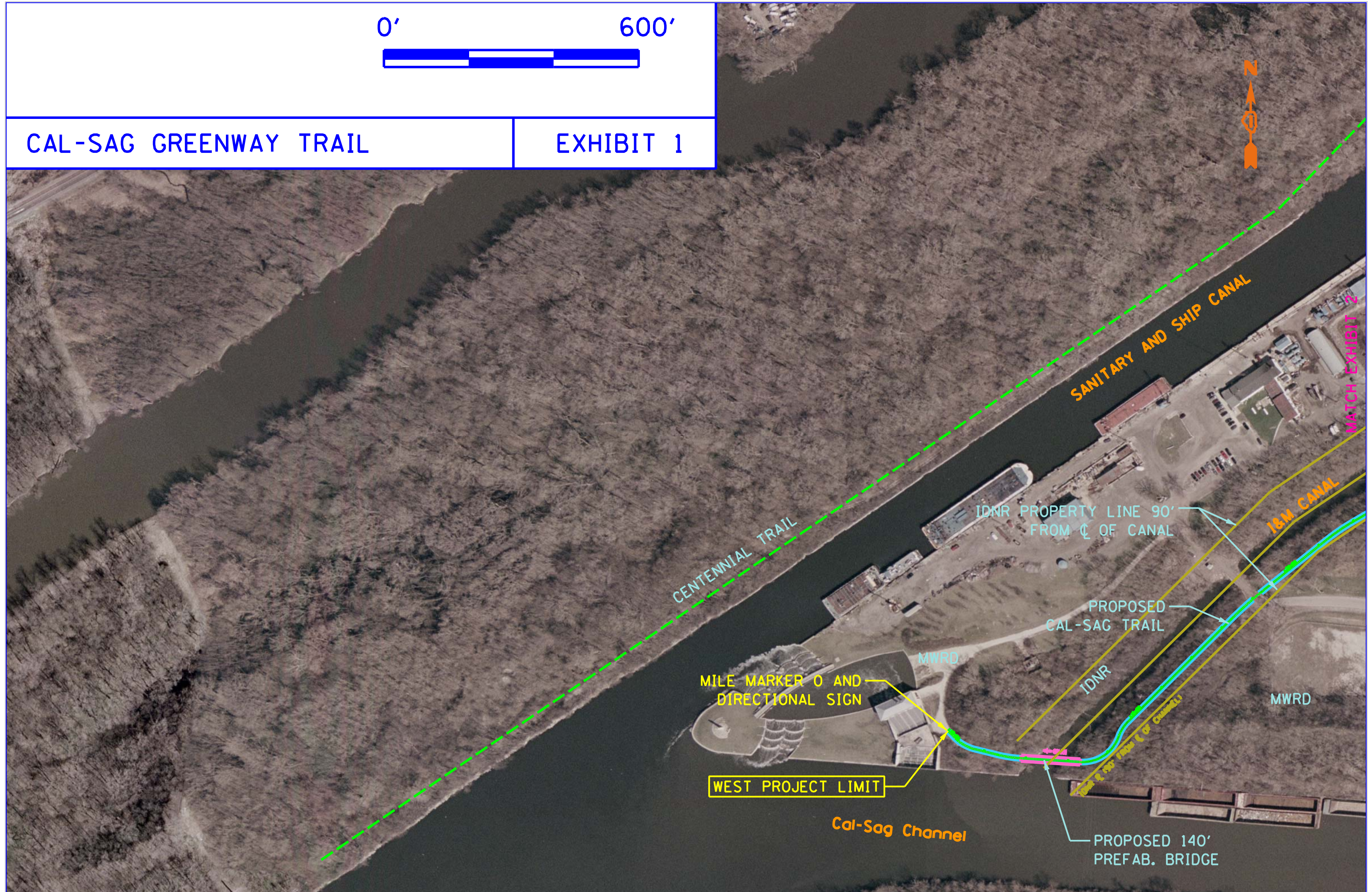


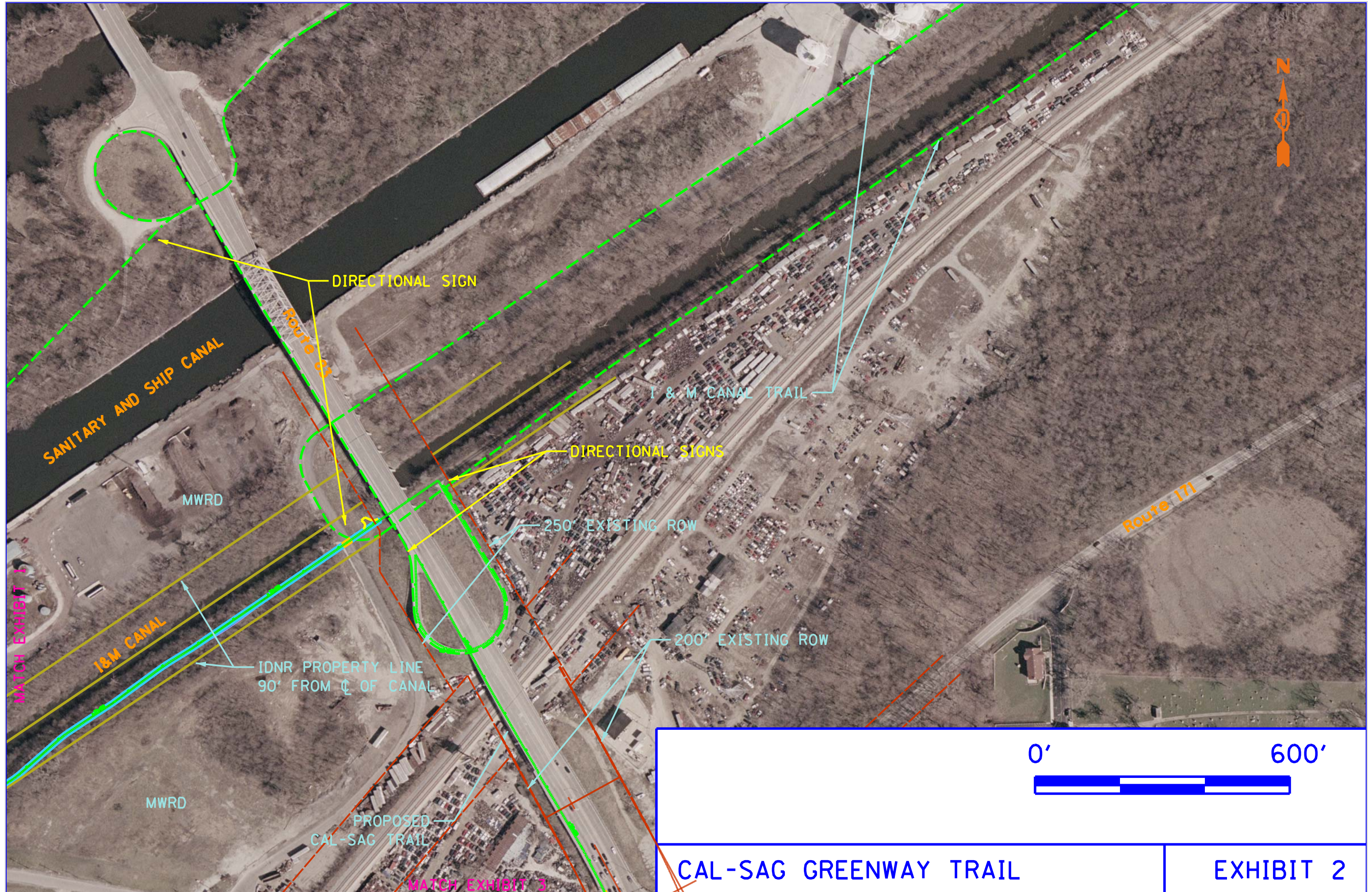
0' 600'



# CAL-SAG GREENWAY TRAIL

# EXHIBIT 1





CAL-SAG GREENWAY TRAIL

EXHIBIT 2

MATCH EXHIBIT 2

Grant Rd

MWRD

0'

600'



# CAL-SAG GREENWAY TRAIL

# EXHIBIT 3



PROPOSED CAL-SAG TRAIL

Cal-Sag Channel

MWRD

MILE MARKER 1 SIGN

DIRECTIONAL SIGN

Route 83

FOREST PRESERVE DISTRICT OF COOK COUNTY

PROPOSED CAL-SAG TRAIL (ON EXISTING DRIVE)

DIRECTIONAL SIGN

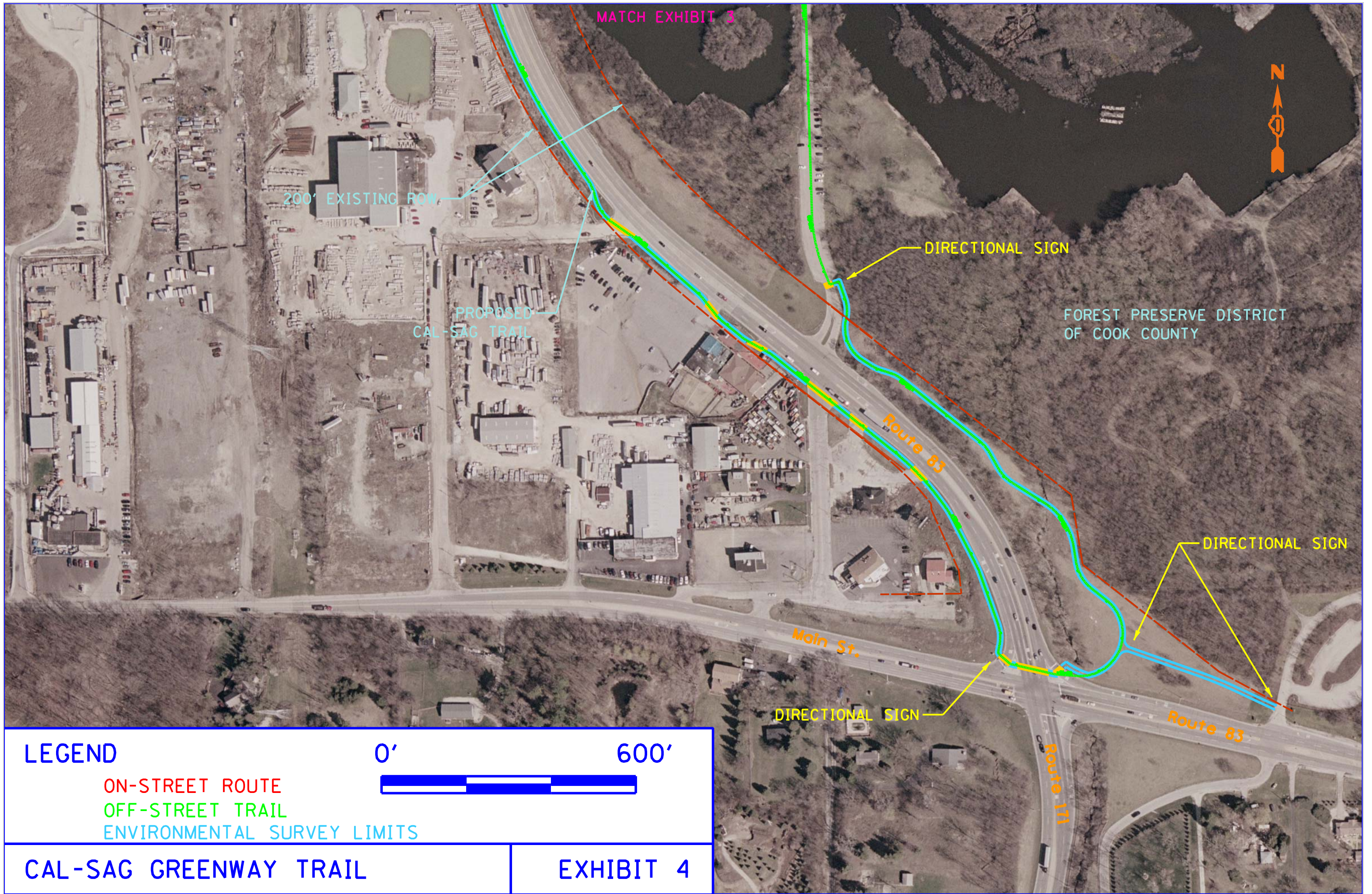
FOREST PRESERVE DISTRICT OF COOK COUNTY

200' EXISTING ROW

MILE MARKER 2 SIGN

MATCH EXHIBIT 4

MATCH EXHIBIT 5



MATCH EXHIBIT 3

200' EXISTING ROW

PROPOSED CAL-SAG TRAIL

DIRECTIONAL SIGN

FOREST PRESERVE DISTRICT OF COOK COUNTY

DIRECTIONAL SIGN

DIRECTIONAL SIGN

**LEGEND**

ON-STREET ROUTE

OFF-STREET TRAIL

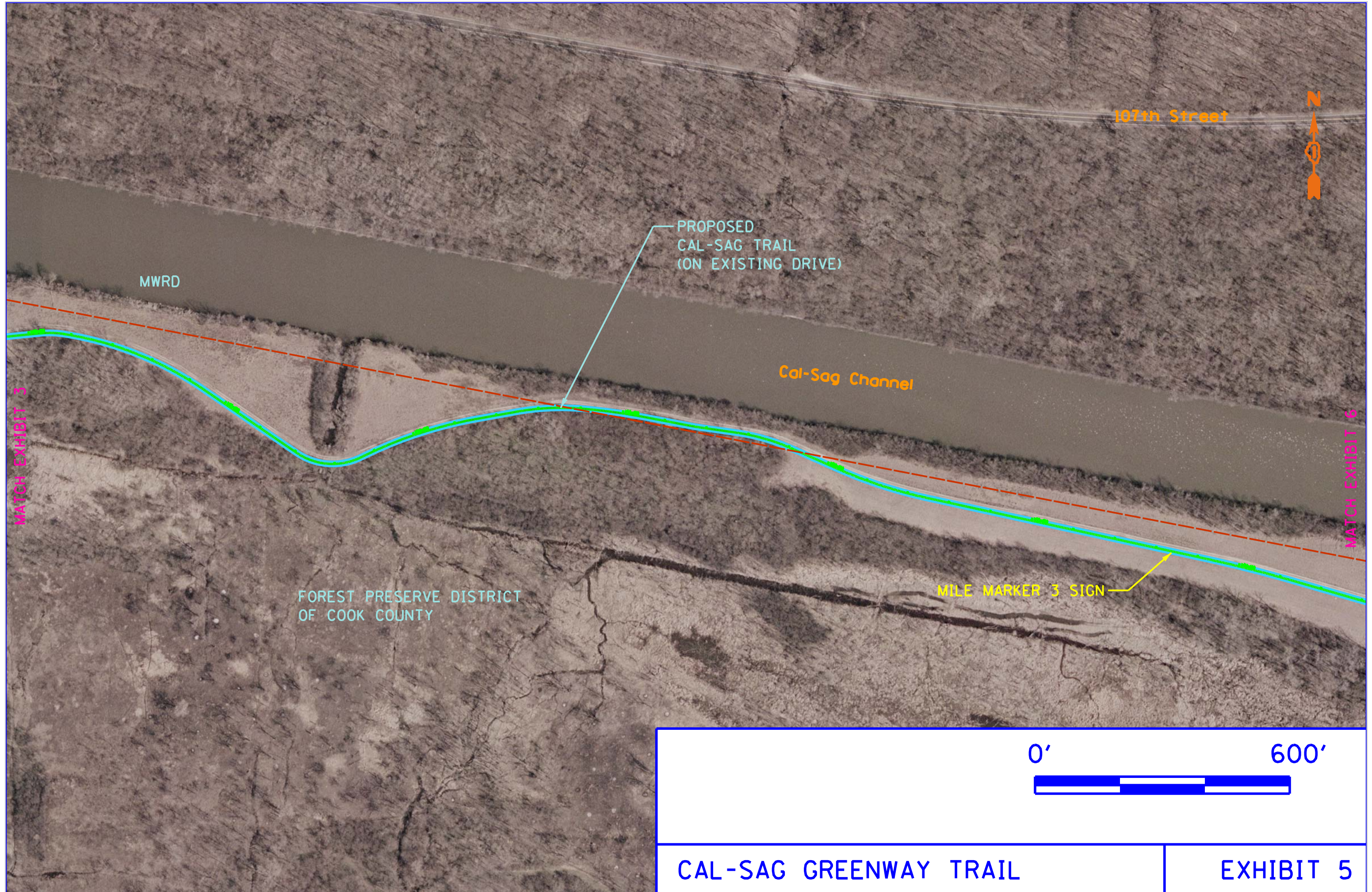
ENVIRONMENTAL SURVEY LIMITS

0' 600'



**CAL-SAG GREENWAY TRAIL**

**EXHIBIT 4**



107th Street



PROPOSED  
CAL-SAG TRAIL  
(ON EXISTING DRIVE)

MWRD

Cal-Sag Channel

FOREST PRESERVE DISTRICT  
OF COOK COUNTY

MILE MARKER 3 SIGN

MATCH EXHIBIT 3

MATCH EXHIBIT 6

0' 600'



|                        |           |
|------------------------|-----------|
| CAL-SAG GREENWAY TRAIL | EXHIBIT 5 |
|------------------------|-----------|

MATCH EXHIBIT 5



MWRD

PROPOSED  
CAL-SAG TRAIL  
(ON EXISTING DRIVE)

Cal-Sag Channel

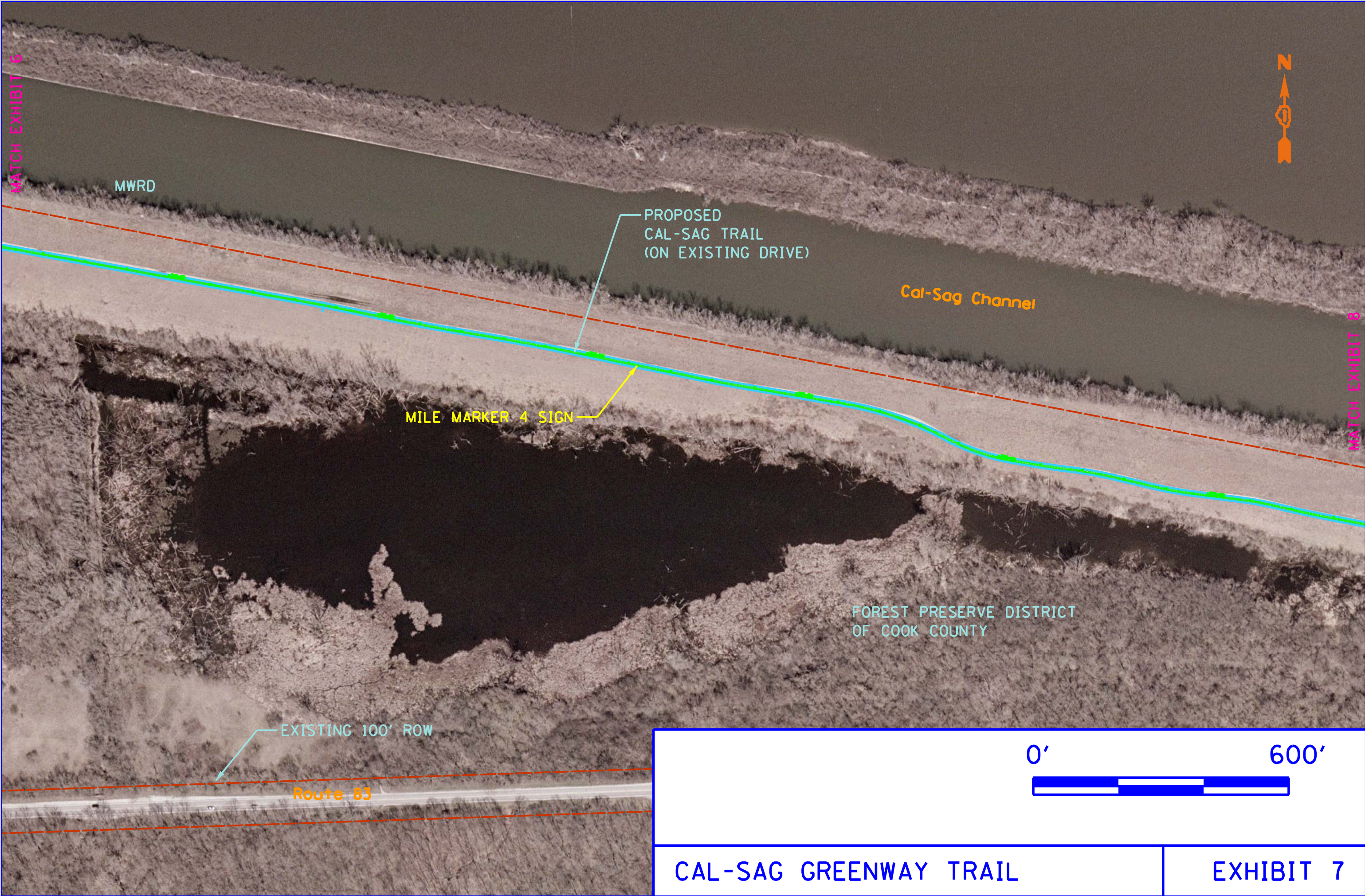
MATCH EXHIBIT 7

FOREST PRESERVE DISTRICT  
OF COOK COUNTY



CAL-SAG GREENWAY TRAIL

EXHIBIT 6



MATCH EXHIBIT 6

MATCH EXHIBIT 8

MWRD

PROPOSED CAL-SAG TRAIL (ON EXISTING DRIVE)

Cal-Sag Channel

MILE MARKER 4 SIGN

FOREST PRESERVE DISTRICT OF COOK COUNTY

EXISTING 100' ROW

Route 83



CAL-SAG GREENWAY TRAIL

EXHIBIT 7



MATCH EXHIBIT 7

MATCH EXHIBIT 9

MWRD

PROPOSED  
CAL-SAG TRAIL  
(ON EXISTING DRIVE)

Cal-Sag Channel

FOREST PRESERVE DISTRICT  
OF COOK COUNTY

FOREST PRESERVE DISTRICT  
OF COOK COUNTY

Route 83

EXISTING 100' ROW

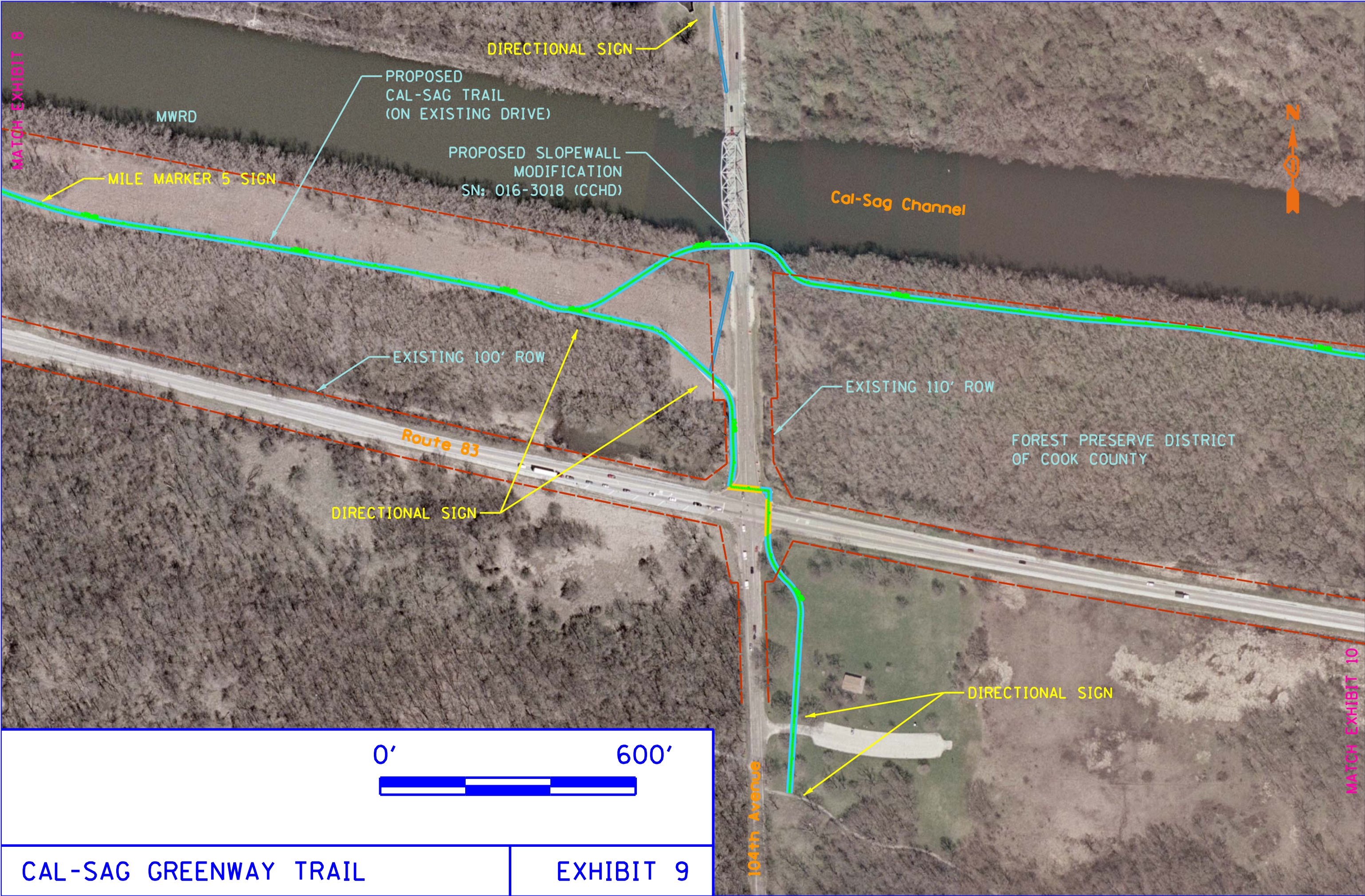
0' 600'



CAL-SAG GREENWAY TRAIL

EXHIBIT 8





MATCH EXHIBIT 8

MATCH EXHIBIT 10

CAL-SAG GREENWAY TRAIL

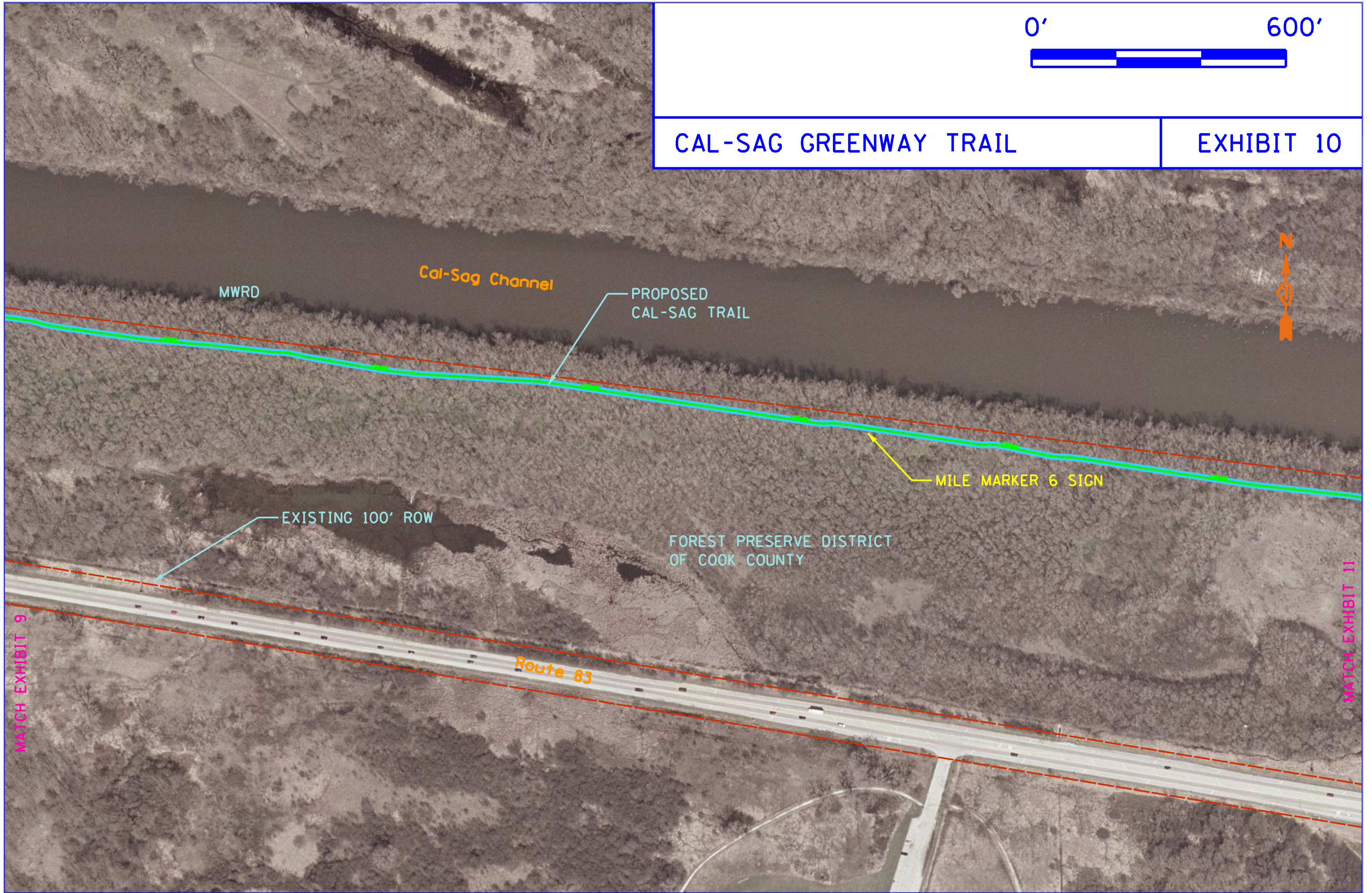
EXHIBIT 9

0' 600'



CAL-SAG GREENWAY TRAIL

EXHIBIT 10



MWRD

Cal-Sag Channel

PROPOSED CAL-SAG TRAIL



MILE MARKER 6 SIGN

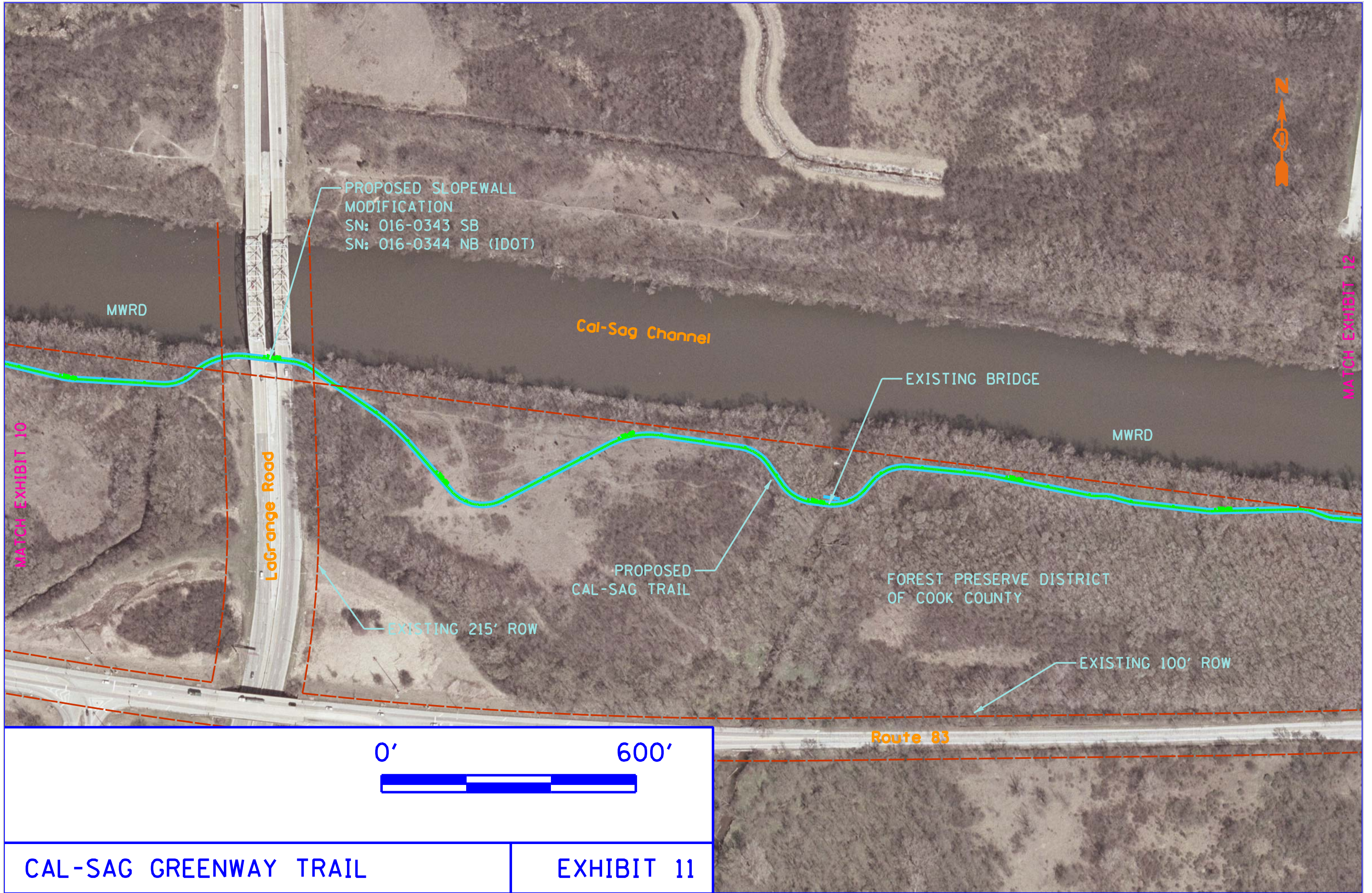
EXISTING 100' ROW

FOREST PRESERVE DISTRICT OF COOK COUNTY

Route 83

MATCH EXHIBIT 9

MATCH EXHIBIT 11

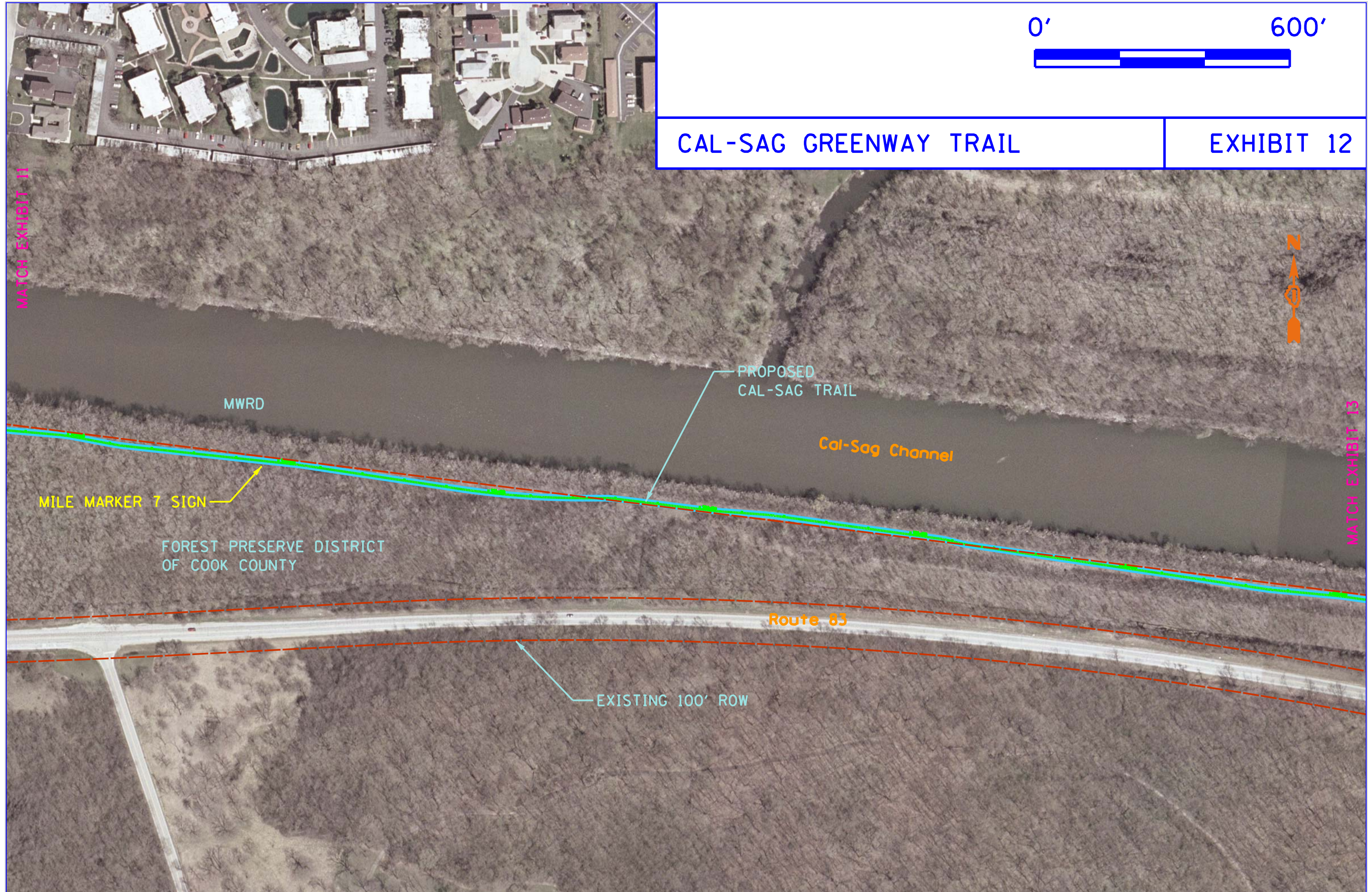


CAL-SAG GREENWAY TRAIL

EXHIBIT 11

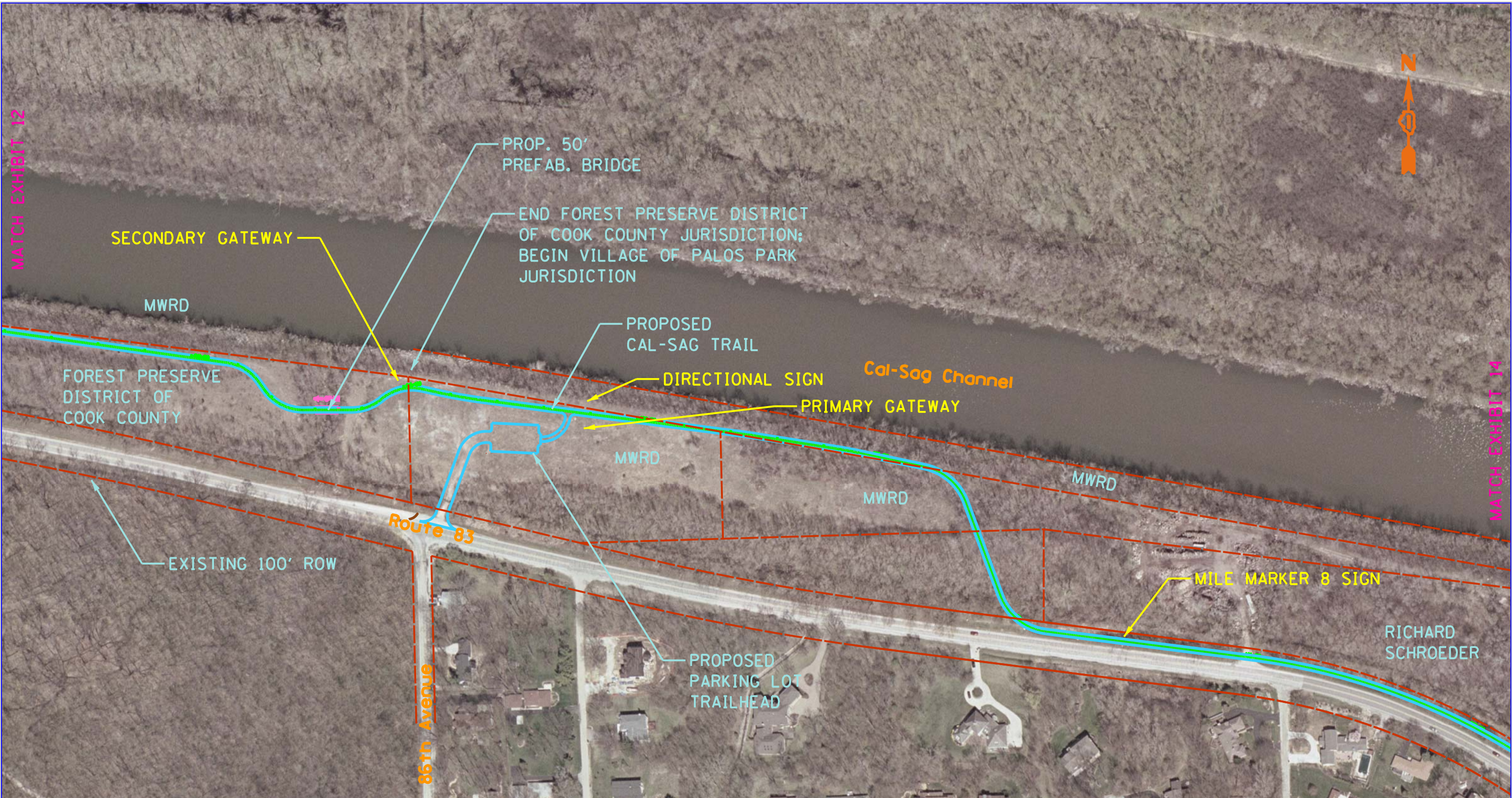


CAL-SAG GREENWAY TRAIL EXHIBIT 12



MATCH EXHIBIT 12

MATCH EXHIBIT 14



CAL-SAG GREENWAY TRAIL

EXHIBIT 13

0' 600'



# CAL-SAG GREENWAY TRAIL

# EXHIBIT 14

MATCH EXHIBIT 13



Cal-Sag Channel

RICHARD SCHROEDER

SN: 016-0464 (IDOT)

MWRD

PROPOSED CAL-SAG TRAIL

PROPOSED PERMANENT EASEMENT

DIRECTIONAL SIGN

PROPOSED CAL-SAG TRAIL

Southwest Highway

MILE MARKER 9 SIGN

EXISTING 100' ROW

Route 83

EDELWEISS LN.

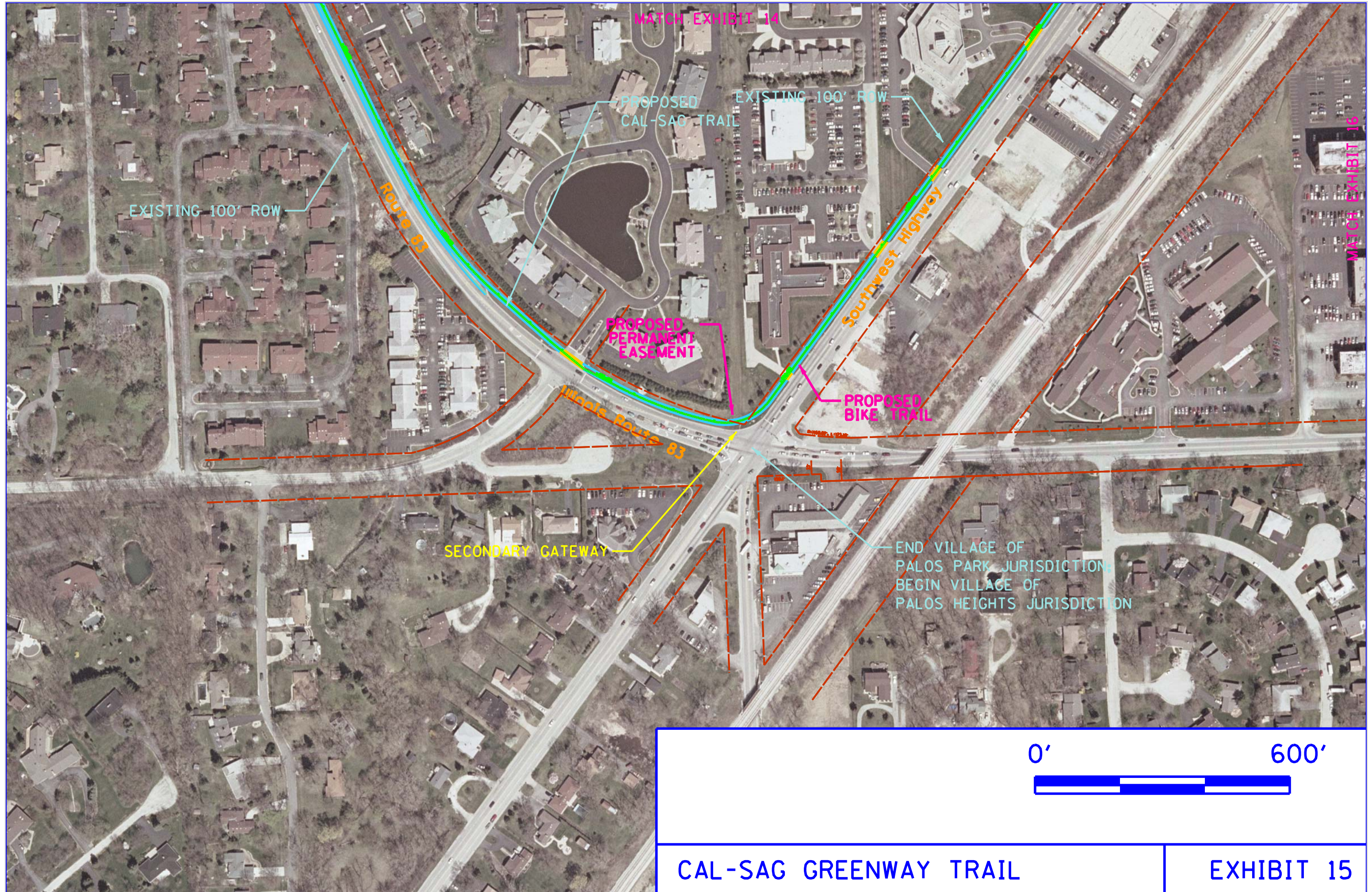
LIGHTHOUSE LN.

EXISTING 100' ROW

DIRECTIONAL SIGN

MATCH EXHIBIT 16

MATCH EXHIBIT 15



MATCH EXHIBIT 14

MATCH EXHIBIT 15

EXISTING 100' ROW

PROPOSED CAL-SAG TRAIL

EXISTING 100' ROW

Route 83

Southwest Highway

PROPOSED PERMANENT EASEMENT

PROPOSED BIKE TRAIL

Illinois Route 83

SECONDARY GATEWAY

END VILLAGE OF PALOS PARK JURISDICTION  
BEGIN VILLAGE OF PALOS HEIGHTS JURISDICTION

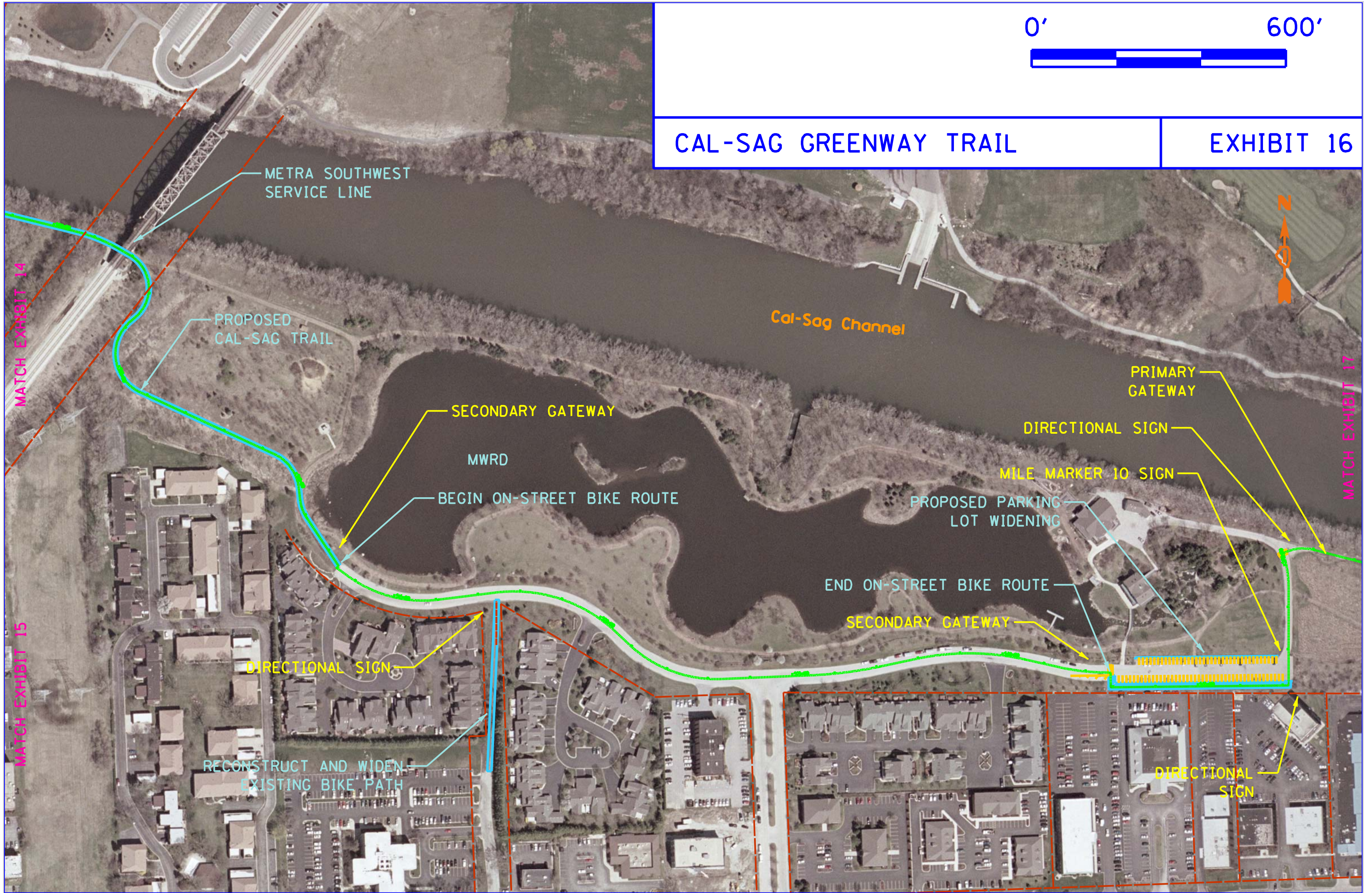


D9129807-Exhibits\_Wayfinding.dgn 9/17/2012 11:36:38 AM



# CAL-SAG GREENWAY TRAIL

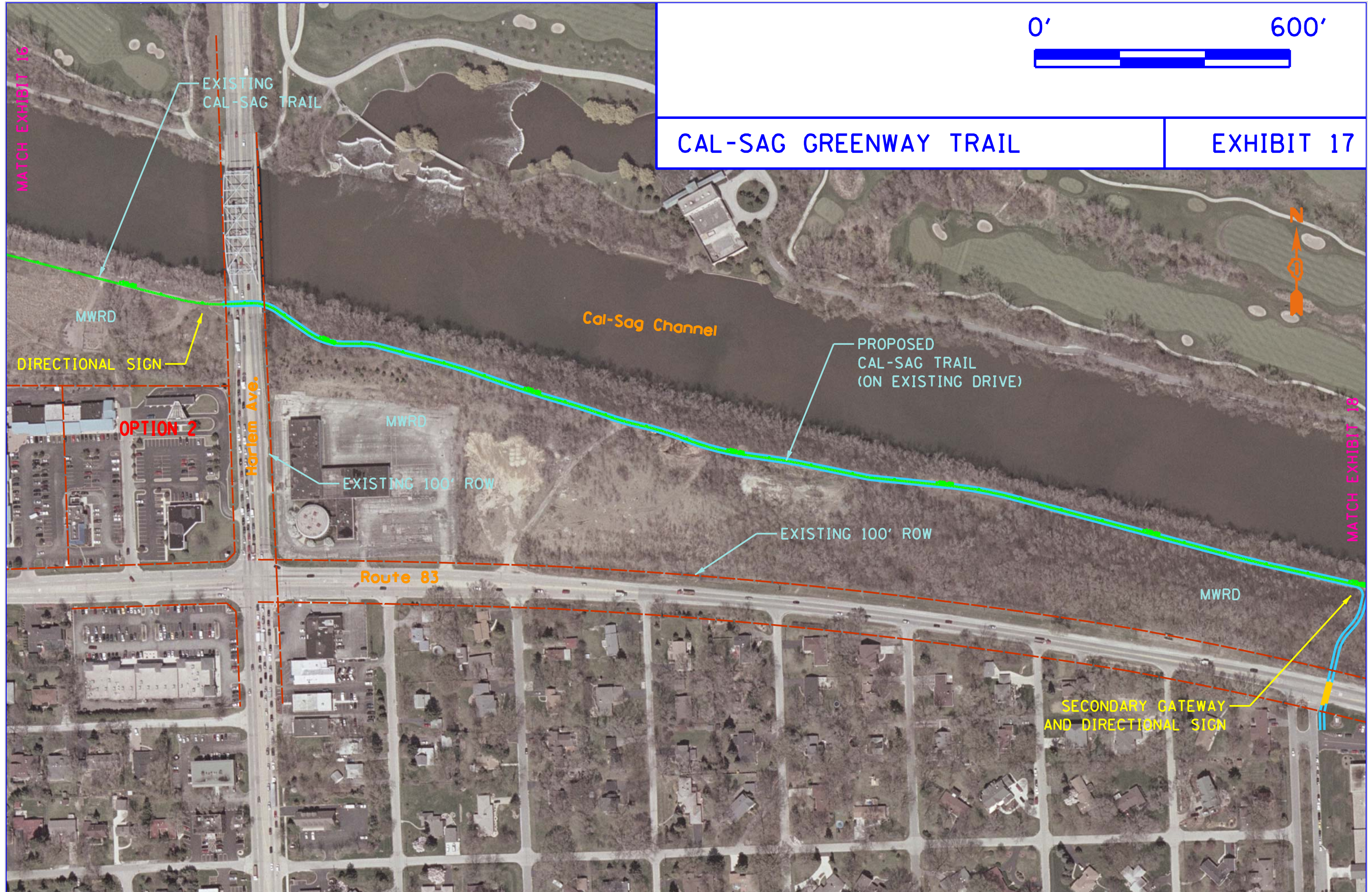
# EXHIBIT 16

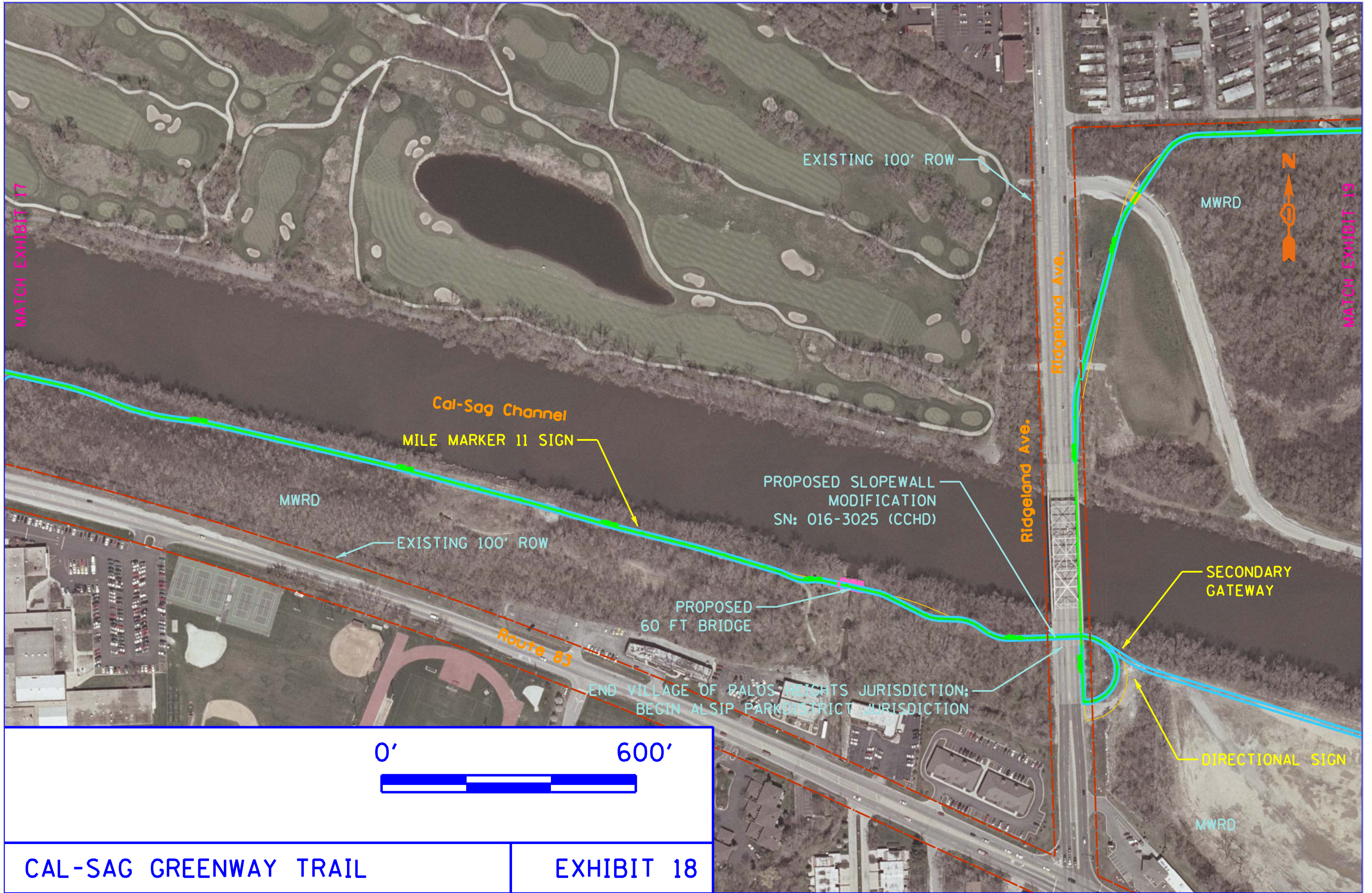






CAL-SAG GREENWAY TRAIL EXHIBIT 17





CAL-SAG GREENWAY TRAIL

EXHIBIT 18

LEGEND

ON-STREET ROUTE

OFF-STREET TRAIL

ENVIRONMENTAL SURVEY LIMITS

0'

600'



CAL-SAG GREENWAY TRAIL

EXHIBIT 19

Cal-Sag Channel

MATCH EXHIBIT 18

MATCH EXHIBIT 20

CURRENT CAL-SAG TRAIL (WEST) ALIGNMENT  
(TO BE ABANDONED)

NEW CAL-SAG TRAIL (WEST)  
ALIGNMENT CONSTRUCTED  
BY TRINITY COLLEGE

NEW CAL-SAG TRAIL (WEST)  
ALIGNMENT TO BE CONSTRUCTED  
BY TRINITY COLLEGE

MILE MARKER 12 SIGN

DIRECTIONAL SIGN

NEW CAL-SAG TRAIL (WEST)  
ALIGNMENT TO BE CONSTRUCTED  
BY PARK DISTRICT

Route 83

Cal-Sag Channel

Route 83

LEGEND

ON-STREET ROUTE

OFF-STREET TRAIL

ENVIRONMENTAL SURVEY LIMITS

0'

600'



CAL-SAG GREENWAY TRAIL

EXHIBIT 20

MATCH EXHIBIT 19

CURRENT CAL-SAG TRAIL (WEST) ALIGNMENT (TO BE ABANDONED)

CURRENT TERMINI FOR EAST AND WEST SEGMENTS OF CAL-SAG TRAIL (TO BE ABANDONED)

Route 83

Marina Drive

Tri-State Tollway

Cal-Sag Channel

CURRENT CAL-SAG TRAIL (EAST) ALIGNMENT (TO BE ABANDONED)

NEW CAL-SAG TRAIL (WEST) ALIGNMENT TO BE CONSTRUCTED BY PARK DISTRICT

MATCH EXHIBIT 21

LEGEND

- ON-STREET ROUTE
- OFF-STREET TRAIL
- ENVIRONMENTAL SURVEY LIMITS

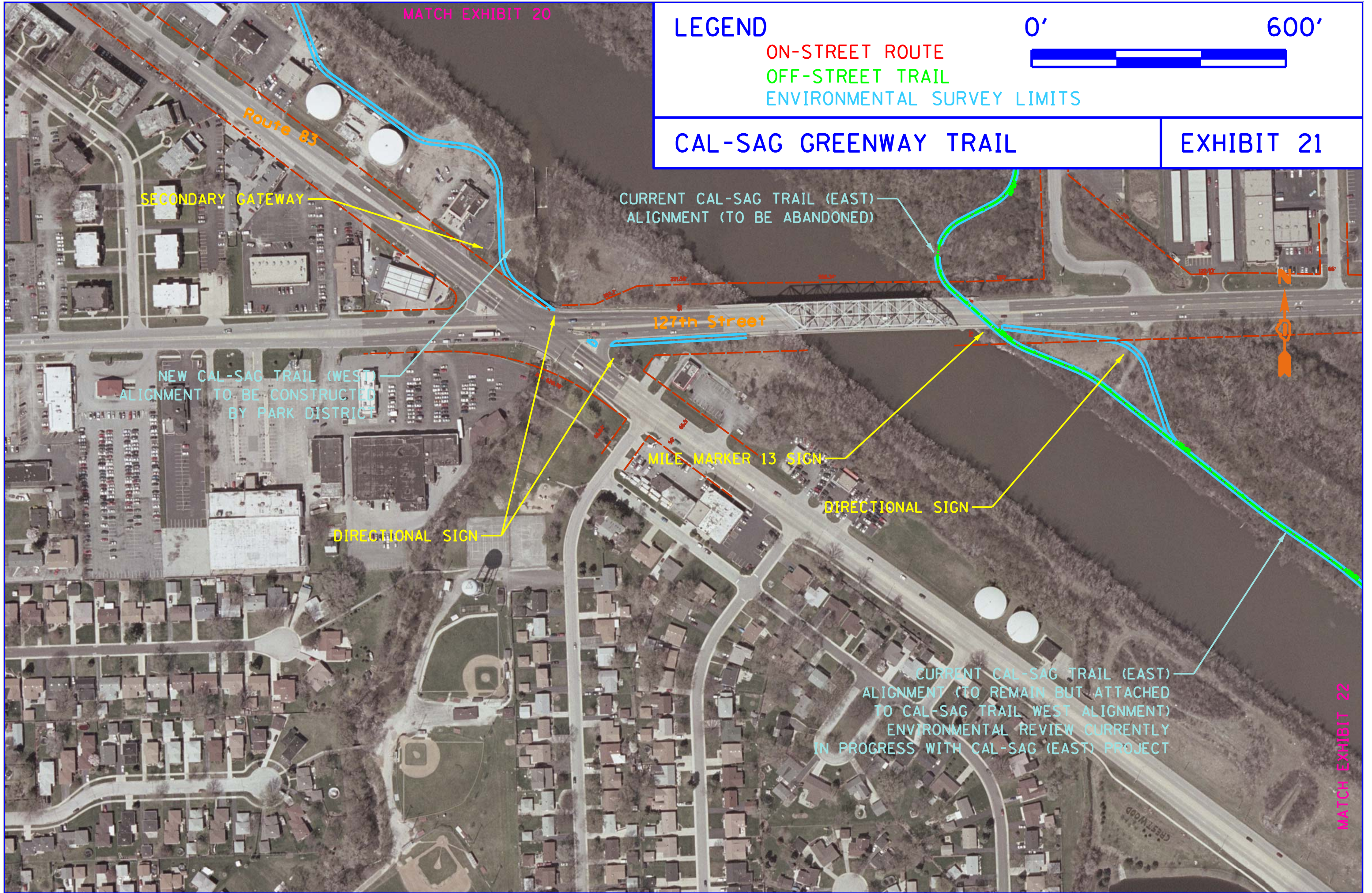
0'

600'



CAL-SAG GREENWAY TRAIL

EXHIBIT 21



LEGEND

ON-STREET ROUTE

OFF-STREET TRAIL

ENVIRONMENTAL SURVEY LIMITS

0'

600'



CAL-SAG GREENWAY TRAIL

EXHIBIT 22

MATCH EXHIBIT 21



Cicero Avenue

CURRENT CAL-SAG TRAIL (EAST) ALIGNMENT (TO REMAIN BUT ATTACHED TO CAL-SAG TRAIL WEST ALIGNMENT) ENVIRONMENTAL REVIEW CURRENTLY IN PROGRESS WITH CAL-SAG (EAST) PROJECT

NEW TERMINI FOR CAL-SAG TRAIL (EAST AND WEST) ALIGNMENTS

CURRENT CAL-SAG TRAIL (EAST) ALIGNMENT (TO REMAIN)