



MATCH EXHIBIT 2

MATCH EXHIBIT 24

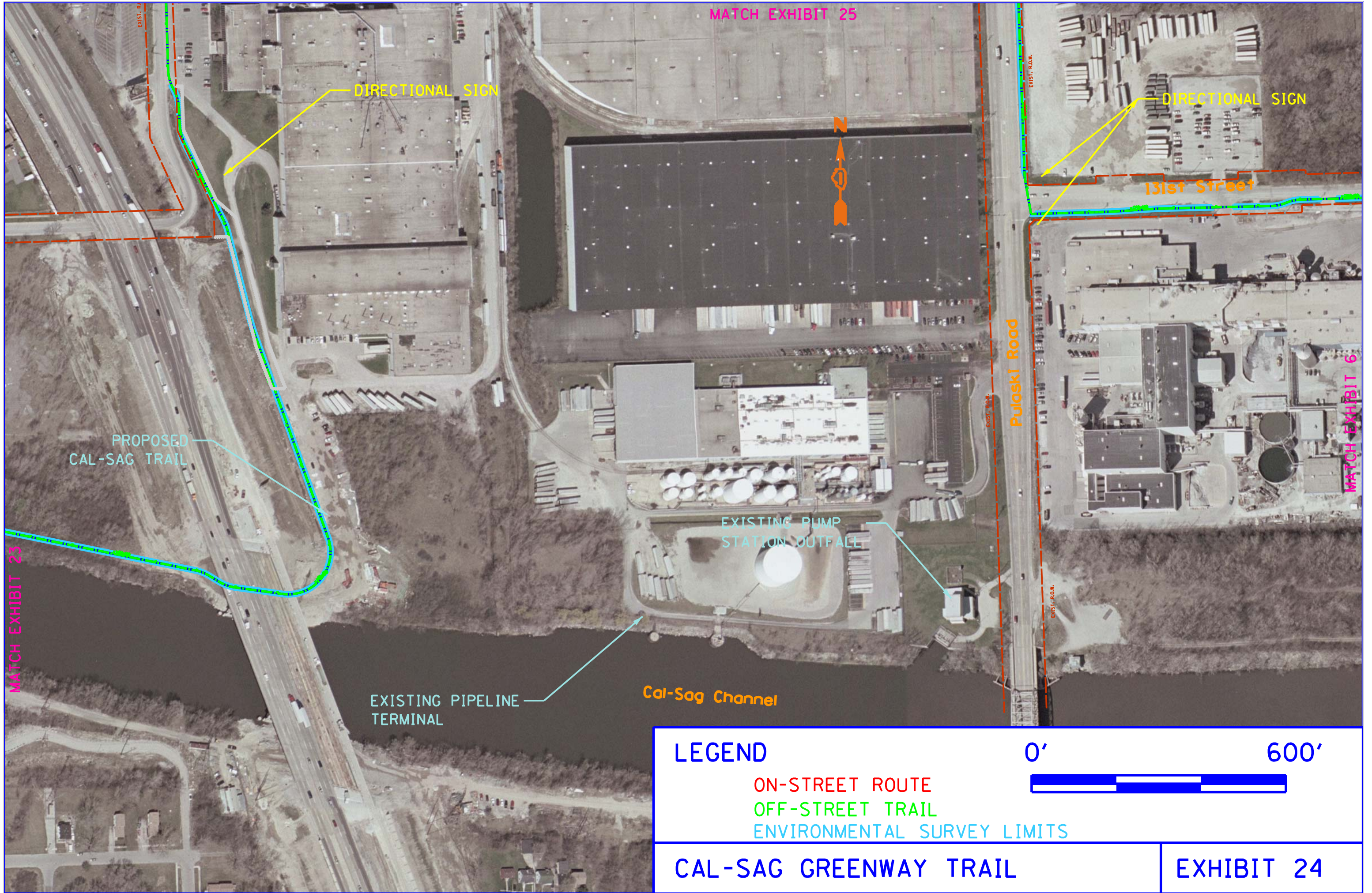
LEGEND

- ON-STREET ROUTE
- OFF-STREET TRAIL
- ENVIRONMENTAL SURVEY LIMITS



CAL-SAG GREENWAY TRAIL

EXHIBIT 23



MATCH EXHIBIT 23

MATCH EXHIBIT 6

DIRECTIONAL SIGN

DIRECTIONAL SIGN

131st Street

Puloski Road

PROPOSED CAL-SAG TRAIL

EXISTING PUMP STATION OUTFALL

EXISTING PIPELINE TERMINAL

Cal-Sag Channel

LEGEND

- ON-STREET ROUTE
- OFF-STREET TRAIL
- ENVIRONMENTAL SURVEY LIMITS

0' 600'

D9151708-Exhibits_Wayfinding.dgn 9/17/2012 11:46:42 AM

LEGEND

- ON-STREET ROUTE
- OFF-STREET TRAIL
- ENVIRONMENTAL SURVEY LIMITS

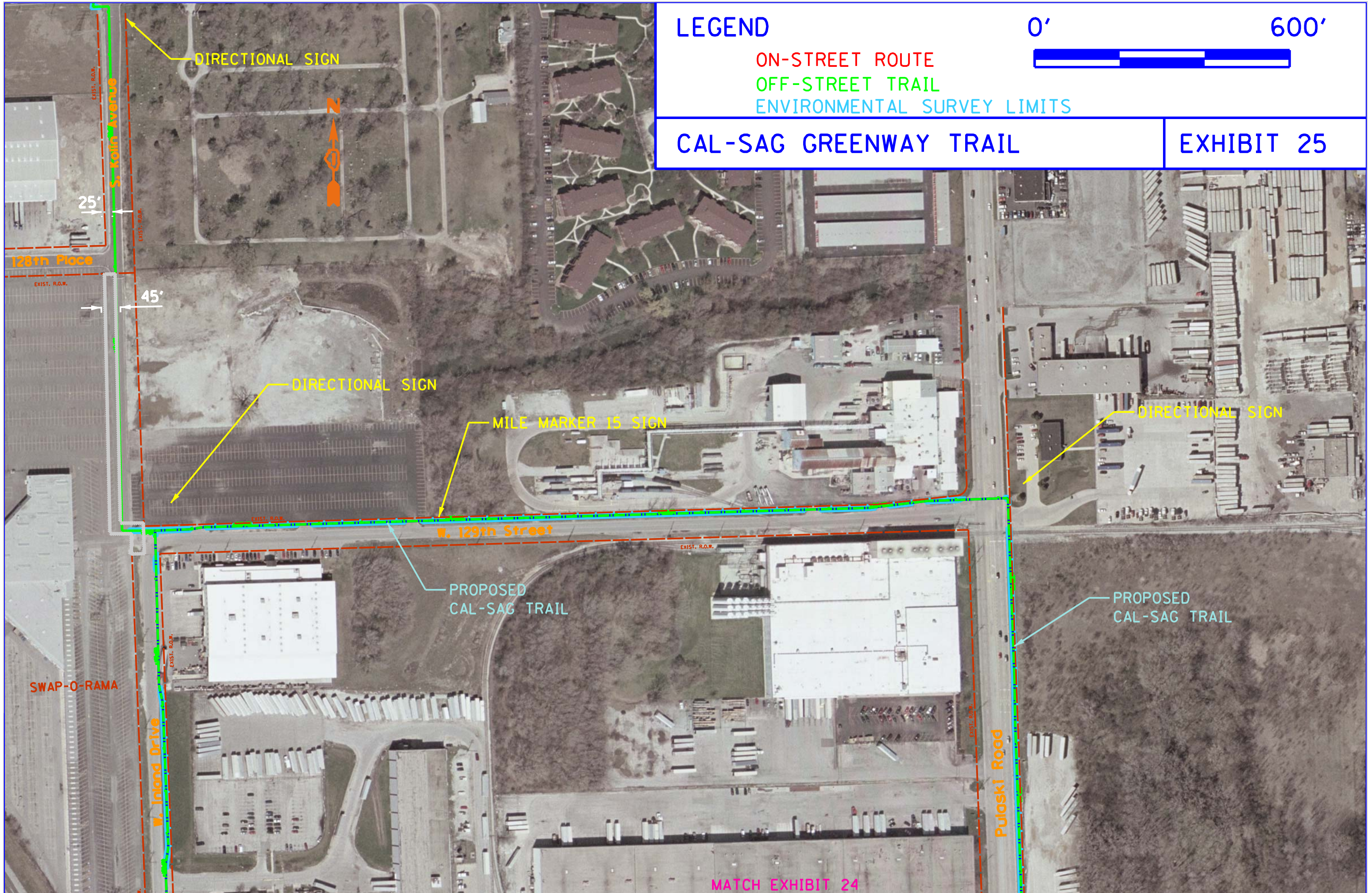
0'

600'



CAL-SAG GREENWAY TRAIL

EXHIBIT 25



LEGEND

ON-STREET ROUTE

OFF-STREET TRAIL

ENVIRONMENTAL SURVEY LIMITS

0' 600'



CAL-SAG GREENWAY TRAIL

EXHIBIT 26



131st Street

PROPOSED CAL-SAG TRAIL

MILE MARKER 16 SIGN

DIRECTIONAL SIGN

Cal-Sag Channel

Homan Avenue

Homan Avenue

MATCH EXHIBIT 24

MATCH EXHIBIT 27

LEGEND

0'

600'

ON-STREET ROUTE

OFF-STREET TRAIL

ENVIRONMENTAL SURVEY LIMITS



CAL-SAG GREENWAY TRAIL

EXHIBIT 27

END ALSIP JURISDICTION;
BEGIN WORTH TOWNSHIP JURISDICTION

SECONDARY GATEWAY

Kedzie Avenue

131st Street

PROPOSED
CAL-SAG TRAIL

131st Place

Brayton Avenue

Sacramento Avenue

Sheridan Avenue

132nd Street

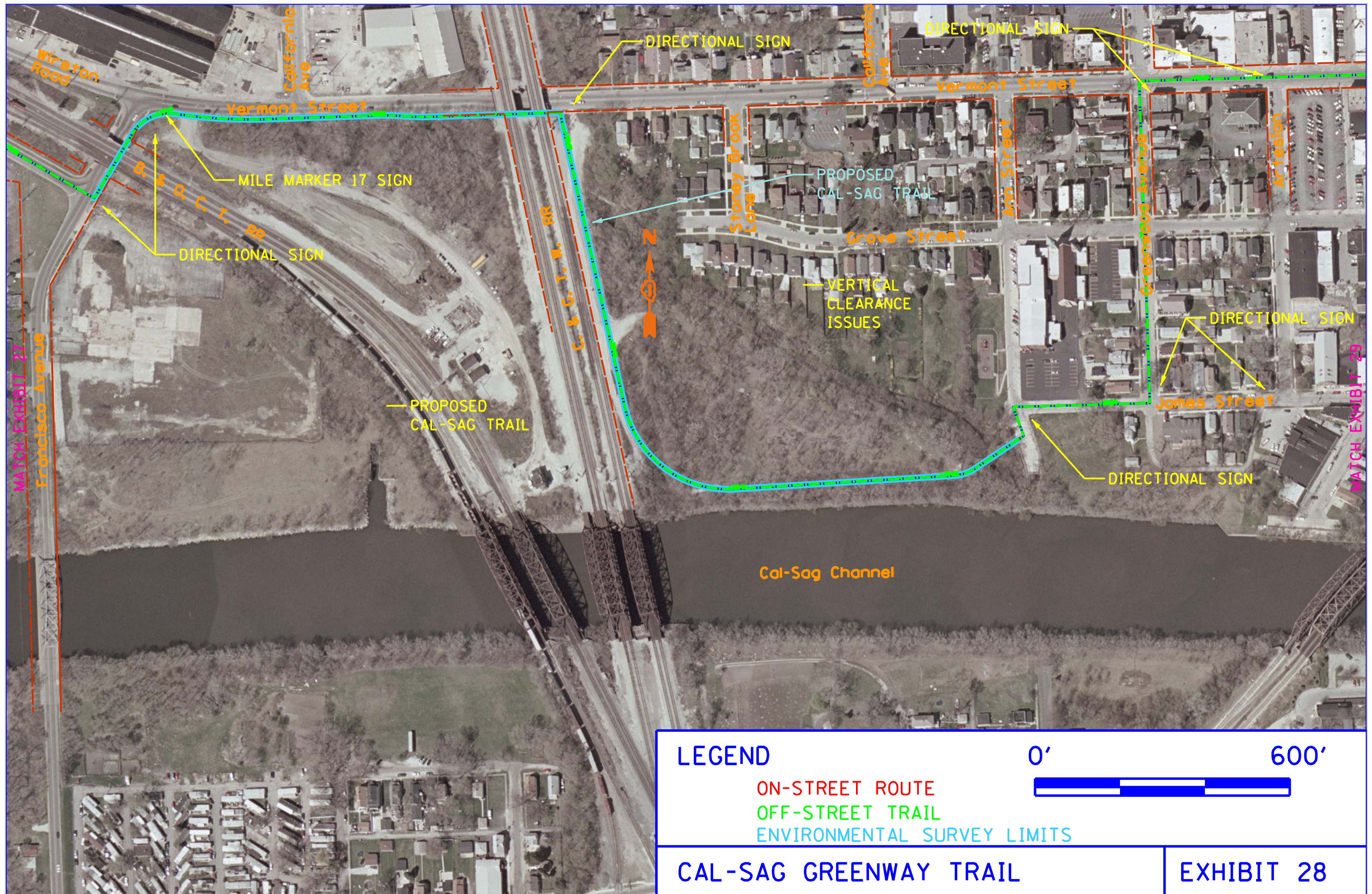
Cal-Sag Channel

DIRECTIONAL SIGN

N

MATCH EXHIBIT 26

MATCH EXHIBIT 28



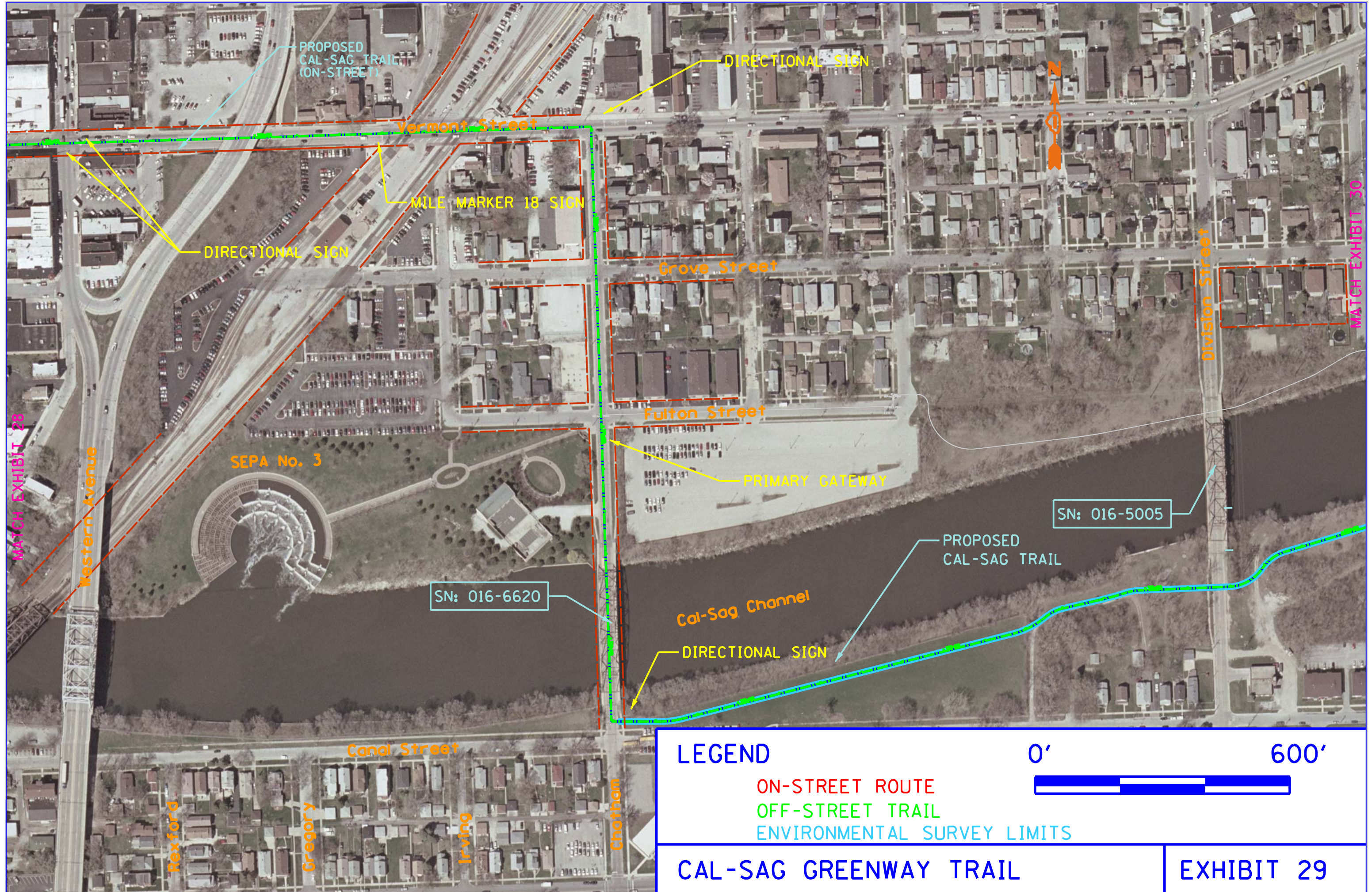
LEGEND

- ON-STREET ROUTE
- OFF-STREET TRAIL
- ENVIRONMENTAL SURVEY LIMITS



CAL-SAG GREENWAY TRAIL

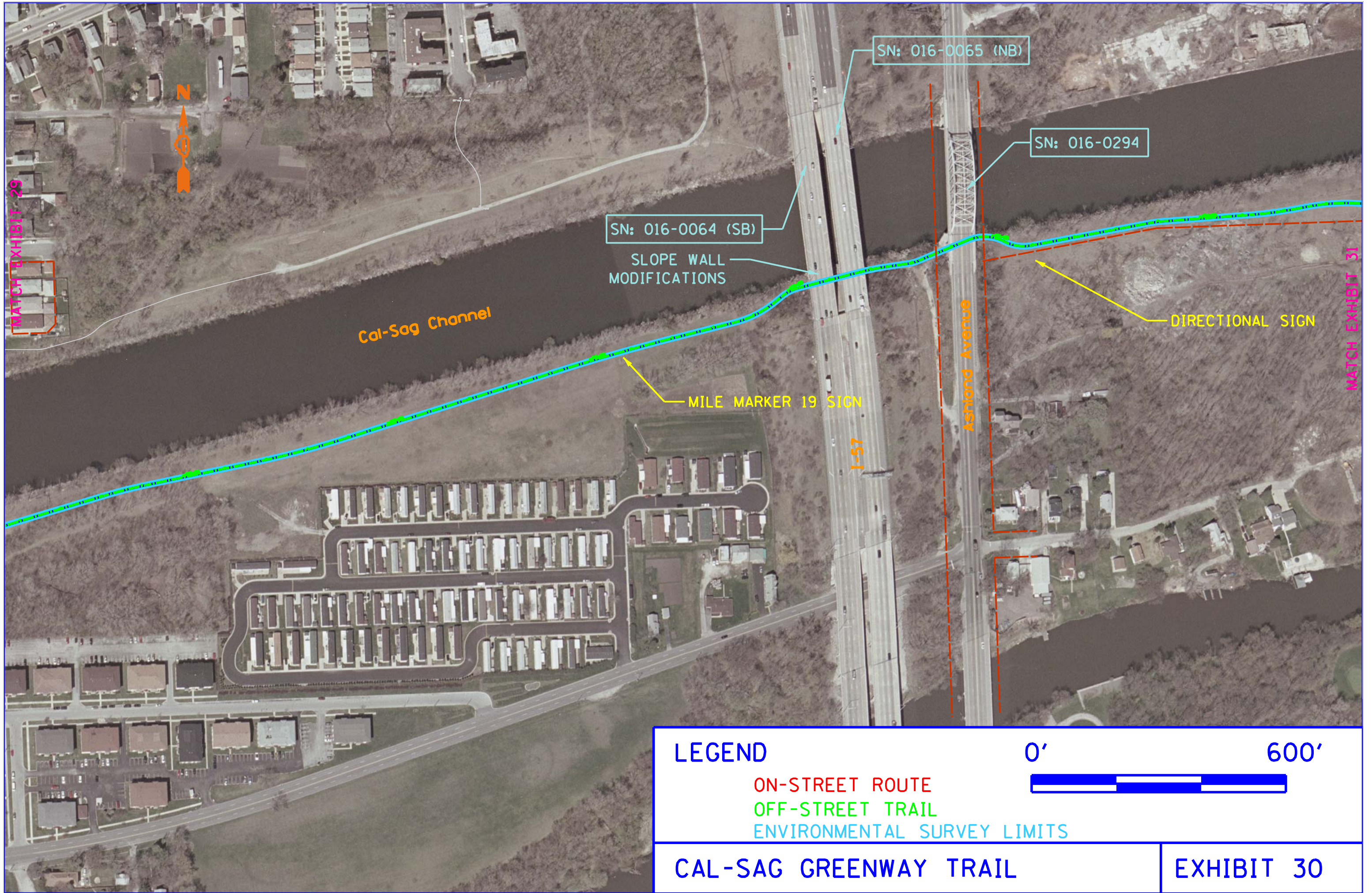
EXHIBIT 28



MATCH EXHIBIT 28

MATCH EXHIBIT 30

LEGEND ON-STREET ROUTE OFF-STREET TRAIL ENVIRONMENTAL SURVEY LIMITS	0' 600'	
	<table border="1" style="width: 100%;"> <tr> <td style="text-align: center;">CAL-SAG GREENWAY TRAIL</td> <td style="text-align: center;">EXHIBIT 29</td> </tr> </table>	CAL-SAG GREENWAY TRAIL
CAL-SAG GREENWAY TRAIL	EXHIBIT 29	



MATCH EXHIBIT 29

MATCH EXHIBIT 31



Cal-Sag Channel

I-57

Ashland Avenue

SN: 016-0064 (SB)


SN: 016-0065 (NB)

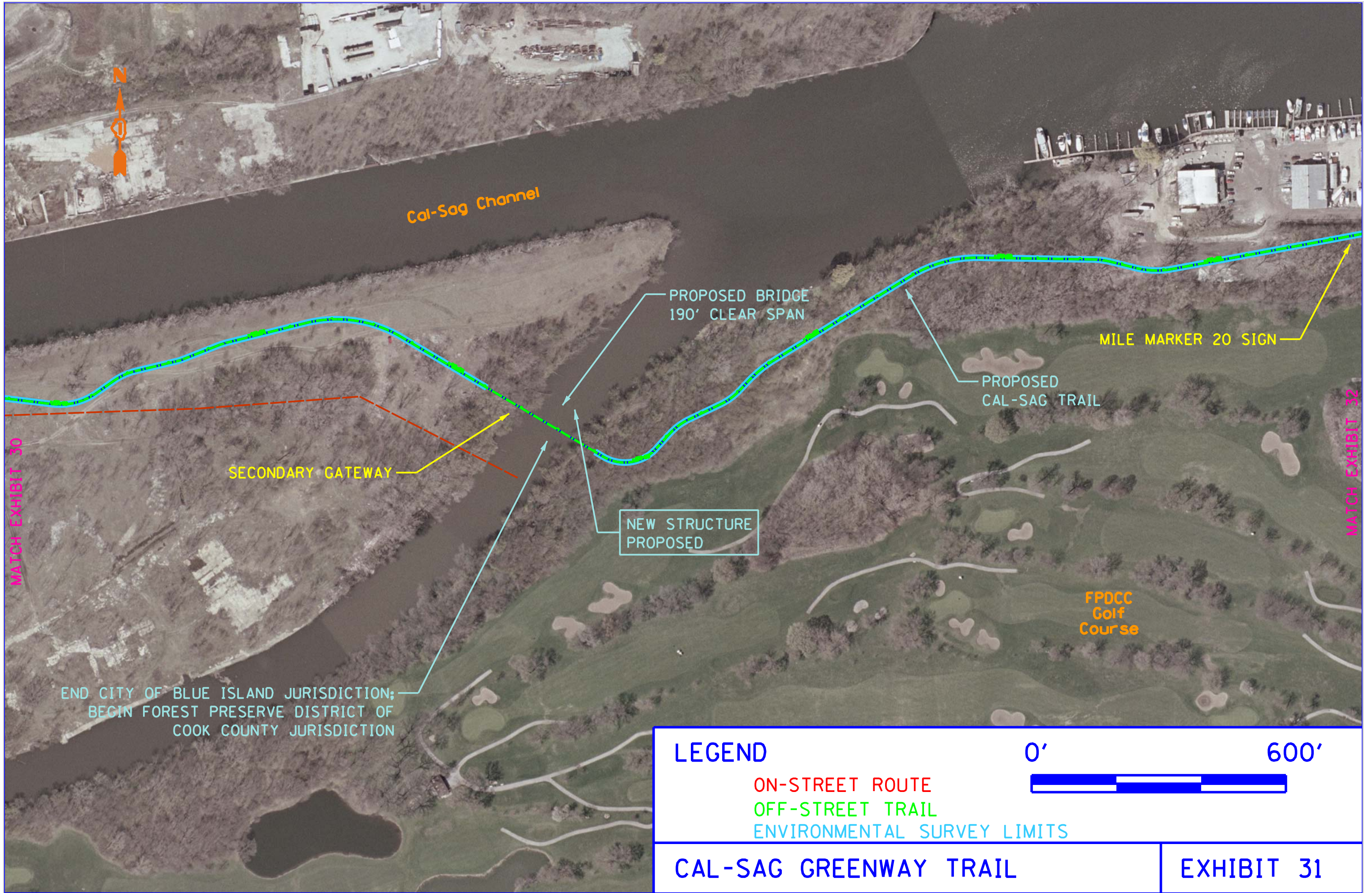
SN: 016-0294

SLOPE WALL
MODIFICATIONS

MILE MARKER 19 SIGN

DIRECTIONAL SIGN

LEGEND	ON-STREET ROUTE	0'  600'
	OFF-STREET TRAIL	
ENVIRONMENTAL SURVEY LIMITS		
CAL-SAG GREENWAY TRAIL		EXHIBIT 30





Little Calumet River

DIRECTIONAL SIGN

MAJOR TAYLOR TRAIL

PROPOSED CAL-SAG TRAIL

10'

Halsted Street

Whistler Preserve

10'

MATCH EXHIBIT 31

MATCH EXHIBIT 33

LEGEND ON-STREET ROUTE OFF-STREET TRAIL ENVIRONMENTAL SURVEY LIMITS	0'	600'

D9151708-Exhibits_Wayfinding.dgn 9/17/2012 11:50:58 AM

MATCH EXHIBIT 32

Jackson Street/134th Street

DIRECTIONAL SIGN

Forestview Drive/Acme Drive

DIRECTIONAL SIGN

SECONDARY GATEWAY



80'

30'

99'

Holsted Street

END FOREST PRESERVE DISTRICT OF COOK COUNTY JURISDICTION; BEGIN VILLAGE OF RIVERDALE JURISDICTION

SN: 016-0194

Industrial Drive

Blue Island-Riverdale Road

Industrial Drive

LEGEND

ON-STREET ROUTE

OFF-STREET TRAIL

ENVIRONMENTAL SURVEY LIMITS

0'

600'



CAL-SAG GREENWAY TRAIL

EXHIBIT 33

MATCH EXHIBIT 34

MATCH EXHIBIT 16



DIRECTIONAL SIGN

MILE MARKER 21 SIGN

130'
15'
15'

Emerald

Union Avenue

Walloce Avenue

138th Street

138th Street

DIRECTIONAL SIGN

PROPOSED
CAL-SAG TRAIL
(BIKE LANES)

Hoisted Street

66'

LEGEND

ON-STREET ROUTE

OFF-STREET TRAIL

ENVIRONMENTAL SURVEY LIMITS

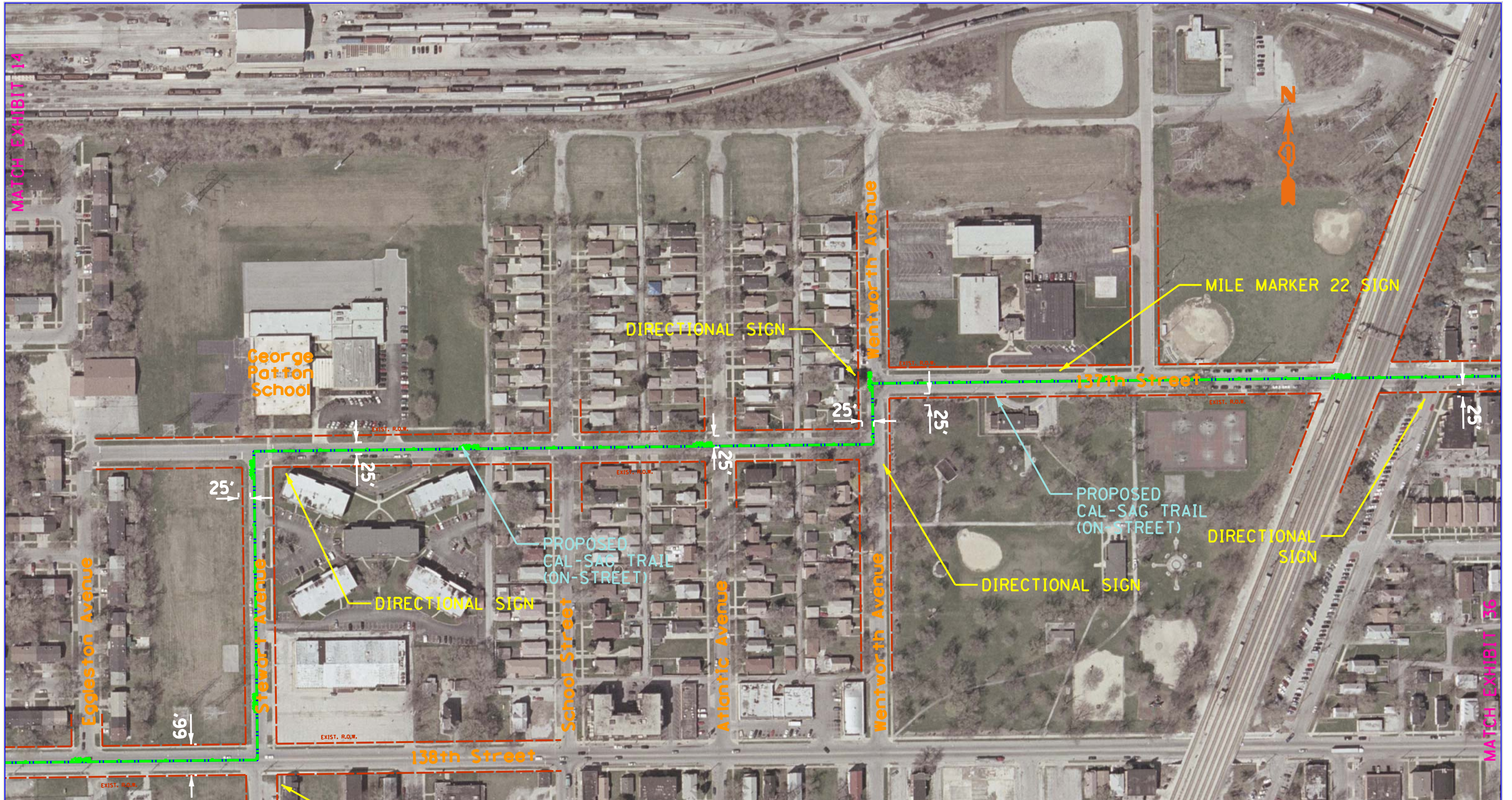
0'

600'



CAL-SAG GREENWAY TRAIL

EXHIBIT 34



MATCH EXHIBIT 14

MATCH EXHIBIT 34

MATCH EXHIBIT 36

LEGEND

- ON-STREET ROUTE
- OFF-STREET TRAIL
- ENVIRONMENTAL SURVEY LIMITS



CAL-SAG GREENWAY TRAIL

EXHIBIT 35

LEGEND

ON-STREET ROUTE

OFF-STREET TRAIL

ENVIRONMENTAL SURVEY LIMITS

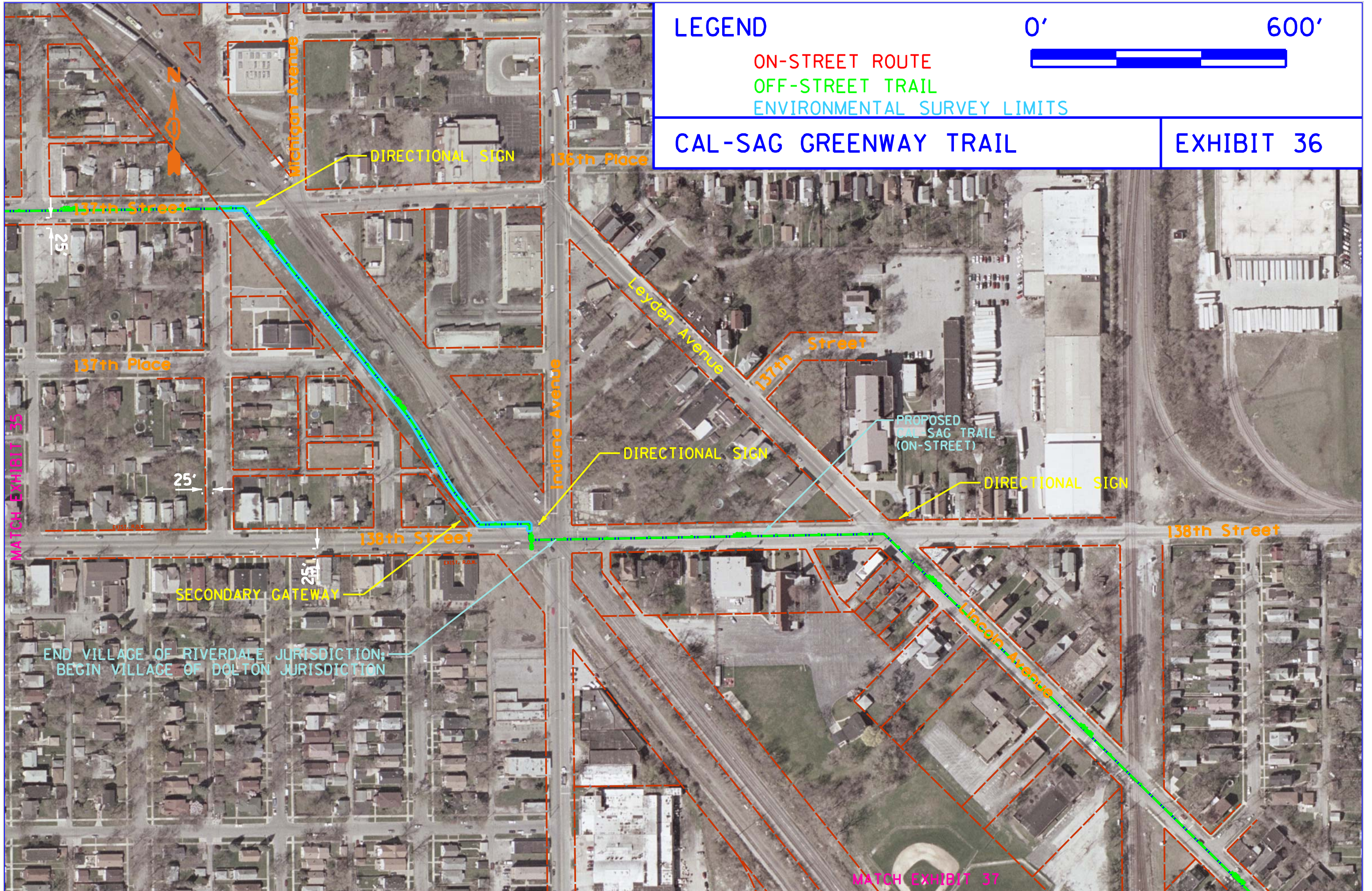
0'

600'



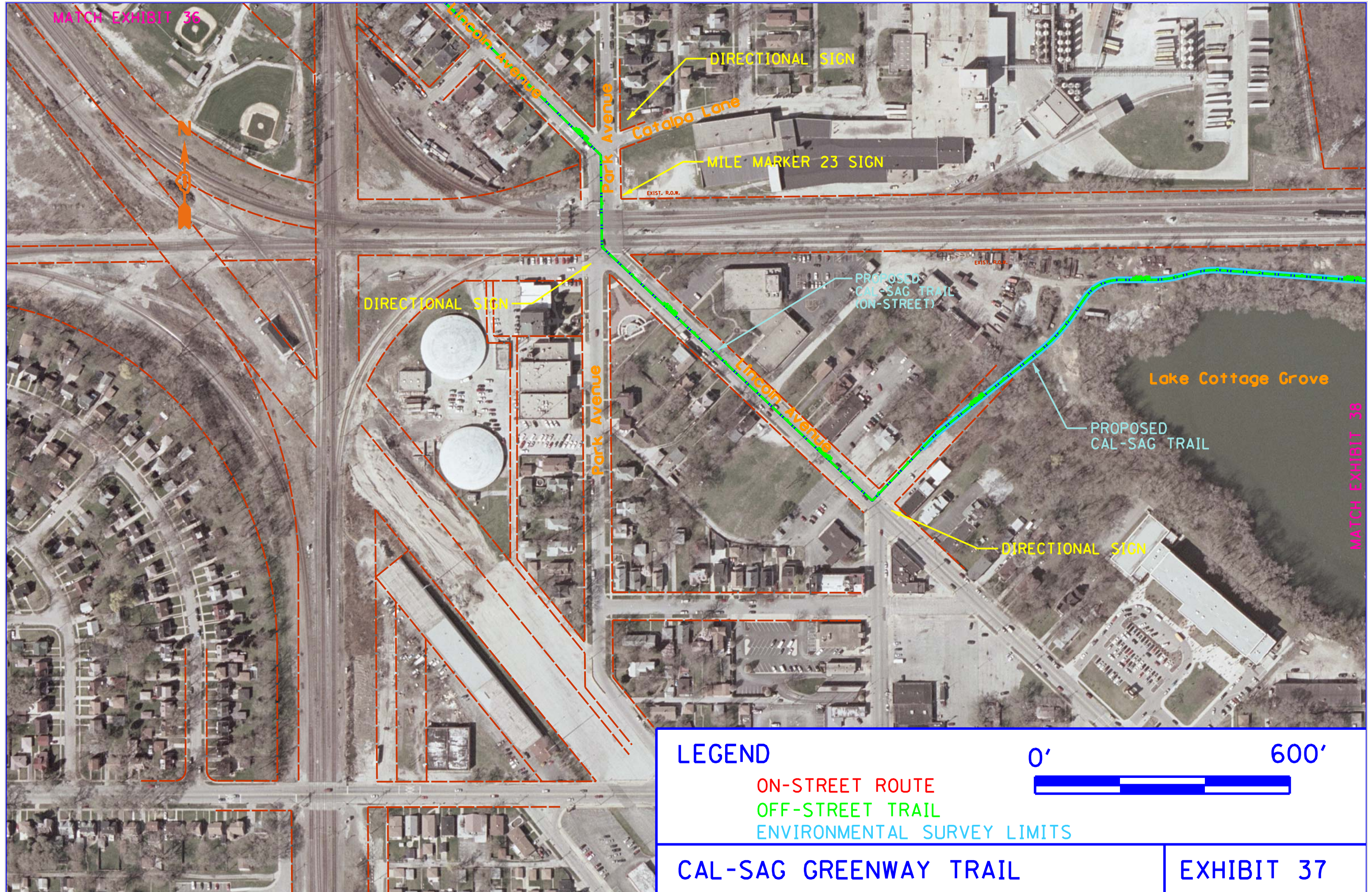
CAL-SAG GREENWAY TRAIL

EXHIBIT 36



MATCH EXHIBIT 35

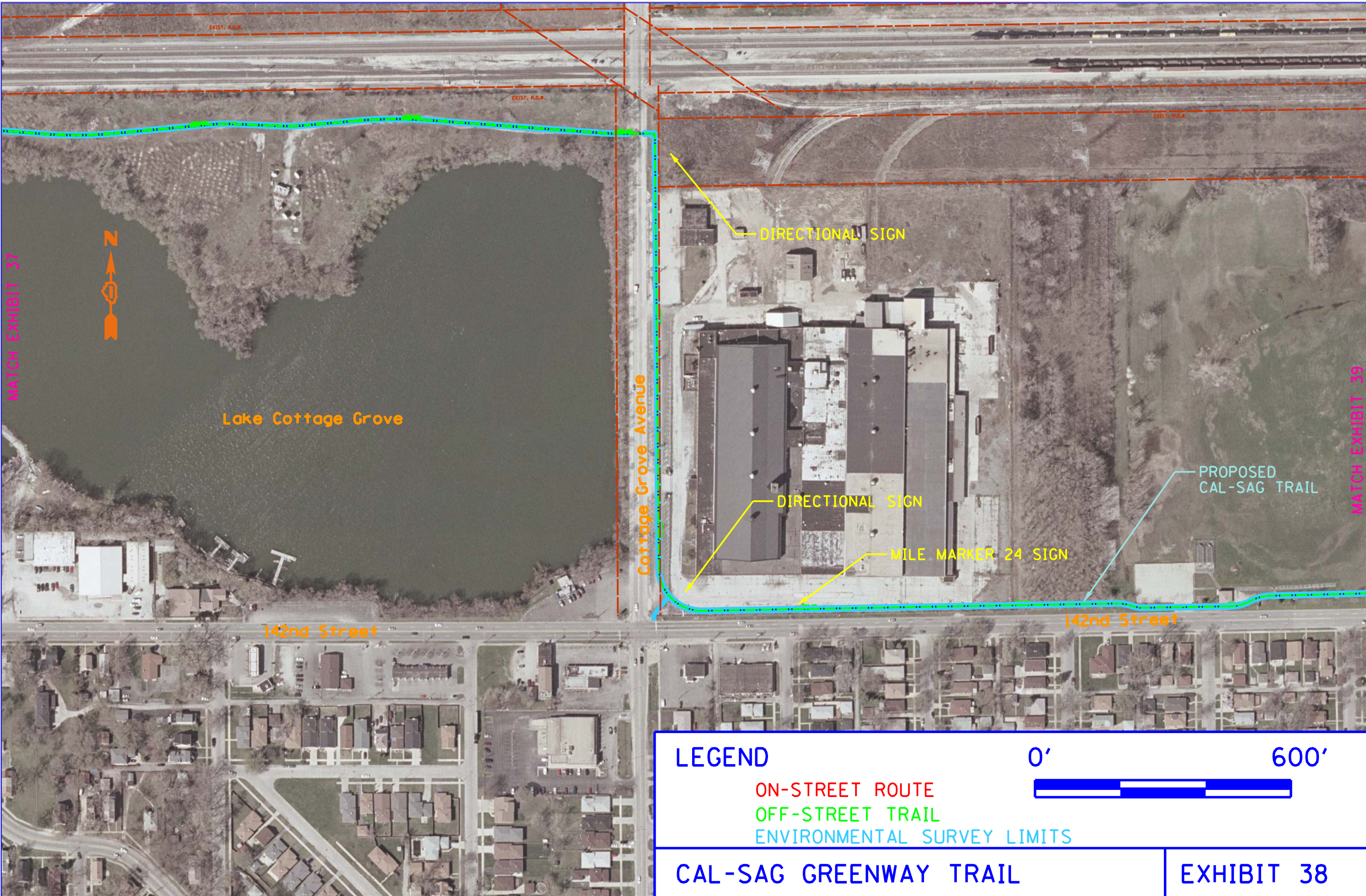
MATCH EXHIBIT 37



LEGEND	ON-STREET ROUTE	0'	600'
	OFF-STREET TRAIL		
	ENVIRONMENTAL SURVEY LIMITS		

MATCH EXHIBIT 37

MATCH EXHIBIT 39



LEGEND	0'	600'
	ON-STREET ROUTE	
	OFF-STREET TRAIL	
	ENVIRONMENTAL SURVEY LIMITS	



MATCH EXHIBIT 38

MATCH EXHIBIT 40

142nd Street

PRIMARY GATEWAY

DIRECTIONAL SIGN

PROPOSED CAL-SAG TRAIL

LEGEND

ON-STREET ROUTE

OFF-STREET TRAIL

ENVIRONMENTAL SURVEY LIMITS

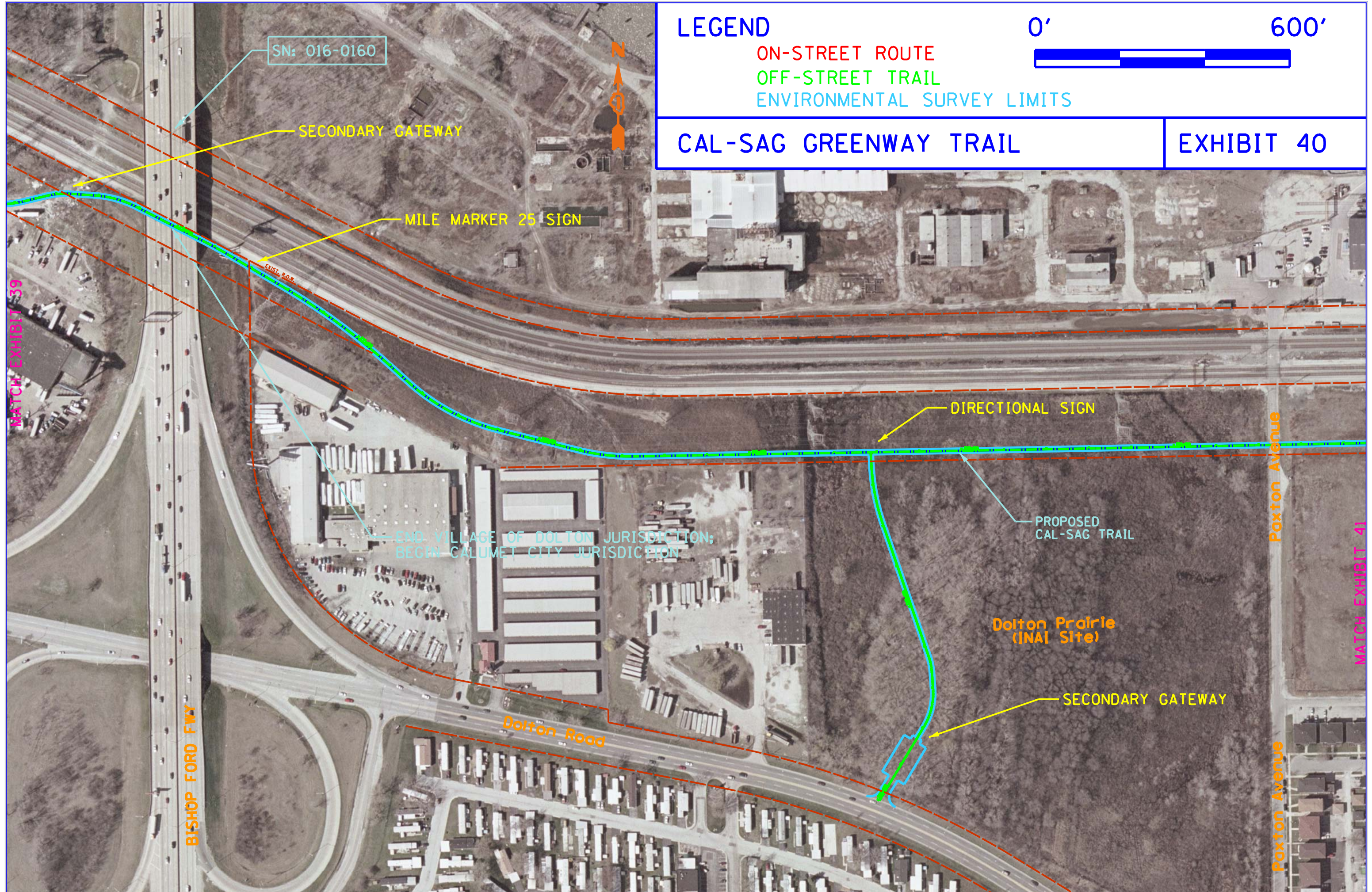
0'



600'

CAL-SAG GREENWAY TRAIL

EXHIBIT 39



LEGEND

- ON-STREET ROUTE
- OFF-STREET TRAIL
- ENVIRONMENTAL SURVEY LIMITS

0' 600'



CAL-SAG GREENWAY TRAIL

EXHIBIT 40

SN: 016-0160

SECONDARY GATEWAY

MILE MARKER 25 SIGN

EXIST. R.O.B.

DIRECTIONAL SIGN

PROPOSED CAL-SAG TRAIL

END VILLAGE OF DOLTON JURISDICTION;
BEGIN CALUMET CITY JURISDICTION

Dolton Prairie
(INAI Site)

SECONDARY GATEWAY

Dolton Road

BISHOP FORD FWY

Paxton Avenue

Paxton Avenue

MATCH EXHIBIT 39

MATCH EXHIBIT 41

END CALUMET CITY JURISDICTION;
BEGIN VILLAGE OF BURNHAM JURISDICTION

LEGEND

- ON-STREET ROUTE
- OFF-STREET TRAIL
- ENVIRONMENTAL SURVEY LIMITS

0' 600'



CAL-SAG GREENWAY TRAIL

EXHIBIT 41



DIRECTIONAL SIGN

SECONDARY GATEWAY

Burnham
Retention Basin

PROPOSED
CAL-SAG TRAIL

143rd
Street

Bensley Avenue

PRIMARY
GATEWAY

Colhoun Avenue

MILE MARKER 26 SIGN

DIRECTIONAL SIGN

Harbor Avenue

E 144th Street

Kettelson Street

PROPOSED
CAL-SAG TRAIL
(ON-STREET)

Luella Avenue

Patricia Place

Oglesby Avenue

Yates Avenue

Bensley Avenue

Hoxie Avenue

Torrence Avenue

Downs Drive

E 145th Street

E 145th Street



LEGEND

ON-STREET ROUTE

OFF-STREET TRAIL

ENVIRONMENTAL SURVEY LIMITS

0' 600'